



Enlarged City School District

Budget 2020-21

Cortland Enlarged City School District

State aid formulas

- NYSED publishes a state aid handbook
- Describes 58 different school aid formulas
- The following account for more than 95% of state aid
- Foundation aid
- Building aid
- Transportation aid
- BOCES aid
- Public & private excess cost aids for special education

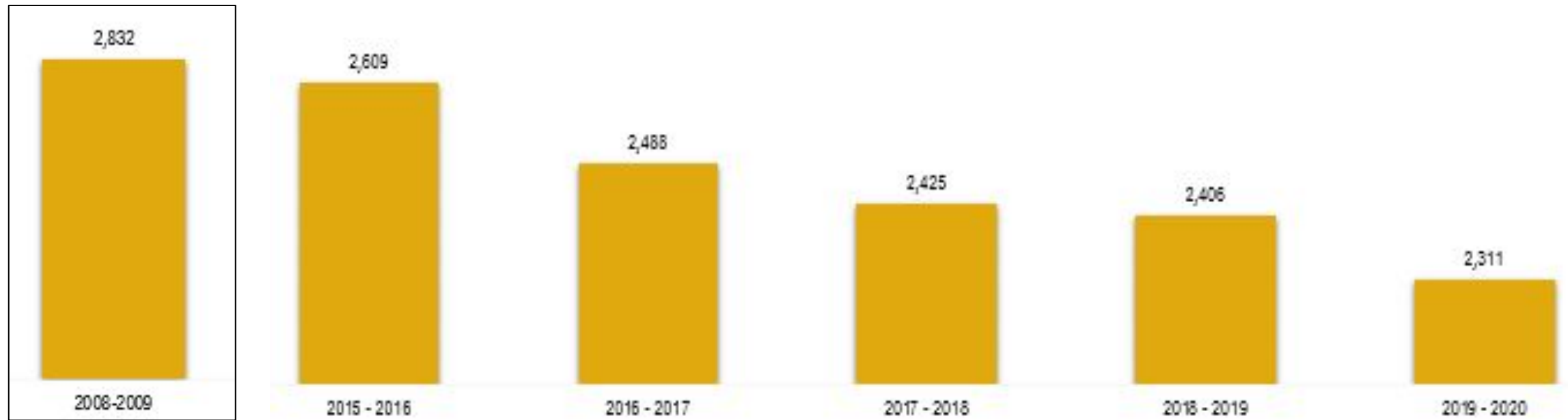
How aid is distributed

- Foundation formulas
- Expense-based formula
- Per pupil formula

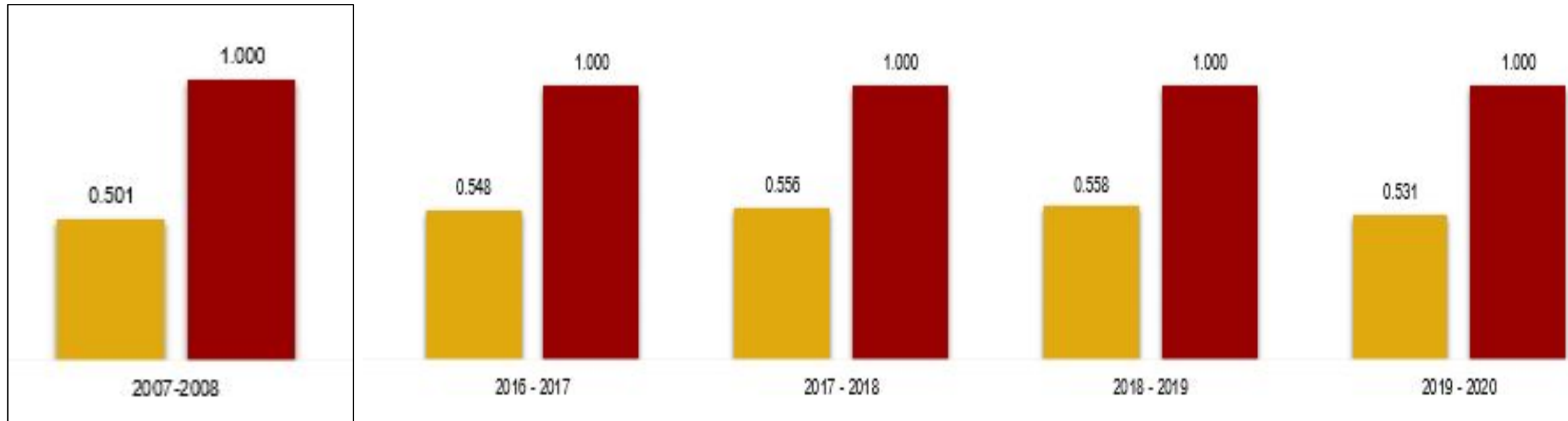
Factors that drive aid

- Income per pupil & actual value of taxable property per pupil
- Foundation aid uses an extraordinary needs count
- Textbooks, library, software, hardware
- Transportation, building and BOCES
- Special education (public high cost and private)
- Pupil counts are used extensively in foundation and special education aids
- Pupil counts are also a small part of transportation and building aids
- Income wealth index floor .65

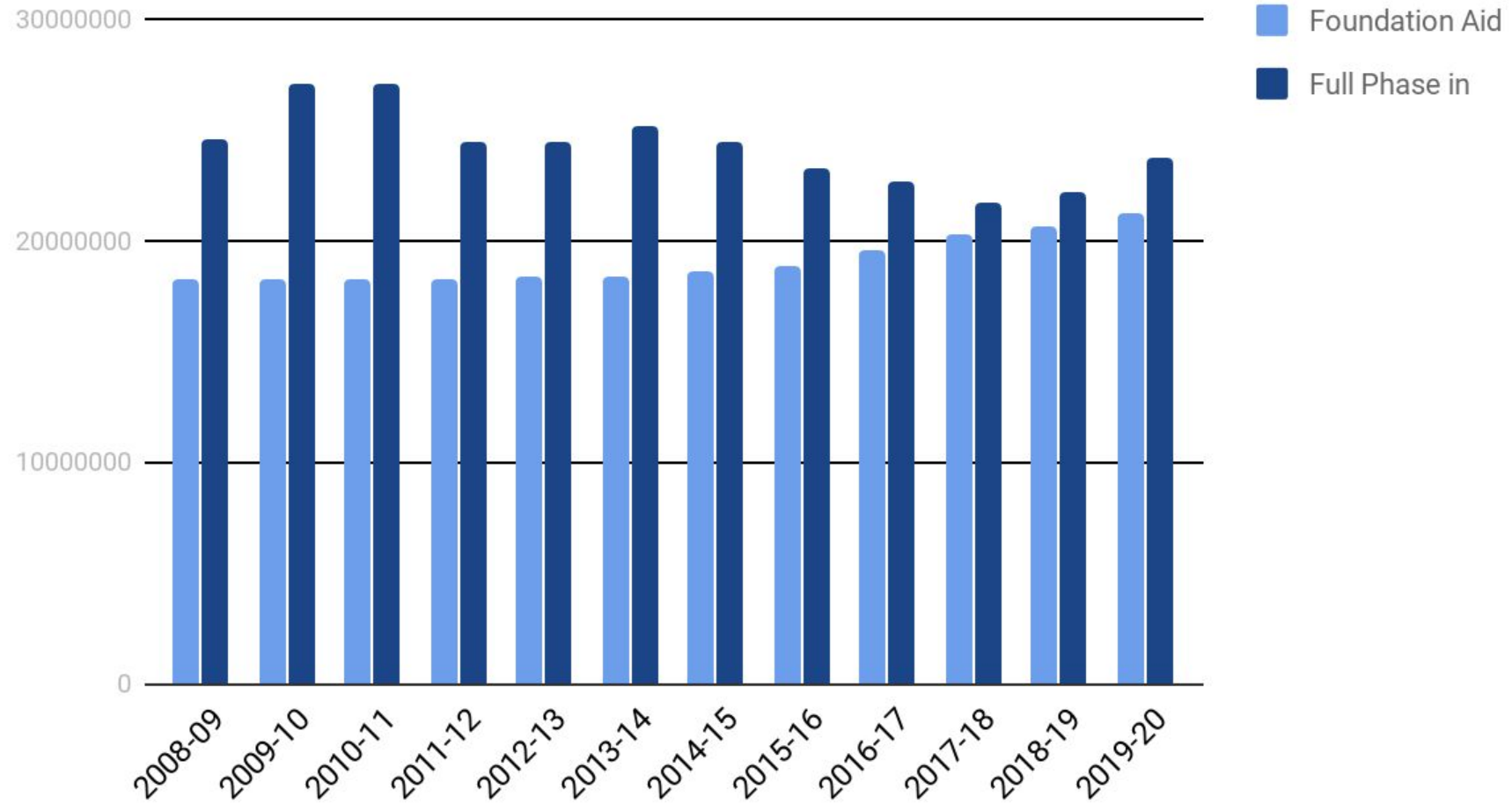
Student enrollment review

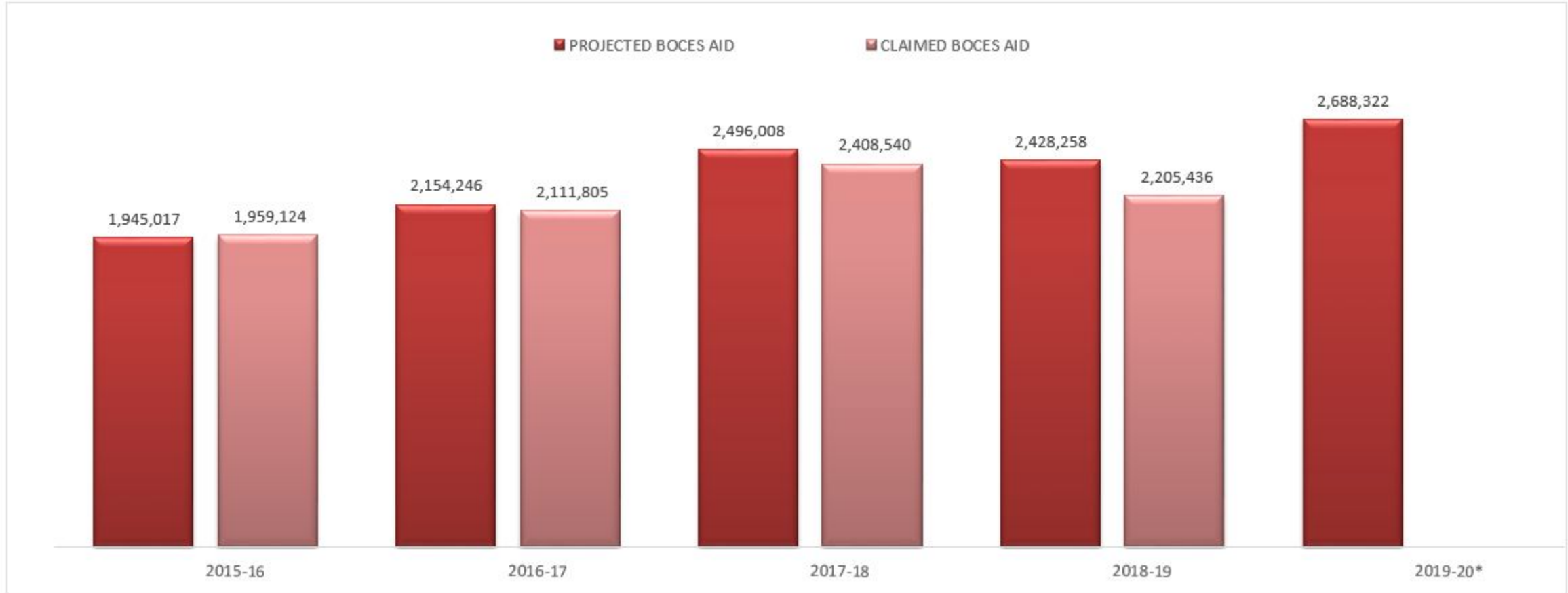


Combined wealth ratio

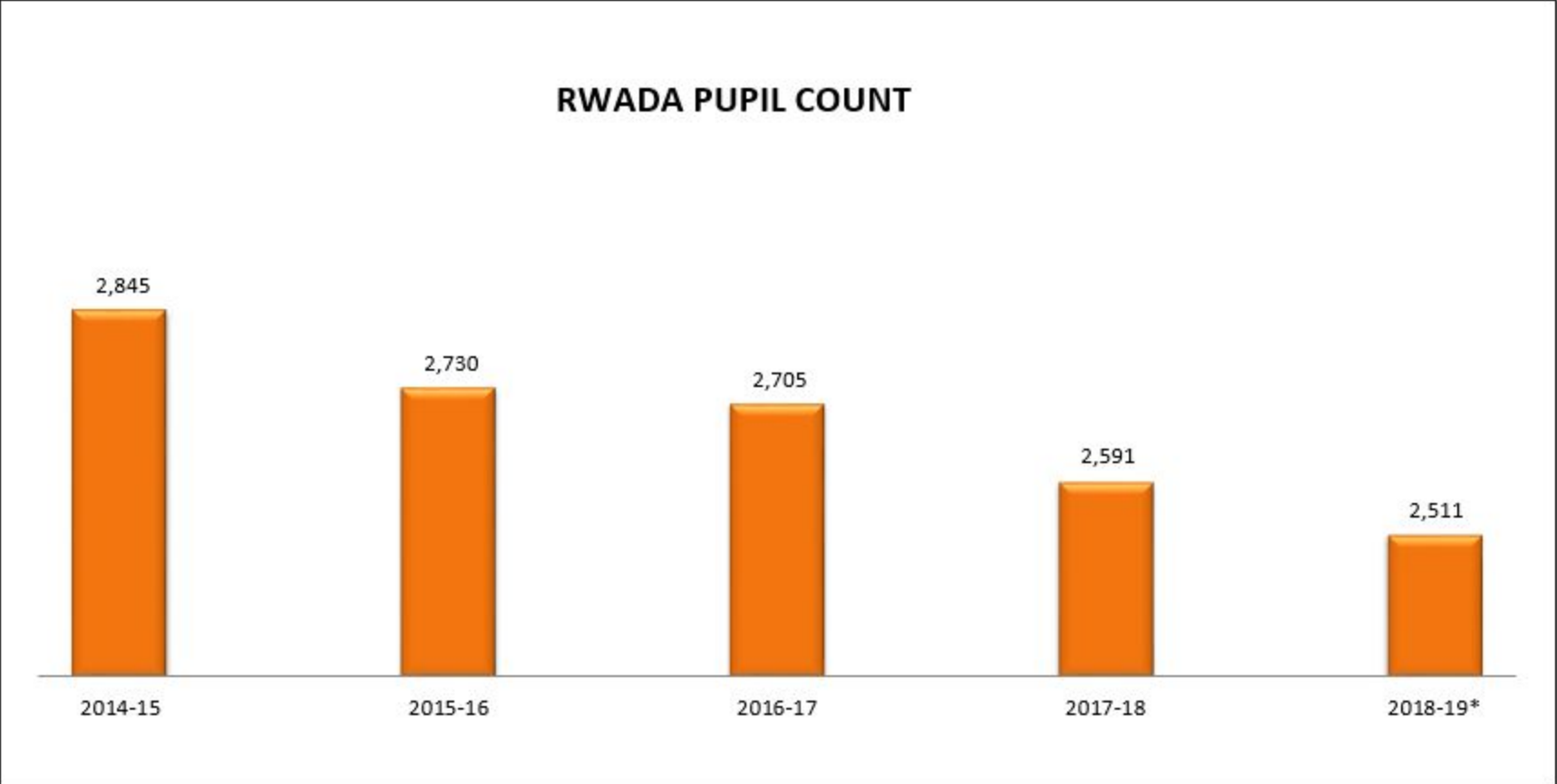


CECSD Foundation Aid





**2019-20 Data based on 2019-20 Enacted Budget (SA192-0) Dated 03/30/19*



**2018-19 Data based on 2018-19 Enacted Budget (SA181-9) Dated 04/03/18*

BOCES Aid Factors

CORTLAND

ENTER 6- DIGIT BEDS CODE HERE

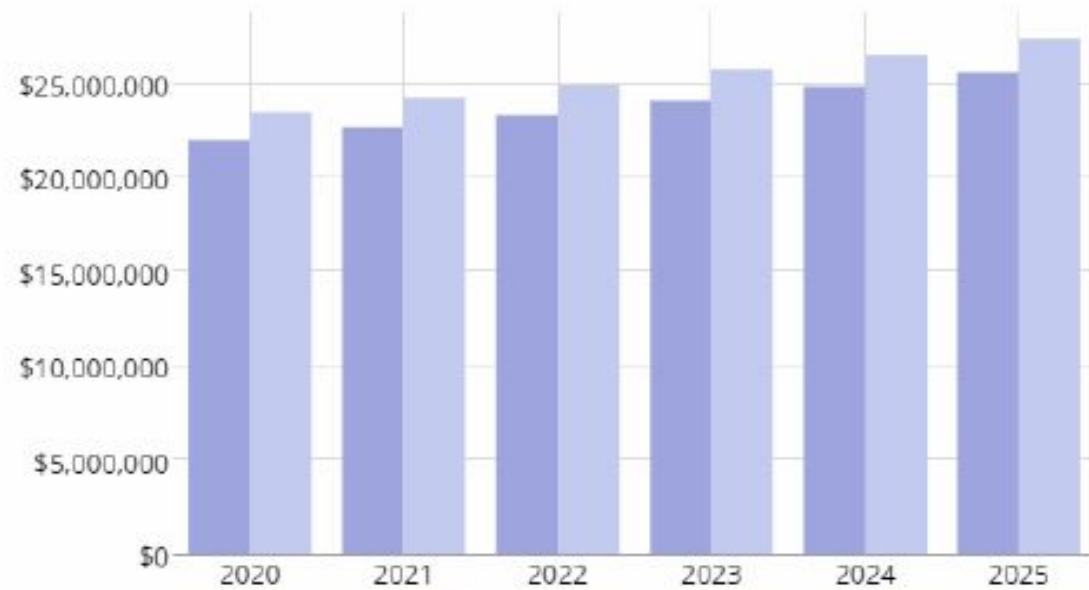
 **110200**

<i>(The maximum aid ratio for BOCES Aid is 90%)</i>	2015-16	2016-17	2017-18	2018-19	2019-20*
CURRENT AV/RWADA AID RATIO	74.9%	74.8%	74.4%	74.4%	76.1%
MILLAGE RATIO	55.9%	57.0%	57.0%	56.3%	56.3%
FACILITIES AID RATIO	74.9%	74.8%	74.4%	74.4%	76.1%
ADMIN/SERVICES AID RATIO	74.9%	74.8%	74.4%	74.4%	76.1%
RWADA PUPIL COUNT	2,730	2,705	2,591	2,511	2,551
FULL VALUE	\$918,623,236	\$913,702,422	\$916,407,247	\$931,324,412	\$938,886,041
FULL VALUE/RWADA	\$336,492	\$337,782	\$353,688	\$370,897	\$368,046
STATE AVERAGE FV/RWADA	\$680,400	\$681,700	\$702,400	\$738,000	\$782,900

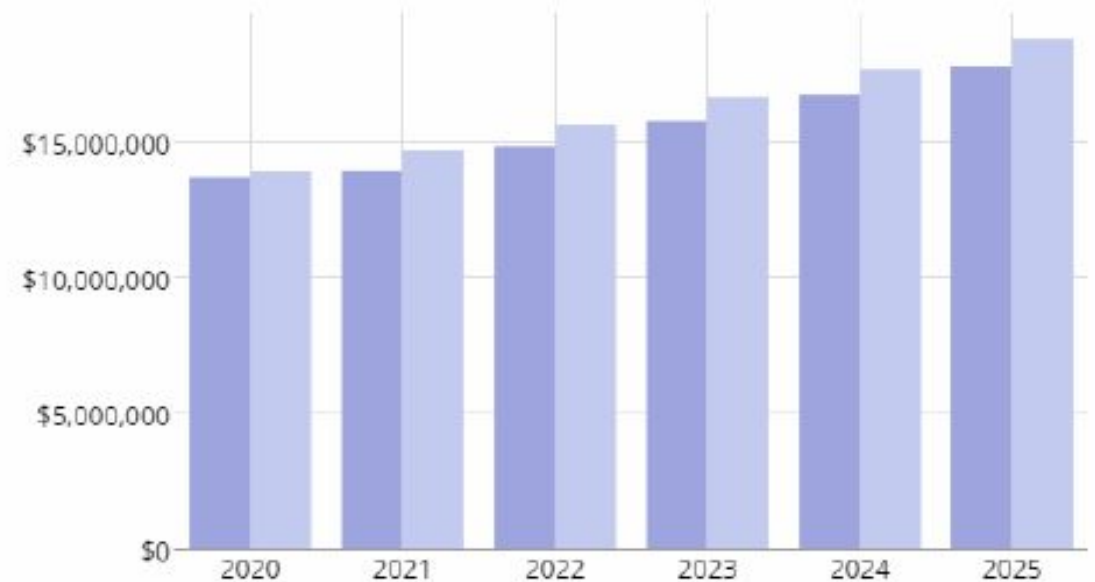
Advocacy

- ASBO released a report discussing small city schools
- CECSD is a high needs small city school
- Conclusion of this study notes that demographic, achievement, and fiscal data shows, high need small city school districts often have similar profiles to the state's Big Four city school districts, facing a serious resource gap

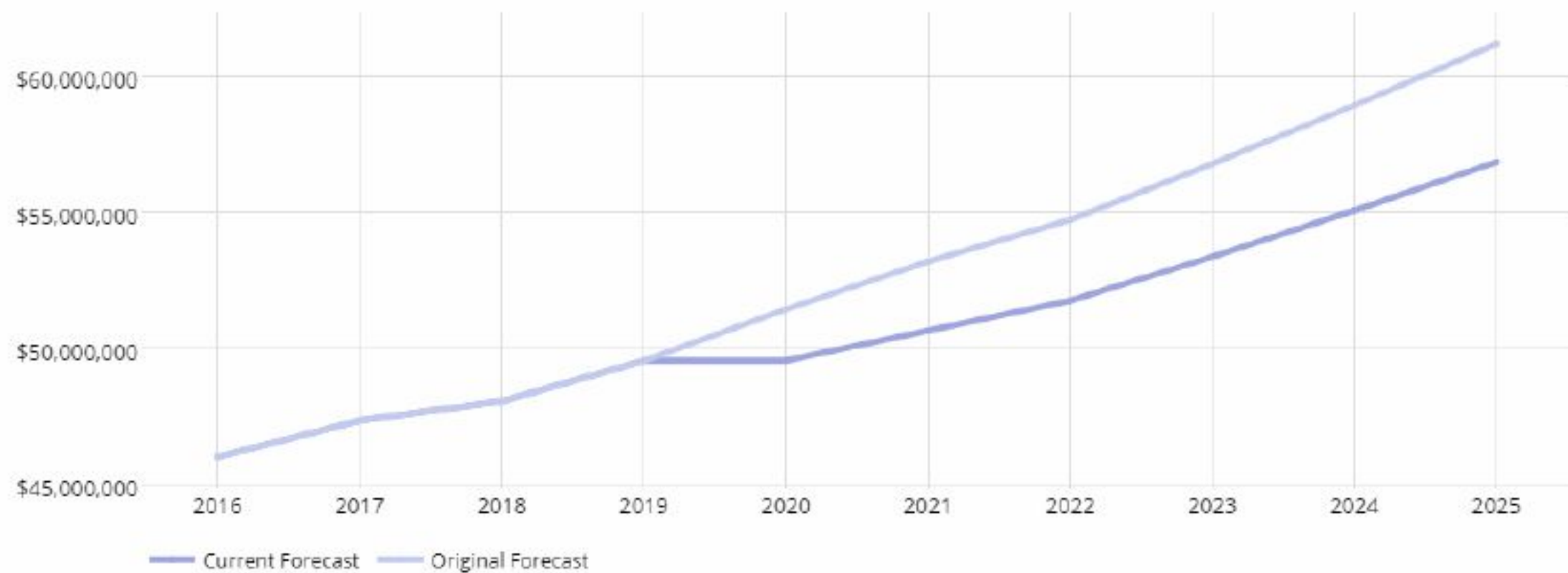
Salaries - General Fund



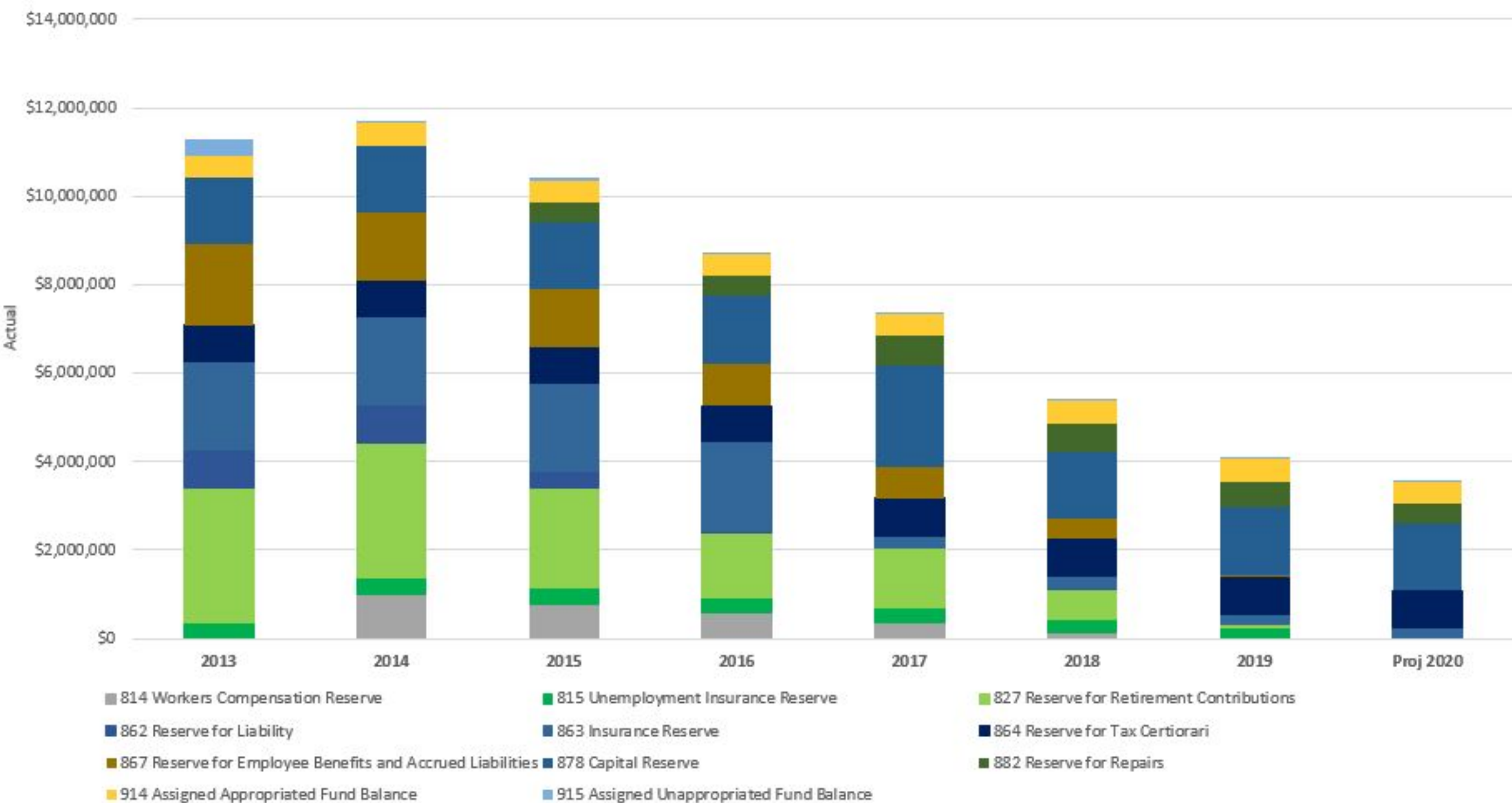
Benefits - General Fund



General Fund Expenses



Fund Balance and Reserves



Balancing the budget

	2015-16	2016-17	2017-18	2018-19	2019-20
Budgeted expenses	\$49,576,887	\$49,576,887	\$49,576,887	\$49,576,887	\$49,576,887
Revenues	\$44,076,887	\$45,100,176	\$46,723,745	\$47,201,000	\$48,312,716
Budget Gap	\$5,500,000	\$4,476,711	\$2,853,142	\$2,375,887	\$1,264,171
Appropriated fund balance	\$500,000	\$500,000	\$500,000	\$500,000	\$500,000
Reserves	\$5,000,000	\$3,976,711	\$2,353,142	\$1,875,887	\$ 764,171
Change in budget	0	0	0	0	0

Next steps

- Continue to update projected expenses as detail is available
- Many more unknowns than usual
- Budget codes are being realigned due to transparency requirement