

# Cortland Enlarged City School District

Quarterly Academic Progress Report

May 11, 2010

Laurence T. Spring, Superintendent

# Cortland Enlarged City School District

---

## Quarterly Academic Progress Report 2009-2010 Third Quarter Results

# Table of Contents

■ <b>Elementary Third Quarter Academic Report</b>	<b>3</b>
■ Elementary Literacy	4 – 9
■ Elementary Mathematics	10
■ Elementary Social Studies	11
■ Elementary Science and Health	12
■ Elementary Attendance	13
■ Elementary Conclusions	14
■ <b>Junior High Third Quarter Academic Report</b>	<b>15</b>
■ Junior High Core Subject Passing Rates	16 – 19
■ Junior High Course Failure Comparisons	20
■ Junior High Attendance	21
■ Junior High Conclusions	22
■ <b>High School Third Quarter Academic Report</b>	<b>23</b>
■ High School ELA	24 – 26
■ High School Math	27 – 29
■ High School Science	30 – 32
■ High School Social Studies	33 – 35
■ High School Course Failure Comparisons	36 – 37
■ High School Attendance, Graduation Rates, and Drop-out Comparison	38 – 40
■ High School Conclusions	41

## Board of Education

**President:** Lisa Hoeschele

**Vice-President:** William Young

Sean Clark  
LouAnne Ten Kate

Joseph Lyman

Alane Van Donsel  
Mary Lou Bordwell

# Academic Progress Report

## Grades K - 6

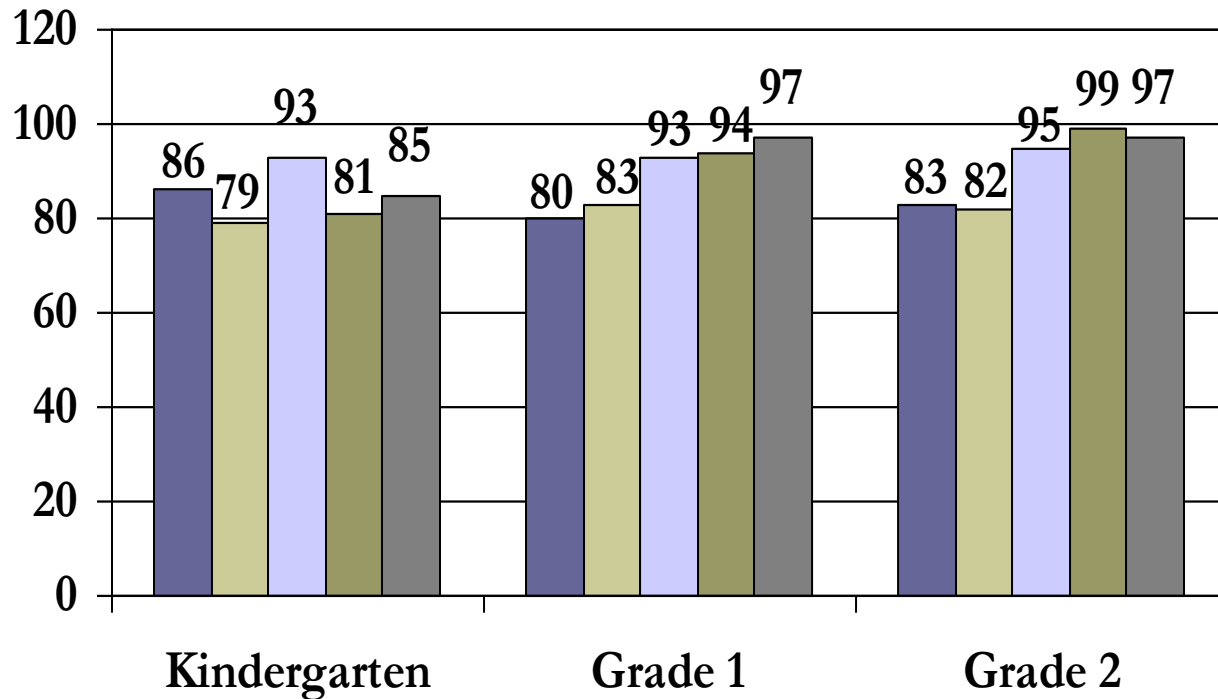
---

- Elementary data includes data such as attendance and report card scores as well as new baseline data for grades K – 3.
- Percentages for K are generated as an average of total students receiving Vs, Ss, Is and Ns. Scores for grades 1 – 6 are generated as the percentage of 4s, 3s, 2s, & 1s or As, Bs & Cs given on report cards.
- Grade Level Leaders are guiding monthly discussions of curriculum, data and practices.
- Students in grades K – 6 are expected to reach grade level standards by the end of the year. Scores represent the percentage of students whose scores reflect grade level proficiency in broad academic terms.

# Elementary Literacy

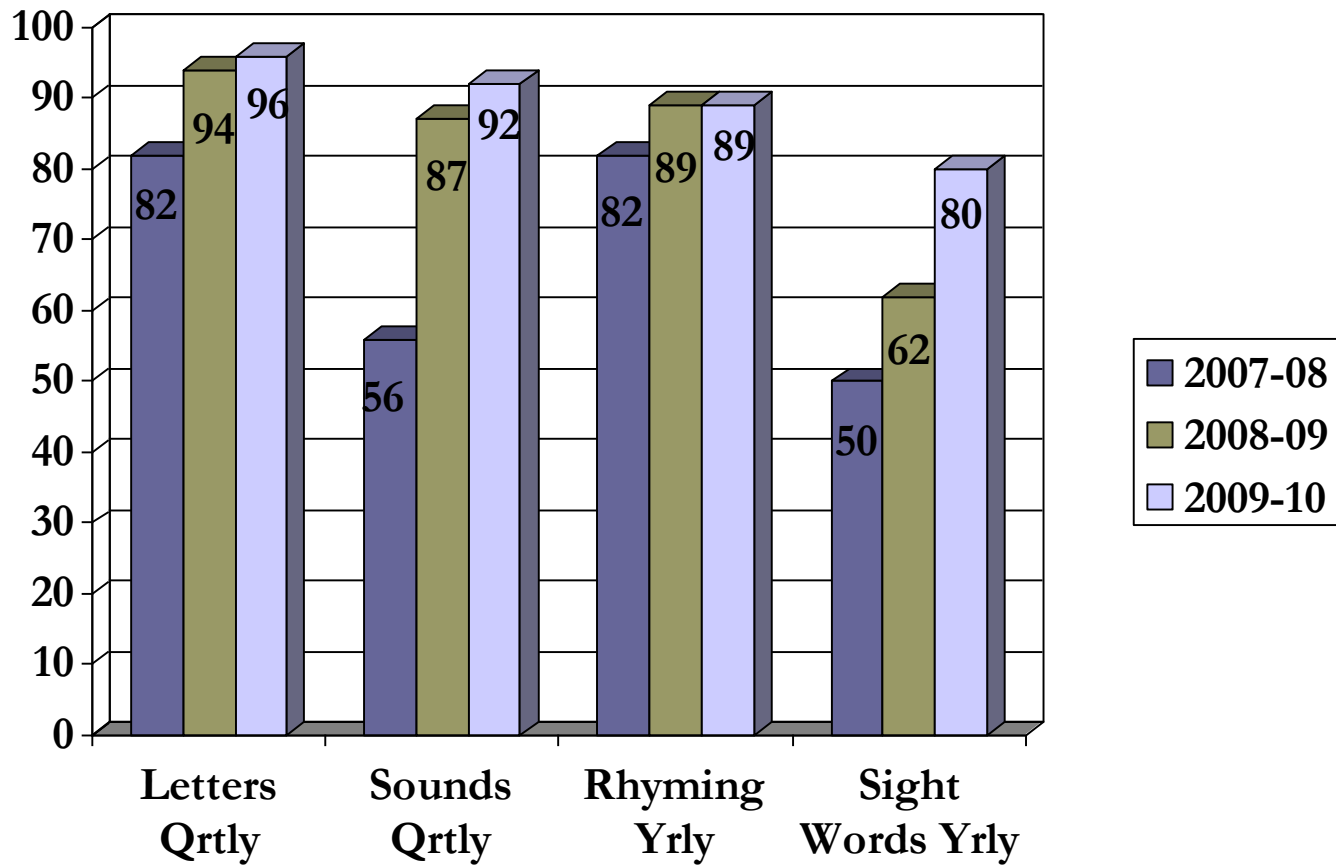
Percentage of Students Demonstrating Adequate Progress  
in Literacy Grade Level Standards

5-Year History – 3<sup>rd</sup> Quarter Report Card Progress



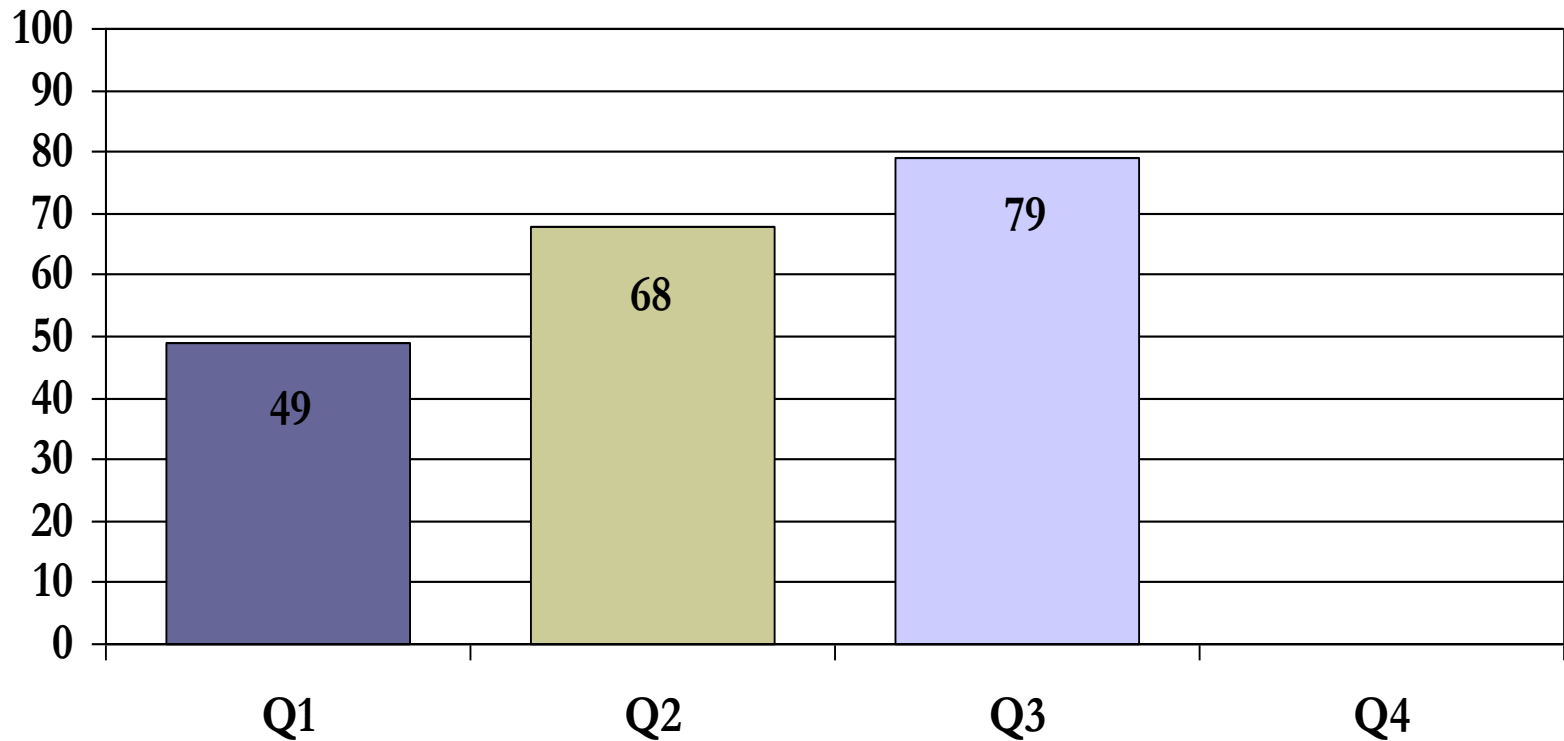
■ 05-06 ELA ■ 06-07 ELA ■ 07-08 ELA  
■ 08-09 ELA ■ 09-10 ELA

# Percentage of Kindergarten Students Achieving Expected Quarterly / Yearly Proficiencies



# 1<sup>st</sup> Grade DRA

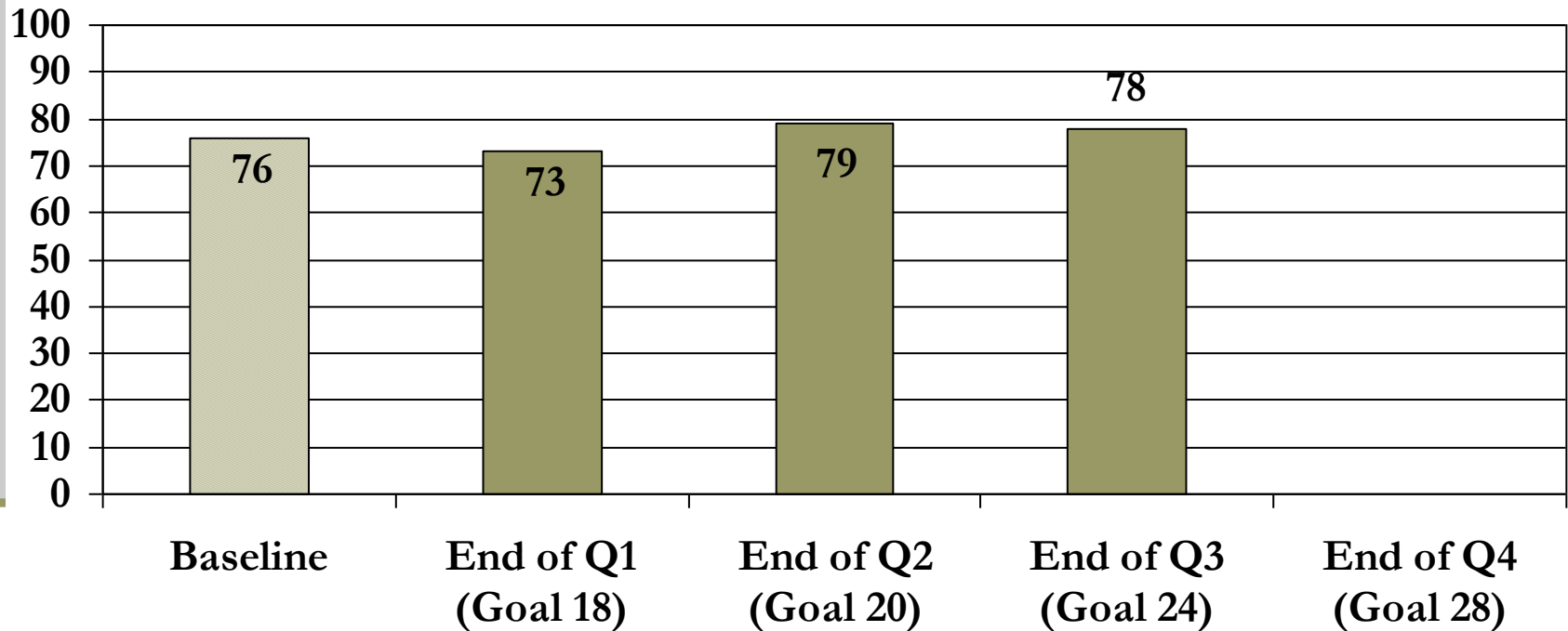
## 3<sup>rd</sup> Quarter



# 2<sup>nd</sup> Graders

## % Meeting Reading & Writing Benchmarks

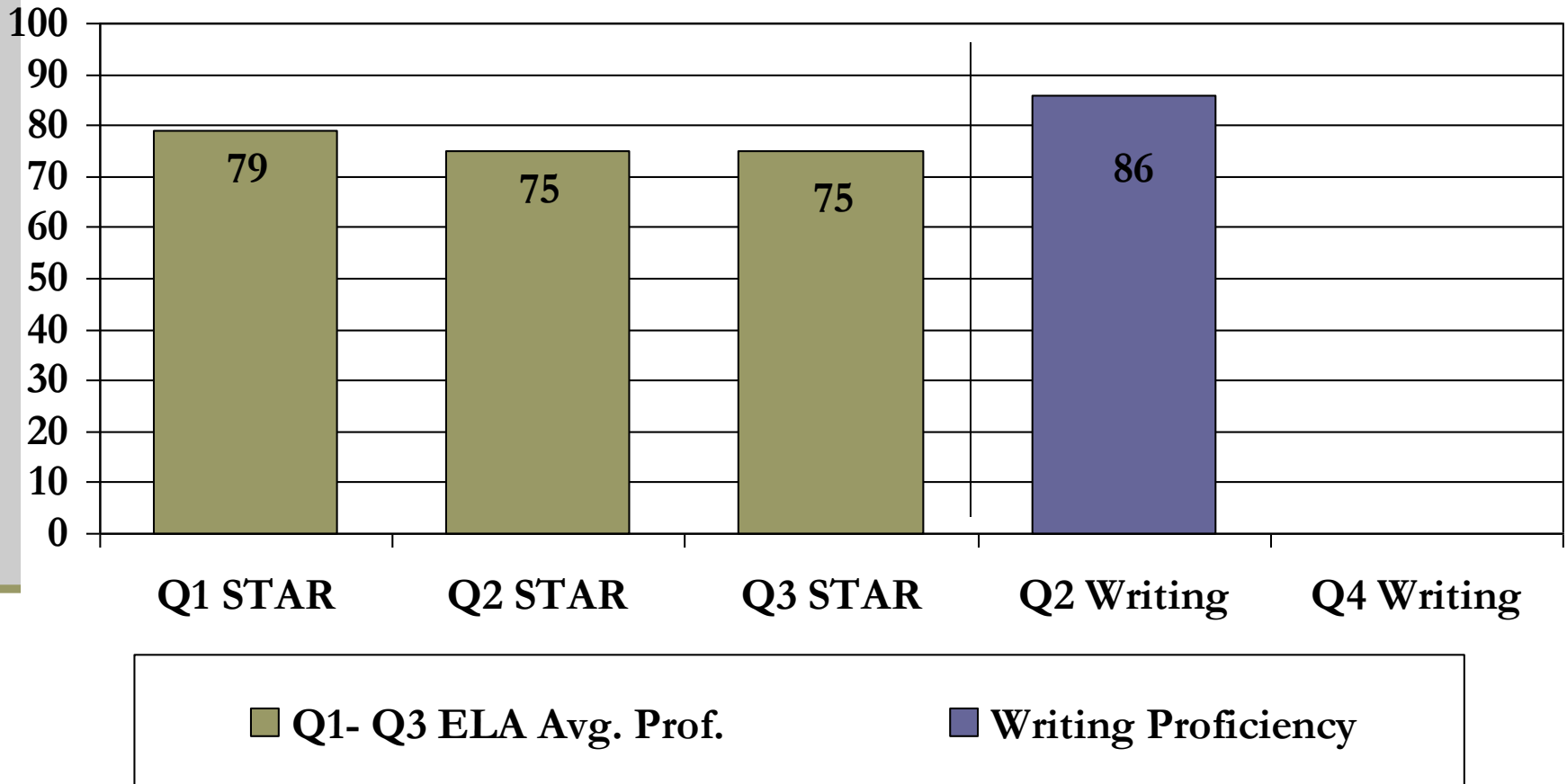
### 3<sup>rd</sup> Quarter



# 3<sup>rd</sup> Graders

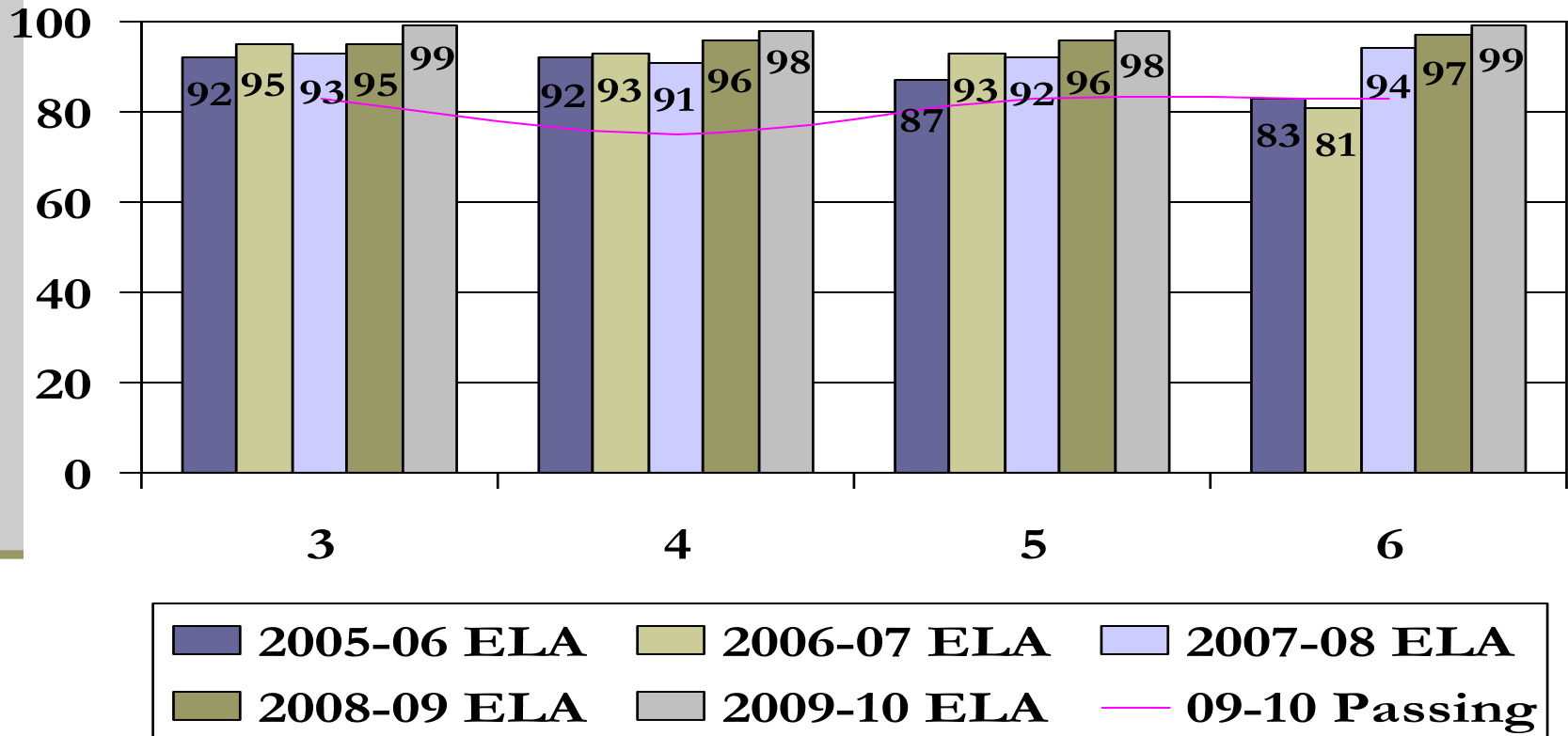
## % Meeting Reading & Writing Benchmarks

### 2<sup>nd</sup> Quarter



# Elementary Literacy

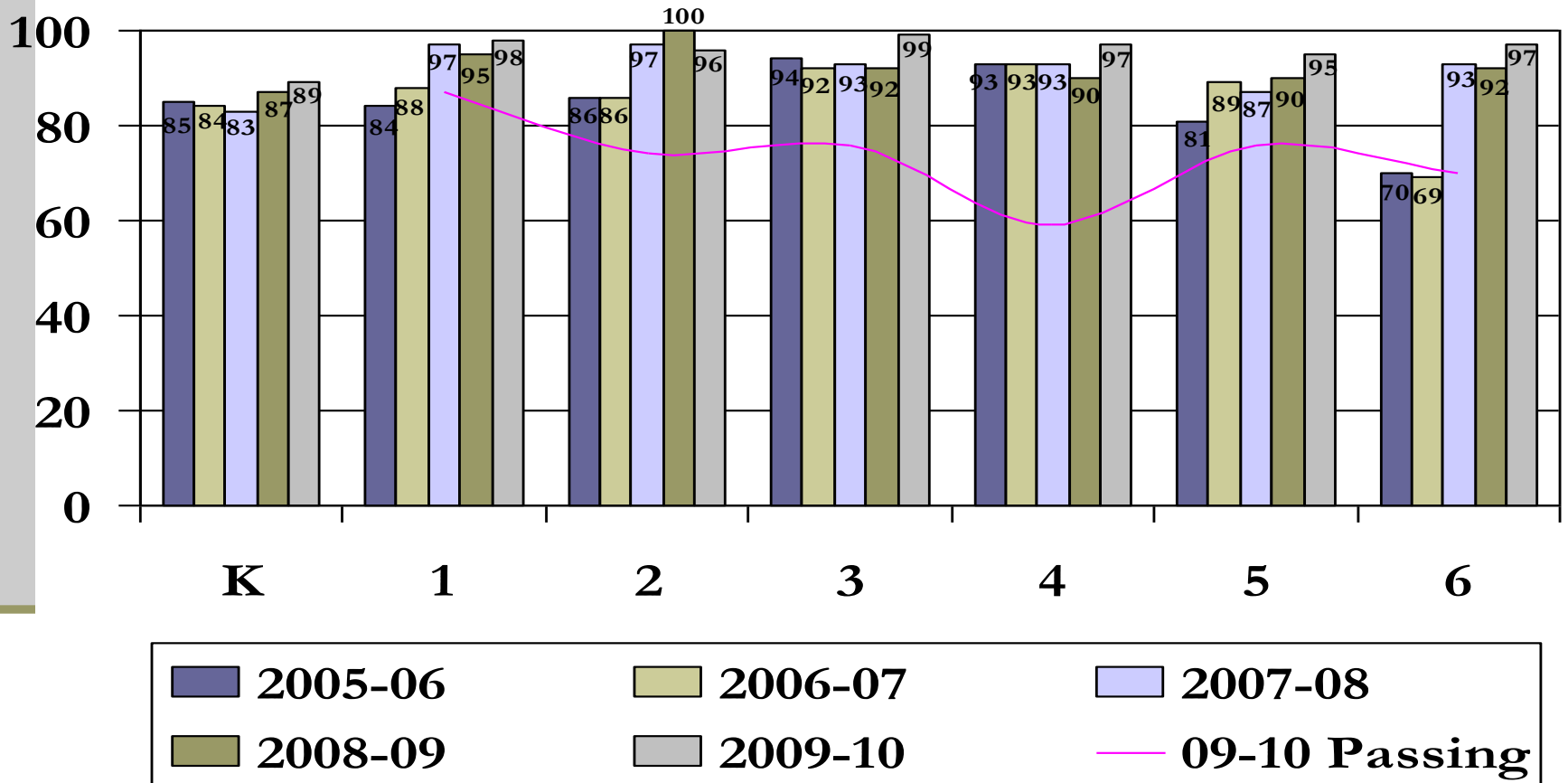
Upper Grades Adequate Progress Comparison  
5-Year History - 3<sup>rd</sup> Quarter



# Elementary Numeracy & Mathematics

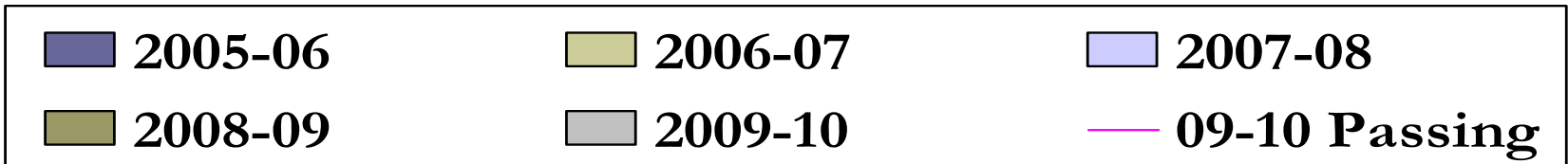
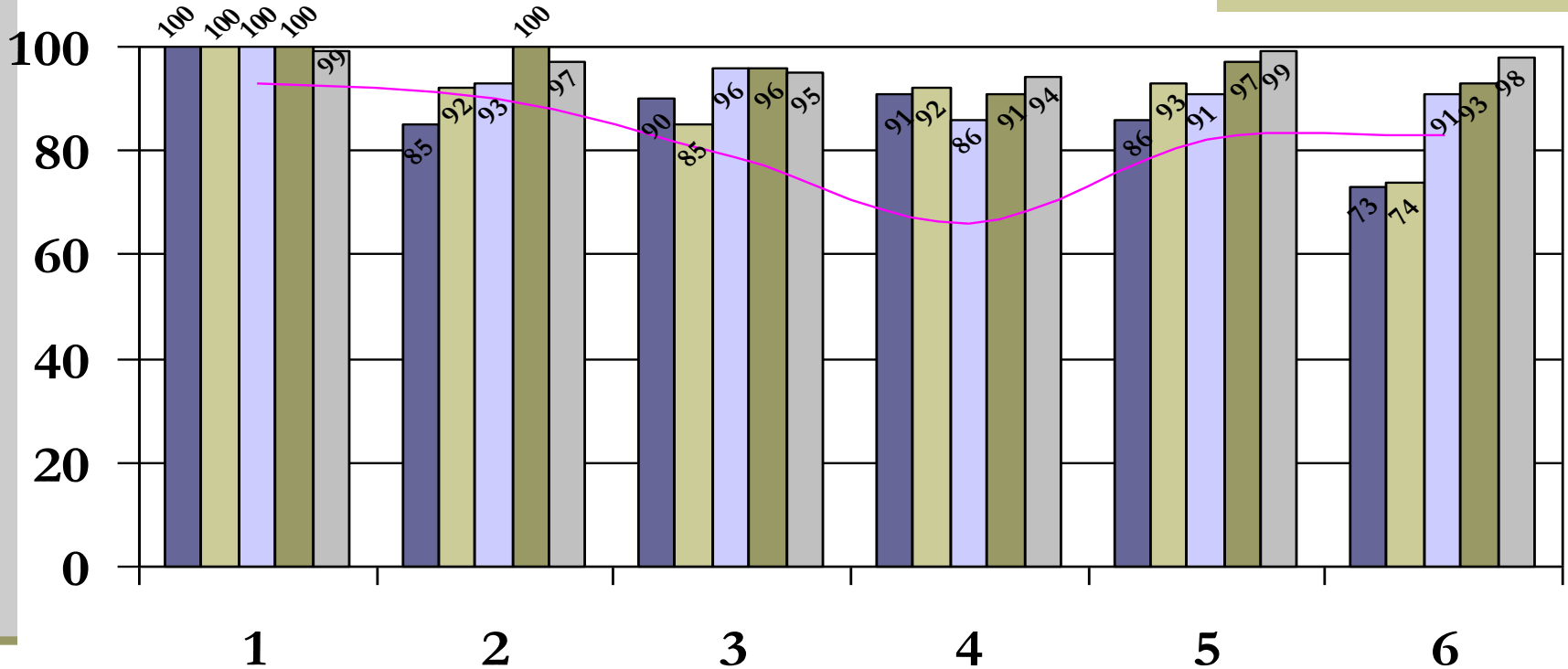
Adequate Progress Comparison

5-Year History – 3<sup>rd</sup> Quarter



# Elementary Social Studies

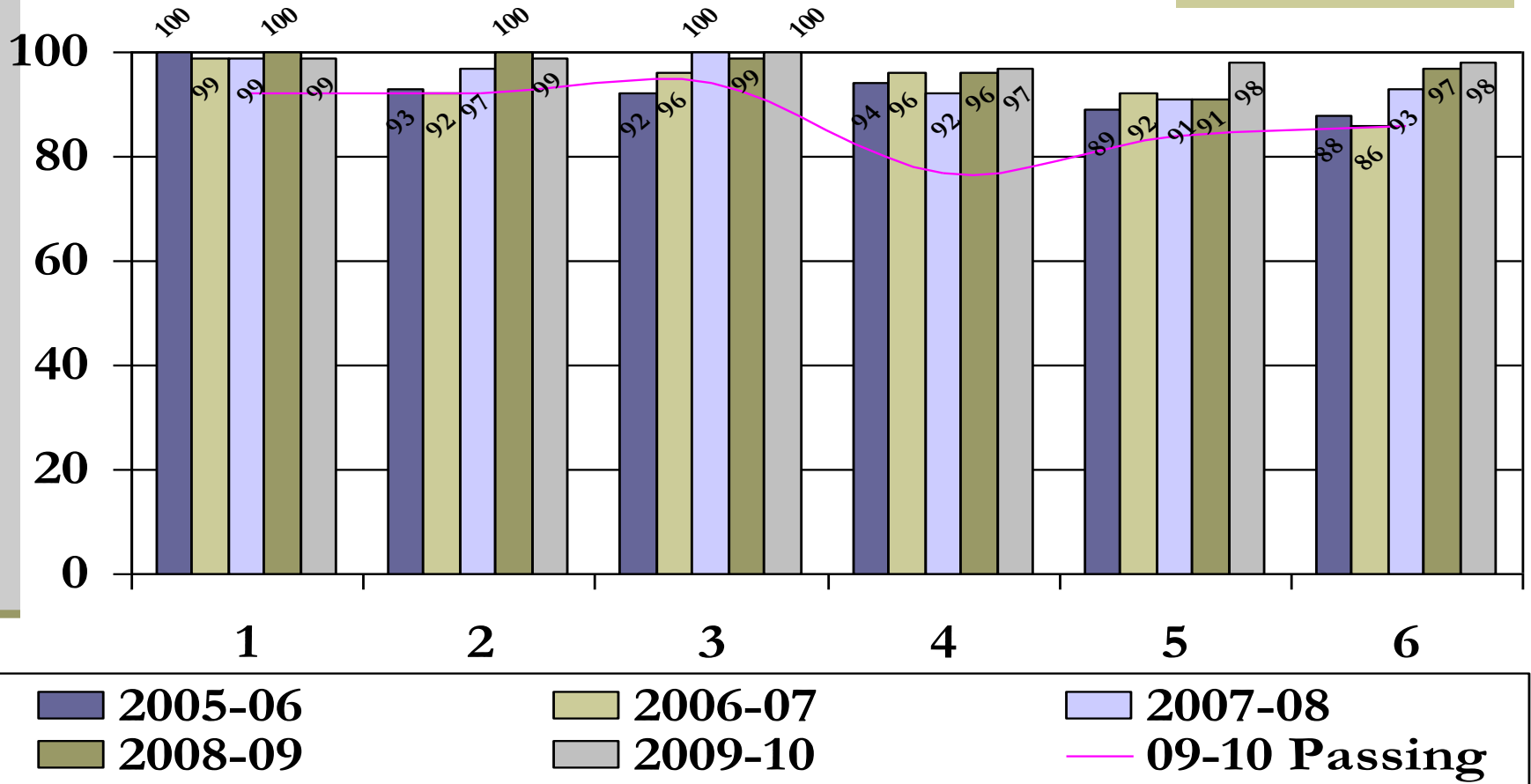
Adequate Progress Comparison  
5-Year History – 3<sup>rd</sup> Quarter



# Elementary Science & Health

Adequate Progress Comparison

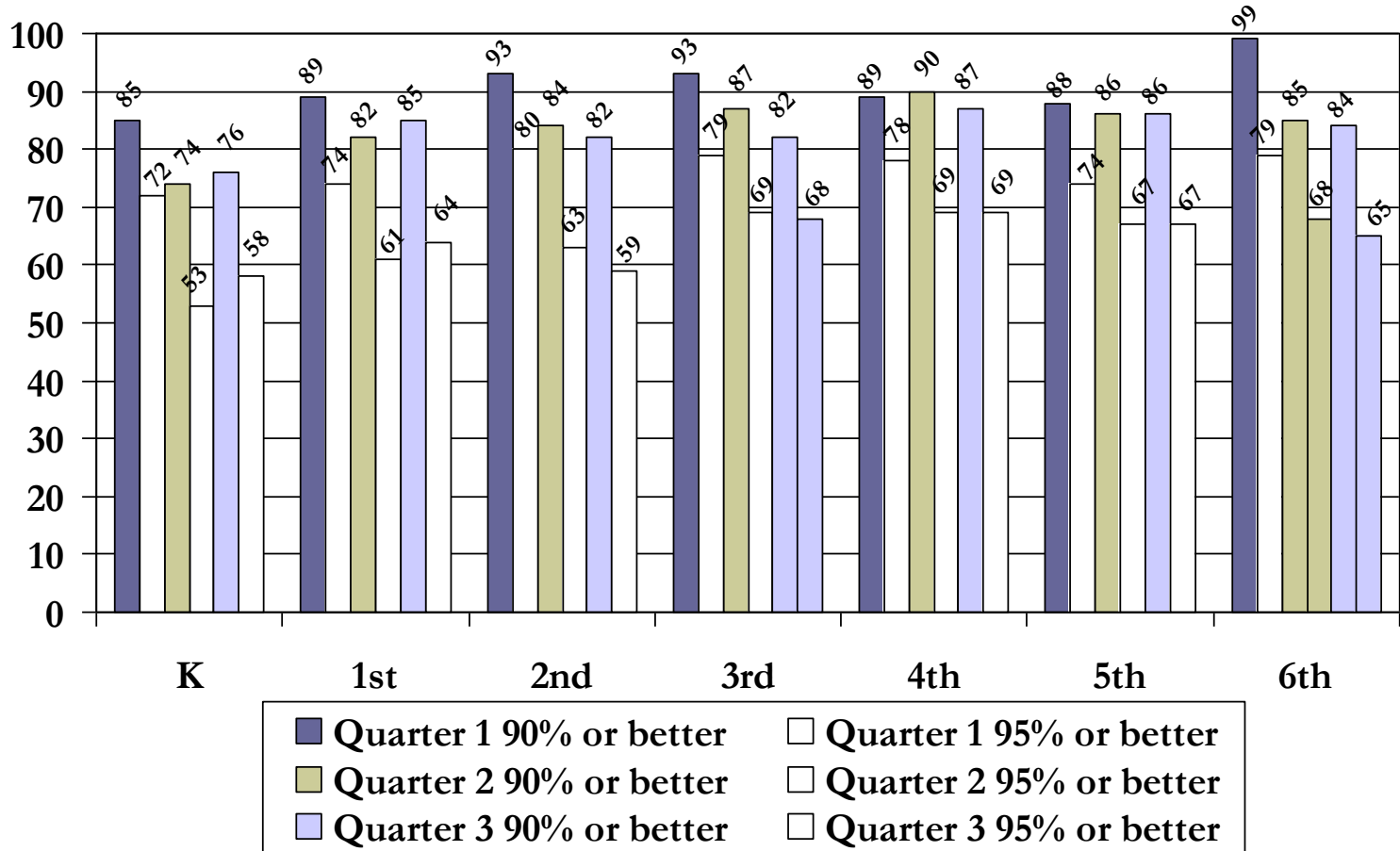
5-Year History – 3<sup>rd</sup> Quarter



# Elementary Attendance

Percentage of Students with High Attendance

Comparison – Quarters 1<sup>st</sup> - 3<sup>rd</sup>



# Elementary Conclusions

## 2009–2010 – 3<sup>rd</sup> Quarter

---

- Reports are provided electronically to administrators, and all teachers
- A new trend with upper elementary grades has emerged that shows some suppressed achievement in specific grades.
- Attendance rates continue to be a concern
- With a growing familiarity and new detail to data, buildings and grade levels apply the data by:
  - Identifying at-risk students earlier and more accurately with common assessments to focus efforts and resources for interventions
  - Engaging in discussions in grade levels, staff meetings etc. based on accurate, common student assessments
  - Reinforcing prior “gut feelings” with objective reinforcement and assessments that target specific issues
  - Support through IST

# Academic Progress Report

## Grades 7 & 8

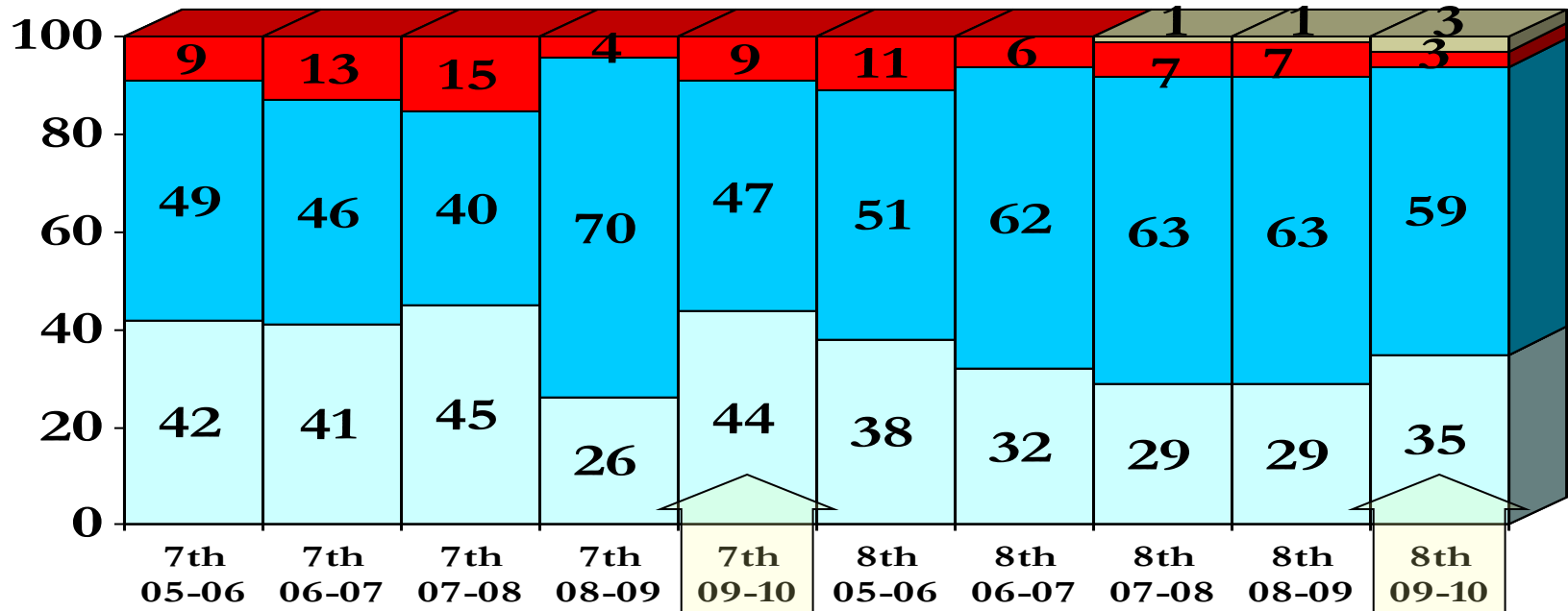
---

- In the Junior High, student successfully completing core courses along with attendance trends begin to give us a picture of academic success for the year.
- Academic reports also indicate the percentage of students that have reached mastery in a core subject area (85% or higher).
- Data from the 3<sup>rd</sup> quarter of the last four years is included for reference.

# Junior High School ELA Comparison

## Passing & Mastery

### 5-Year History – 3<sup>rd</sup> Quarter



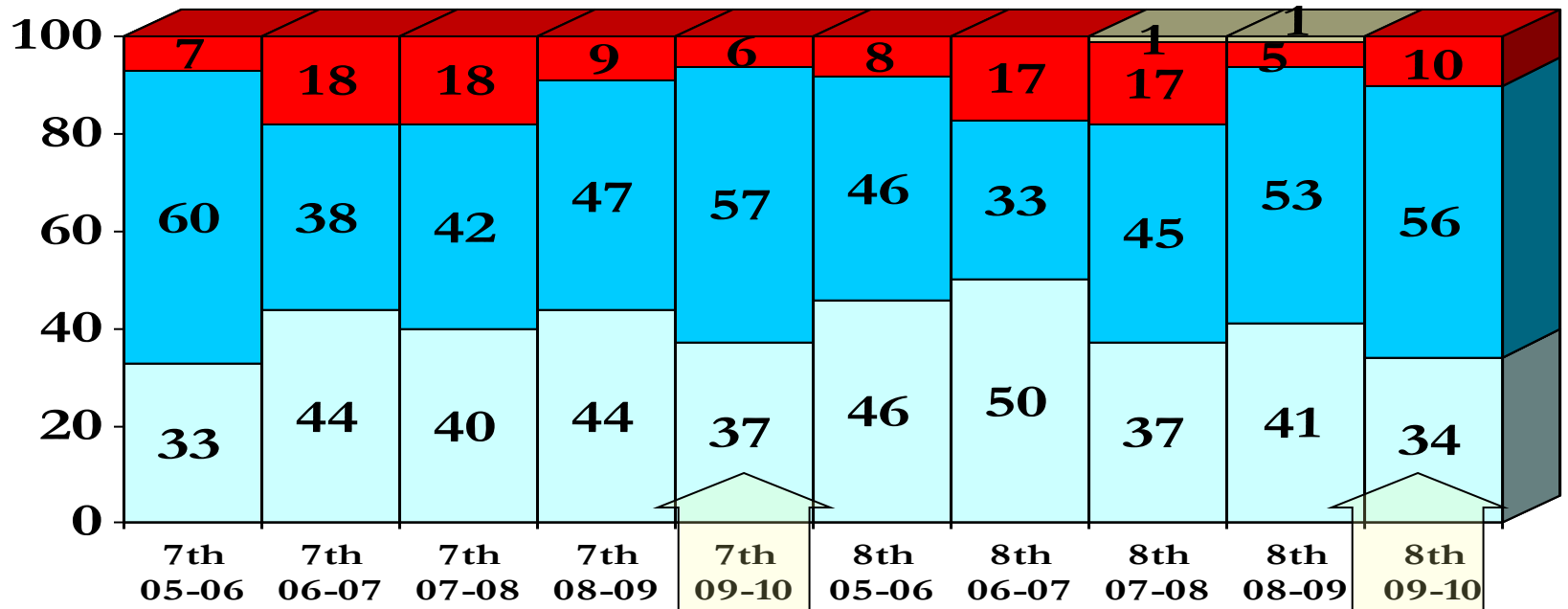
■ % Passing  
■ % Failing

■ % Passing with Mastery  
■ % Inc.

# Junior High School Math Comparison

## Passing & Mastery

### 5-Year History – 3<sup>rd</sup> Quarter



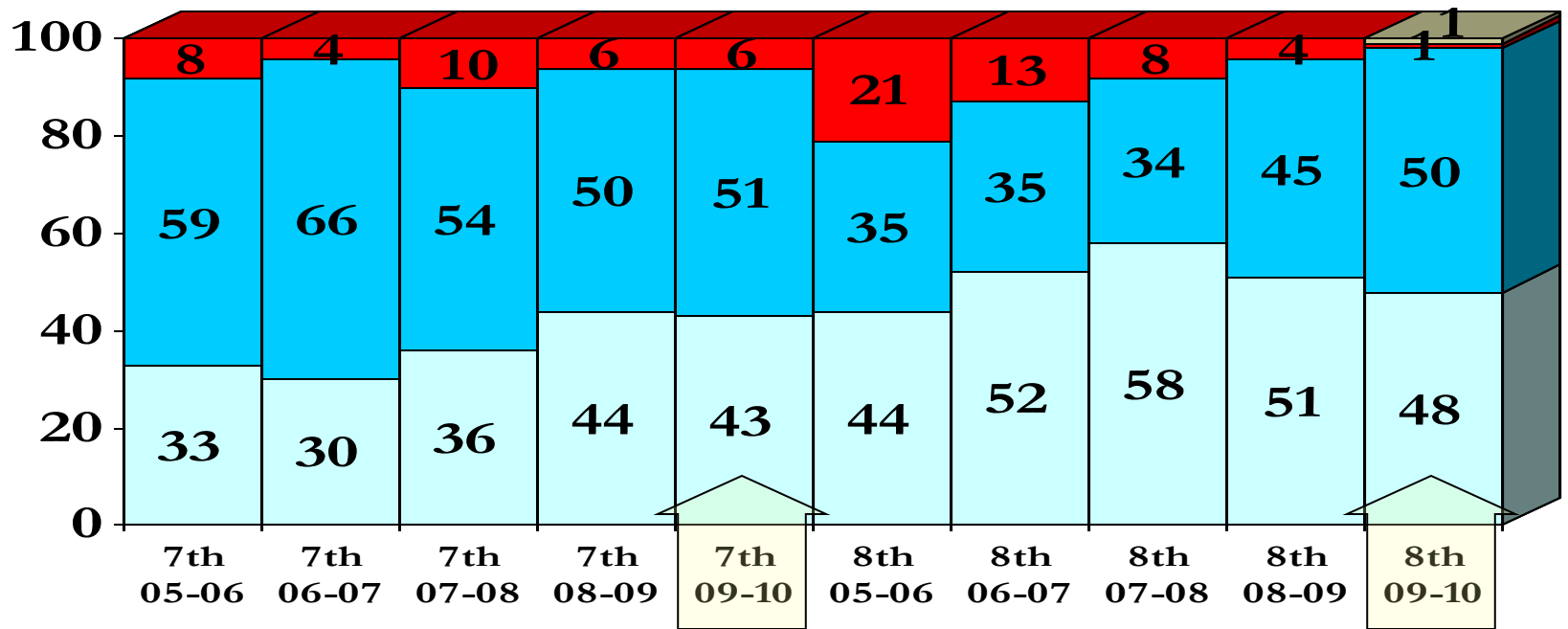
■ % Passing  
■ % Failing

■ % Passing with Mastery  
■ % Inc.

# Junior High School Science Comparison

## Passing & Mastery

### 5-Year History – 3<sup>rd</sup> Quarter



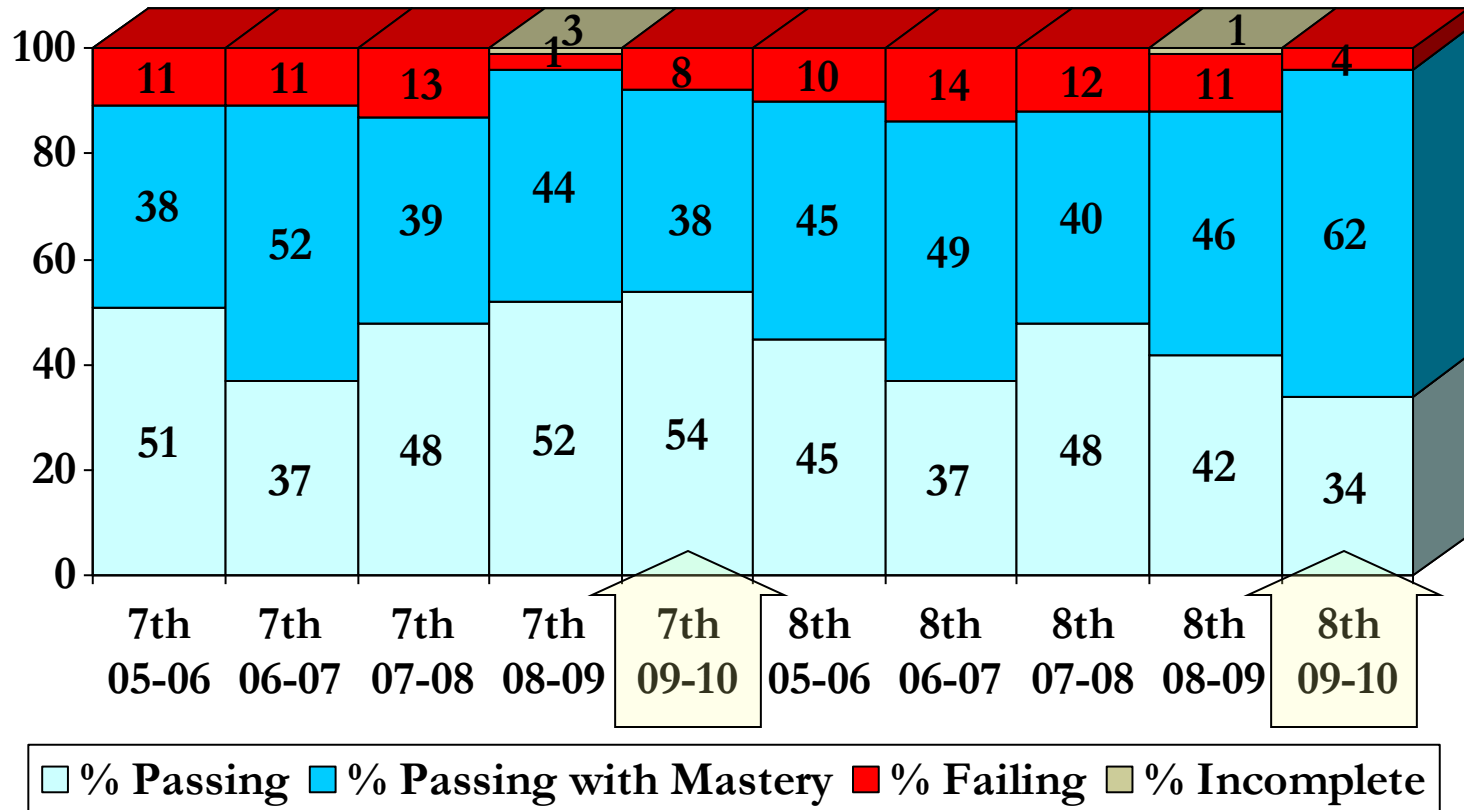
■ % Passing  
■ % Failing

■ % Passing with Mastery  
■ Incomplete

# Junior High School Social Studies Comparison

## Passing & Mastery

### 5-Year History – 3<sup>rd</sup> Quarter

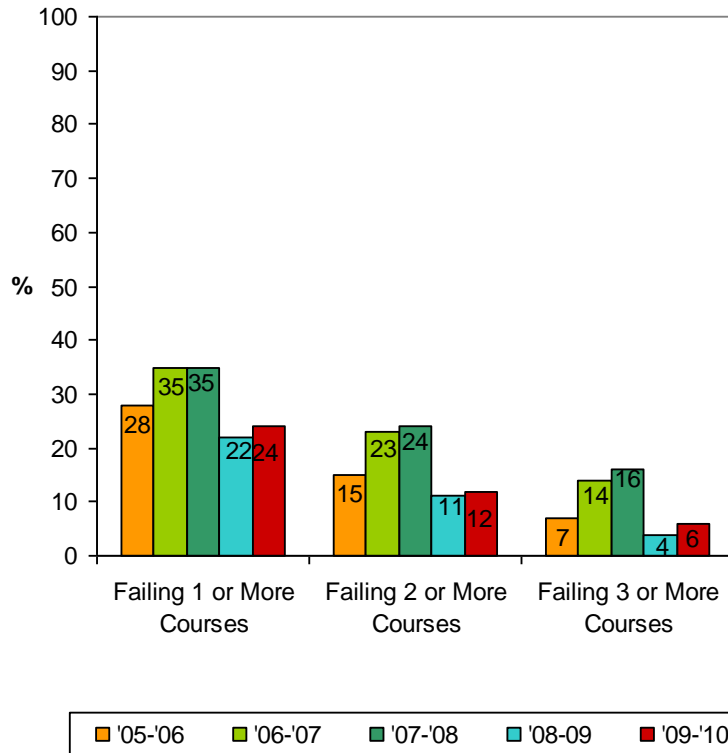


# Junior High Course Failure Comparison

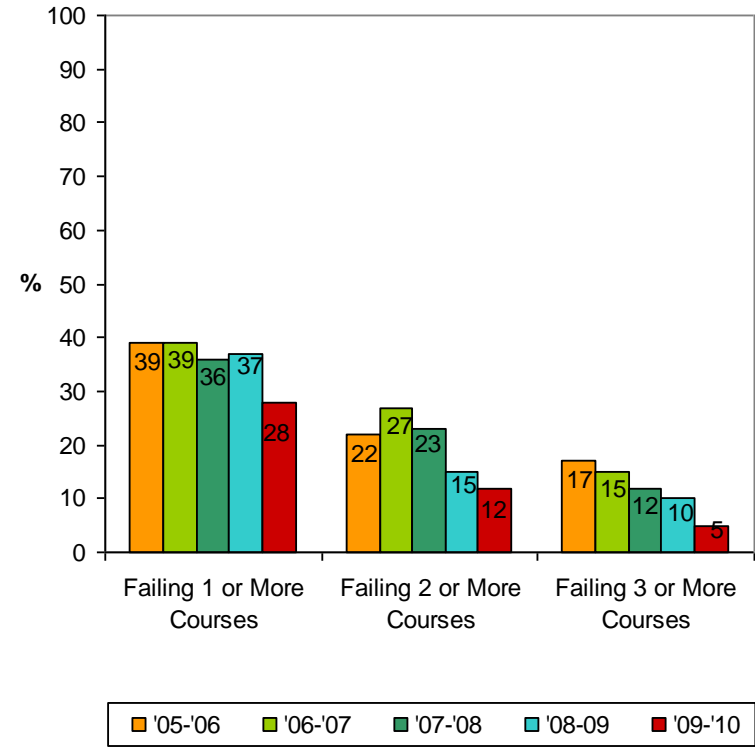
## % of Students Failing Courses

### 5-Year History – 3<sup>rd</sup> Quarter

7th Grade Student Failures



8th Grade Student Failures





# Junior High Conclusions

## 2009–2010 – 3<sup>rd</sup> Quarter

---

- Failure rates leveled or decreased during the second and third quarters after a spike first quarter.
- Junior High administration will continue looking at failures with special attention to those students who are failing one or two courses.

# Academic Progress Report

## Grades 9 - 12

---

- The following data is from core high school academic courses, overall passing levels on courses by grade level, and general trends in attendance

# Marking Period 3

---

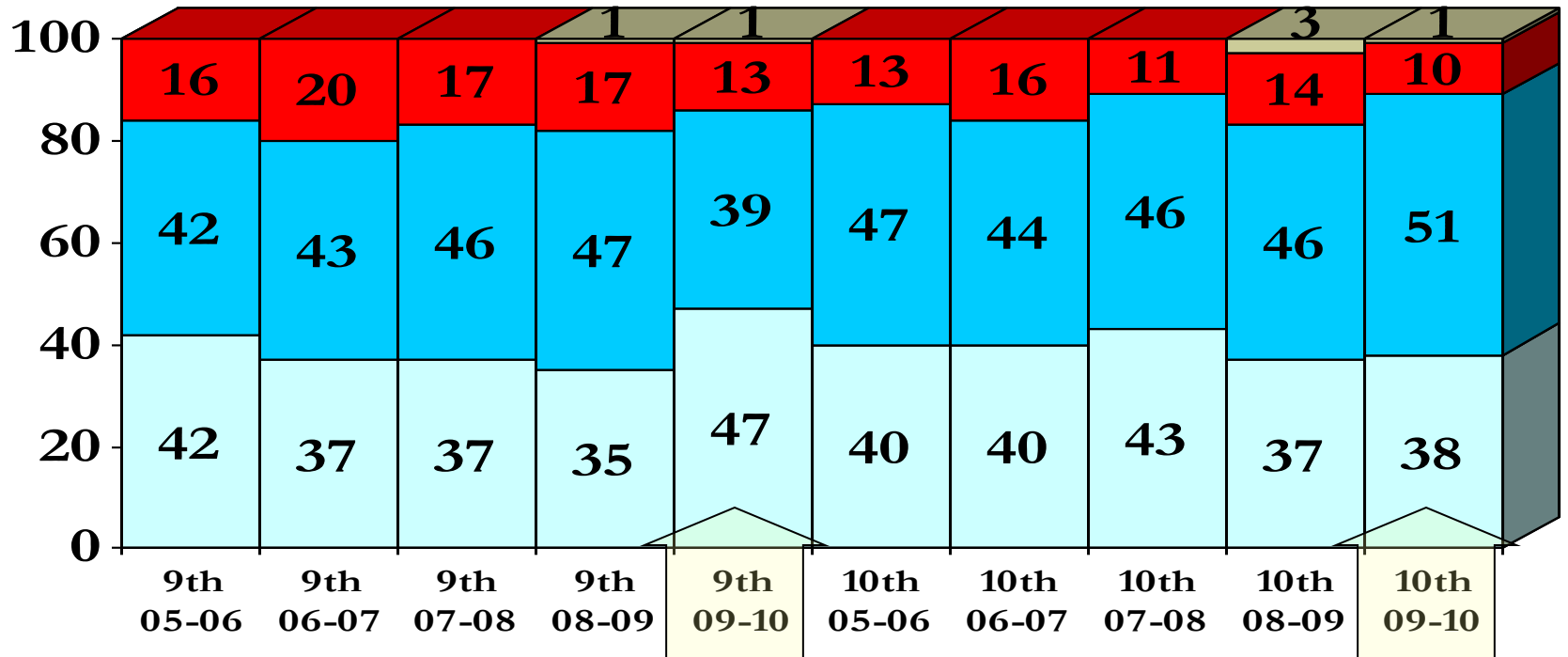
English

Language Arts

# High School ELA Comparison 9<sup>th</sup> & 10<sup>th</sup>

## Passing & Mastery

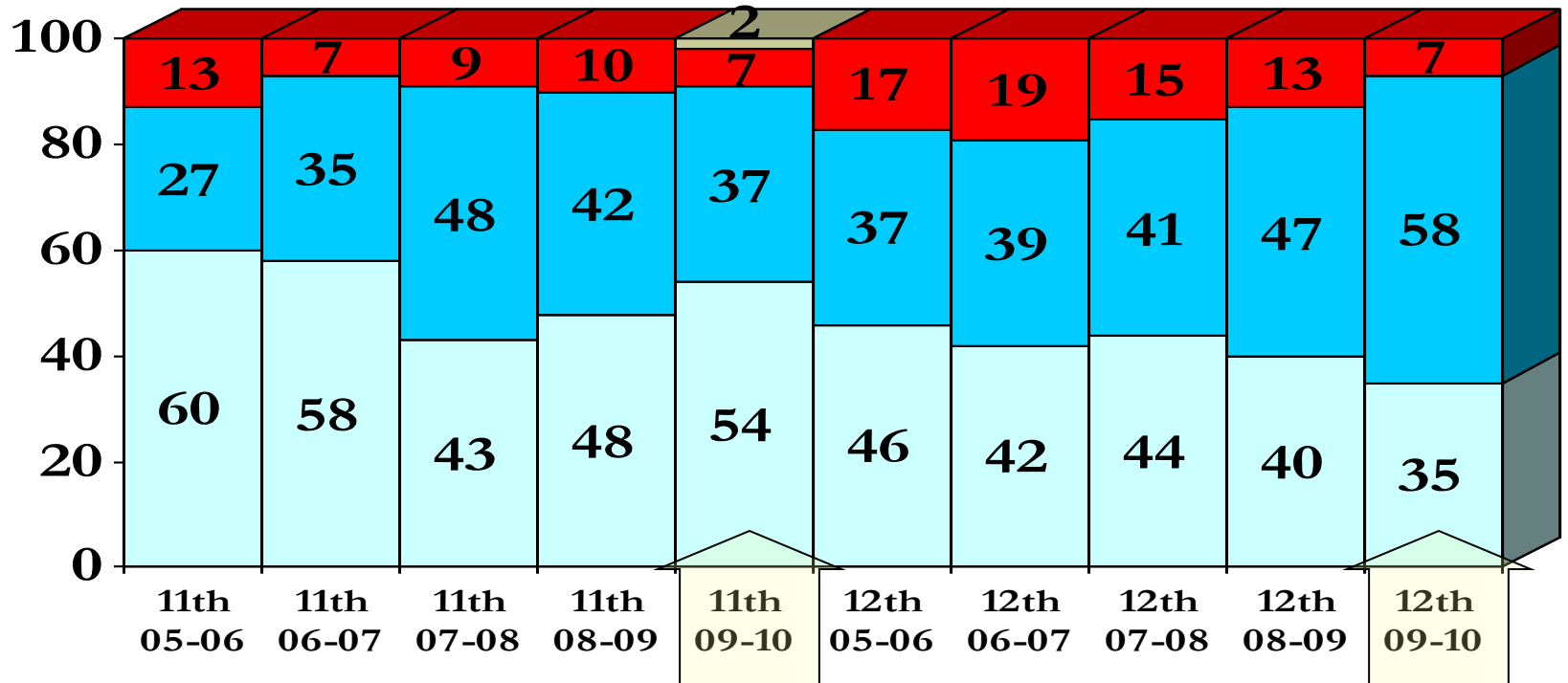
### 5-Year History – 3<sup>rd</sup> Quarter



# High School ELA Comparison 11<sup>th</sup> & 12<sup>th</sup>

## Passing & Mastery

### 5-Year History – 3<sup>rd</sup> Quarter



□ % Passing

■ % Passing with Mastery

■ % Failing

■ Incomplete

# Marking Period 3

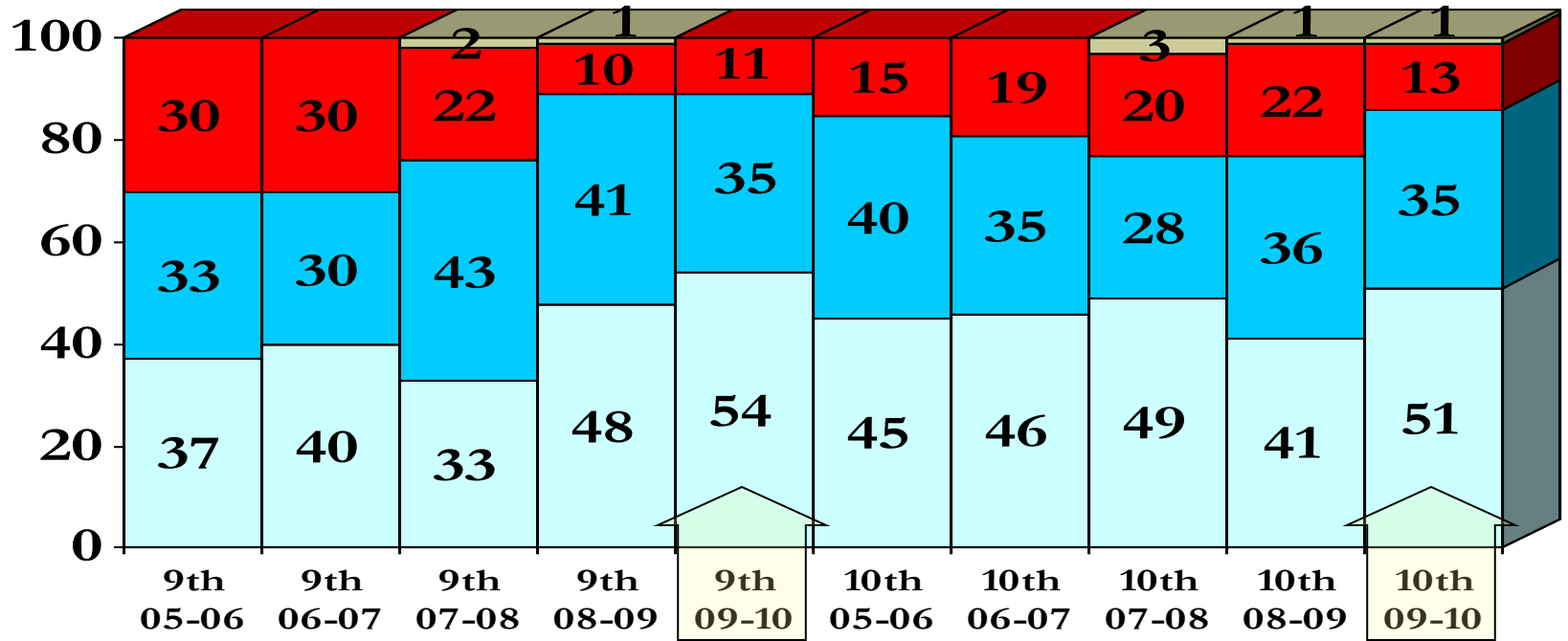
---

## Math

# High School Math Comparison 9<sup>th</sup> & 10<sup>th</sup>

## Passing & Mastery

### 5-Year History – 3<sup>rd</sup> Quarter



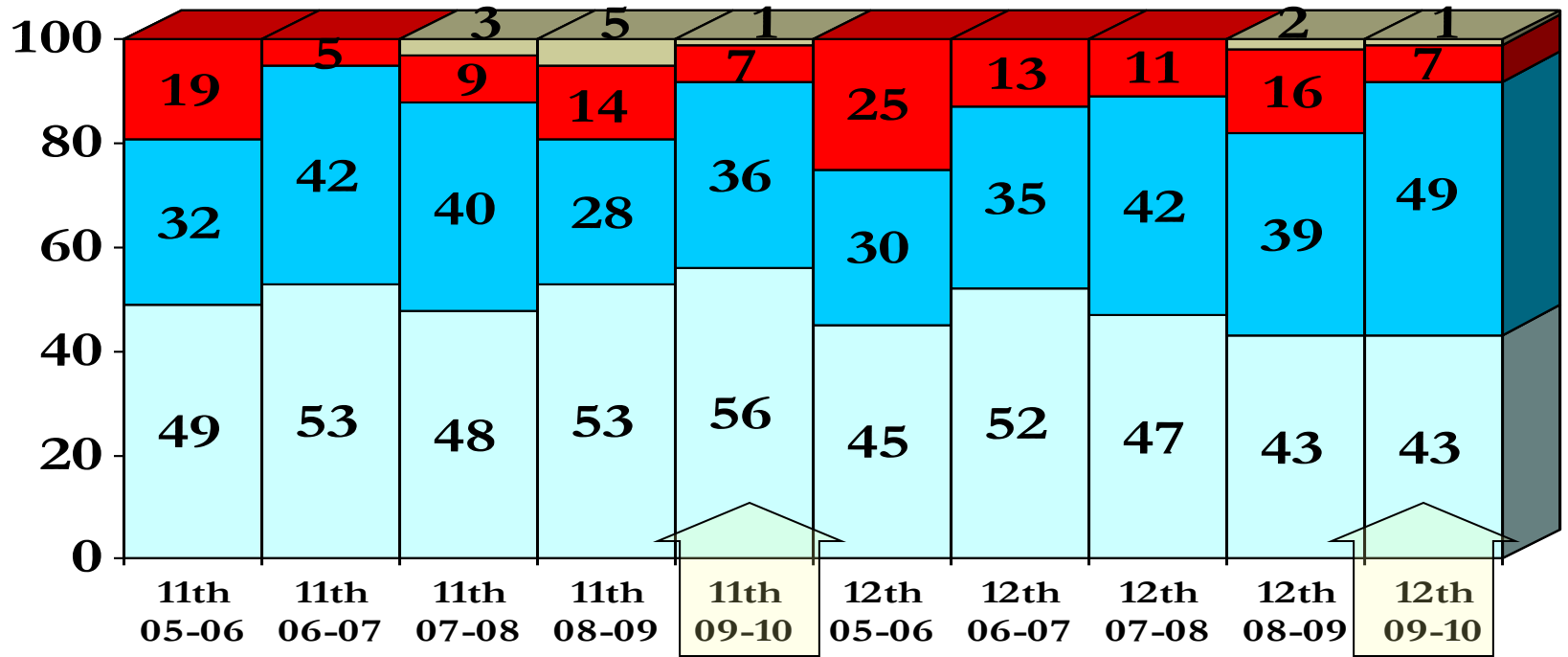
■ % Passing  
■ % Failing

■ % Passing with Mastery  
■ % Inc.

# High School Math Comparison 11<sup>th</sup> & 12<sup>th</sup>

## Passing & Mastery

### 5-Year History – 3<sup>rd</sup> Quarter



□ % Passing

■ % Passing with Mastery

■ % Failing

■ Incomplete

# Marking Period 3

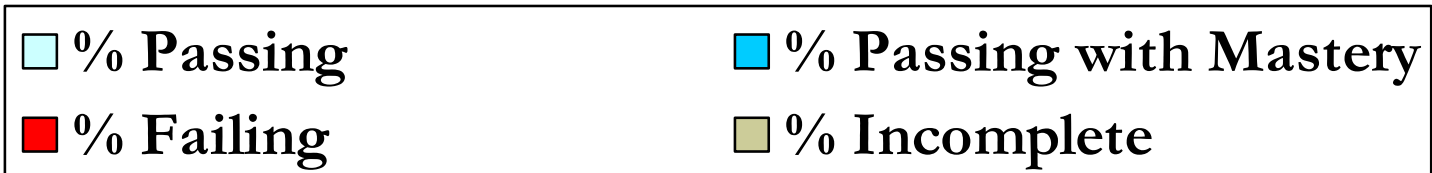
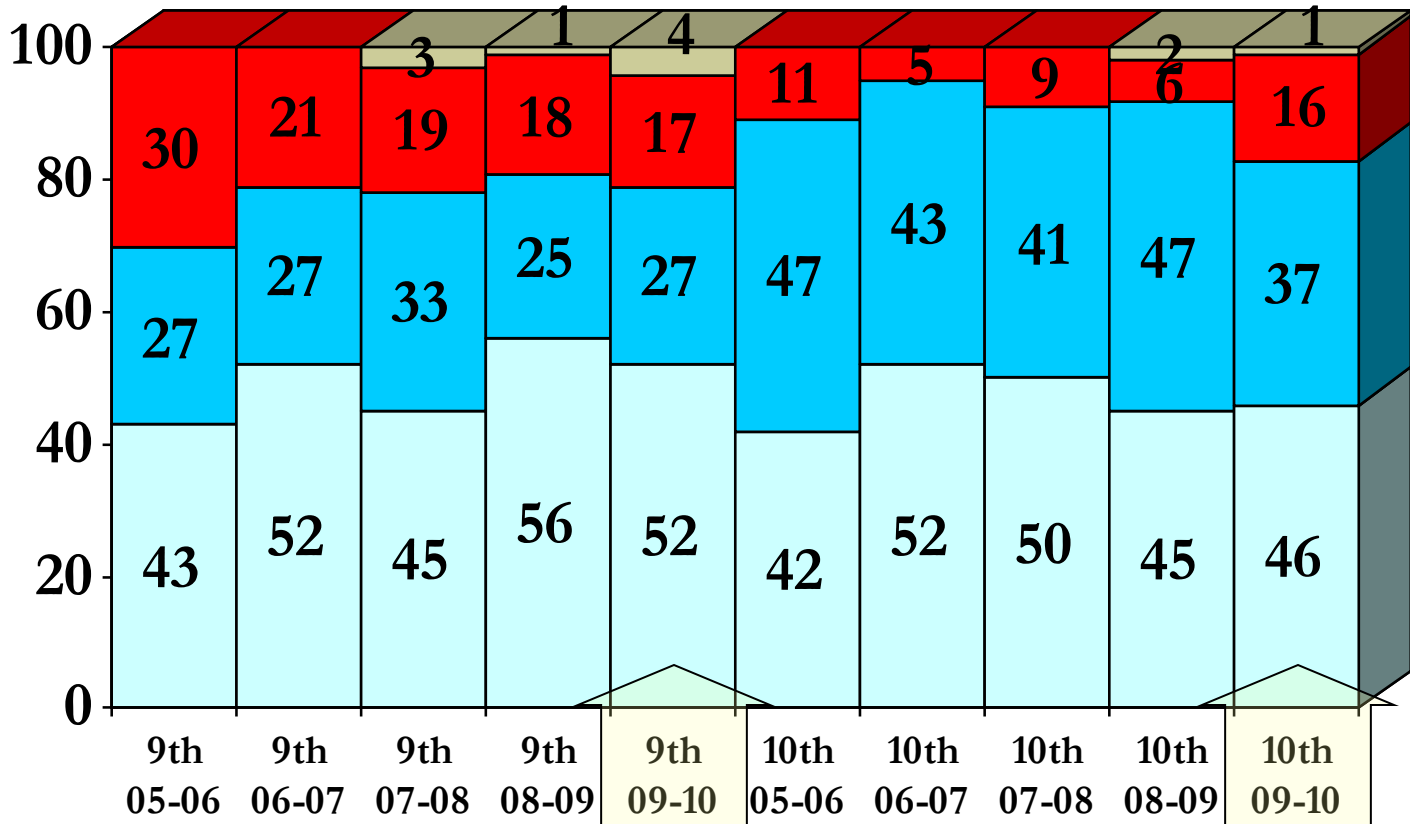
---

## Science

# High School Science Comparison 9<sup>th</sup> & 10<sup>th</sup>

## Passing & Mastery

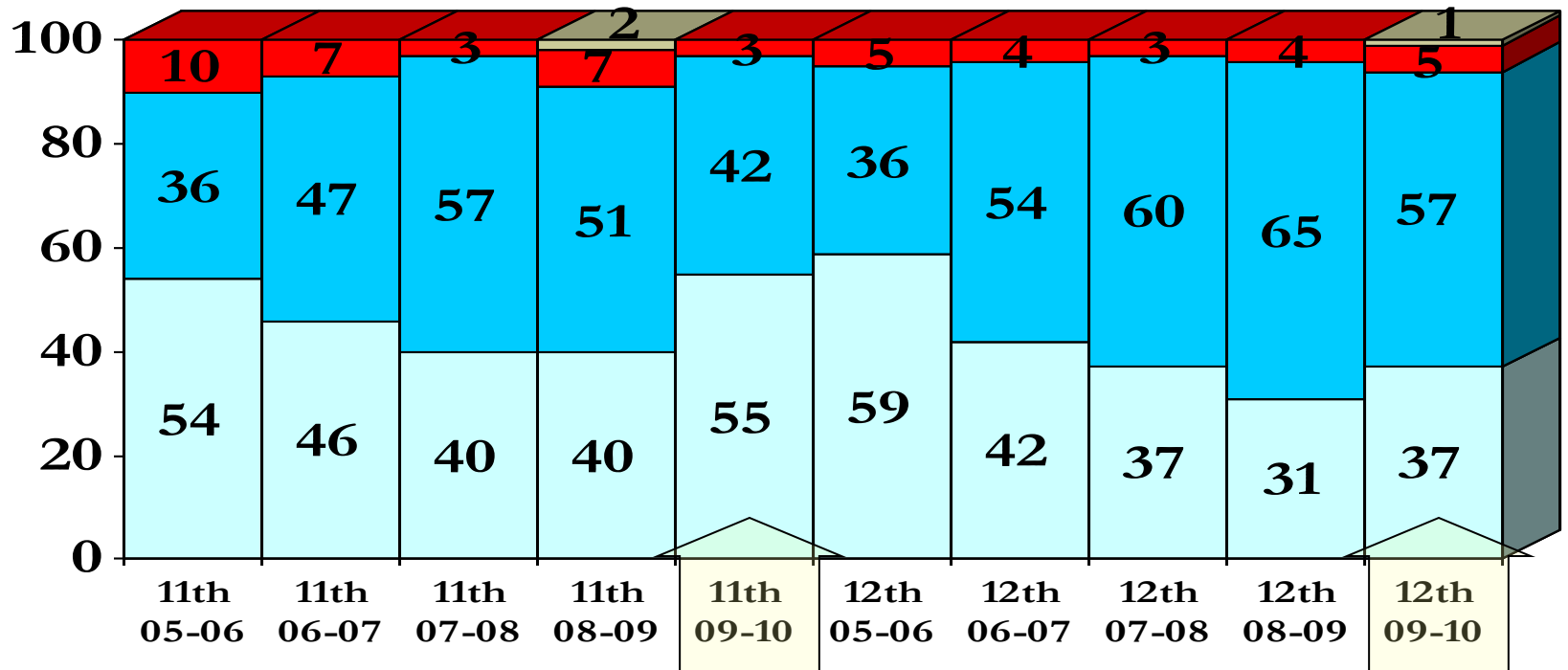
### 5-Year History – 3<sup>rd</sup> Quarter



# High School Science Comparison 11<sup>th</sup> & 12<sup>th</sup>

## Passing & Mastery

### 5-Year History – 3<sup>rd</sup> Quarter



■ % Passing

■ % Passing with Mastery

■ % Failing

■ Incomplete

# Marking Period 3

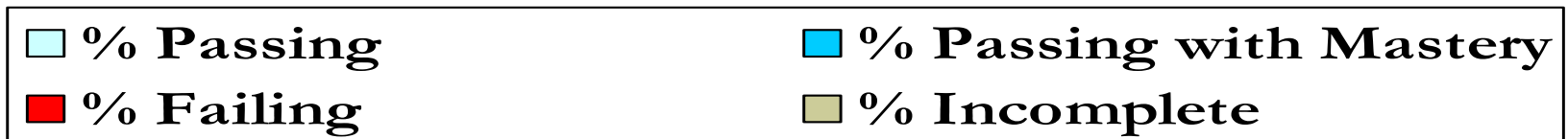
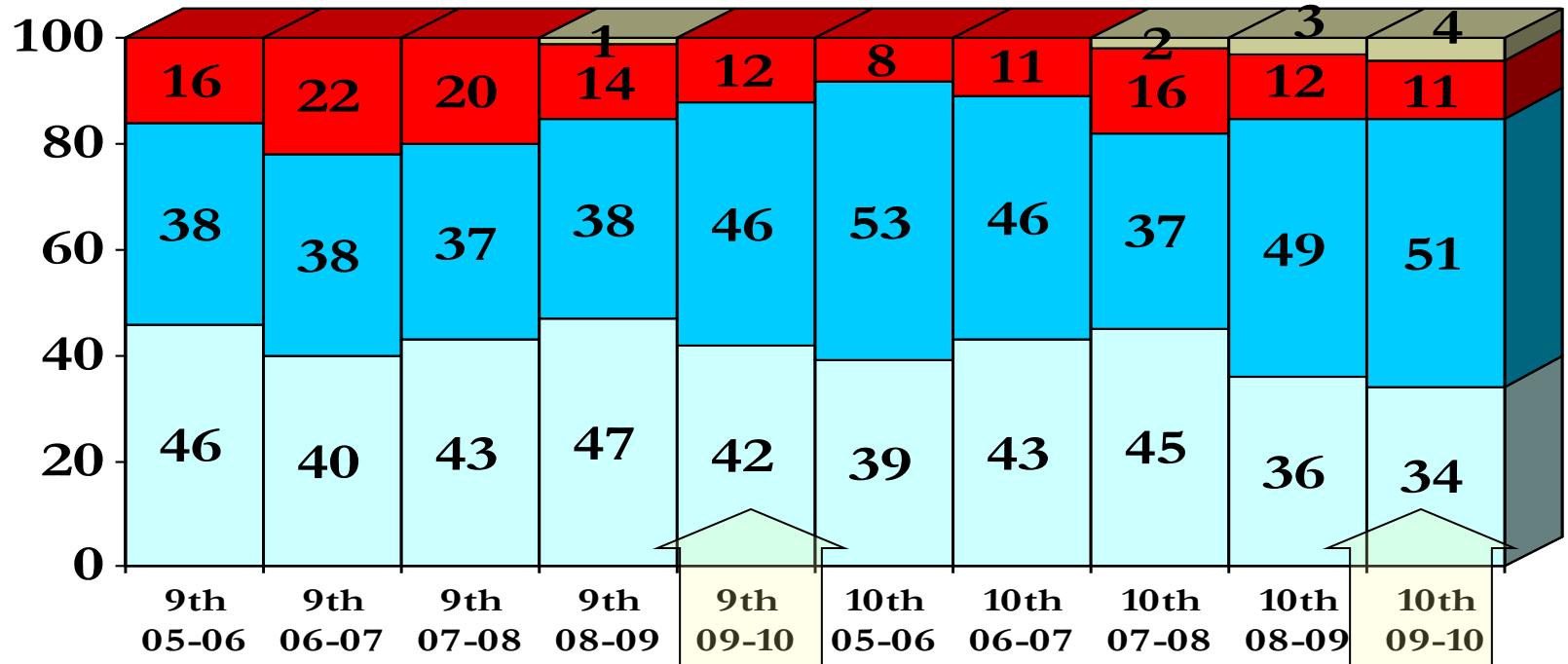
---

## Social Studies

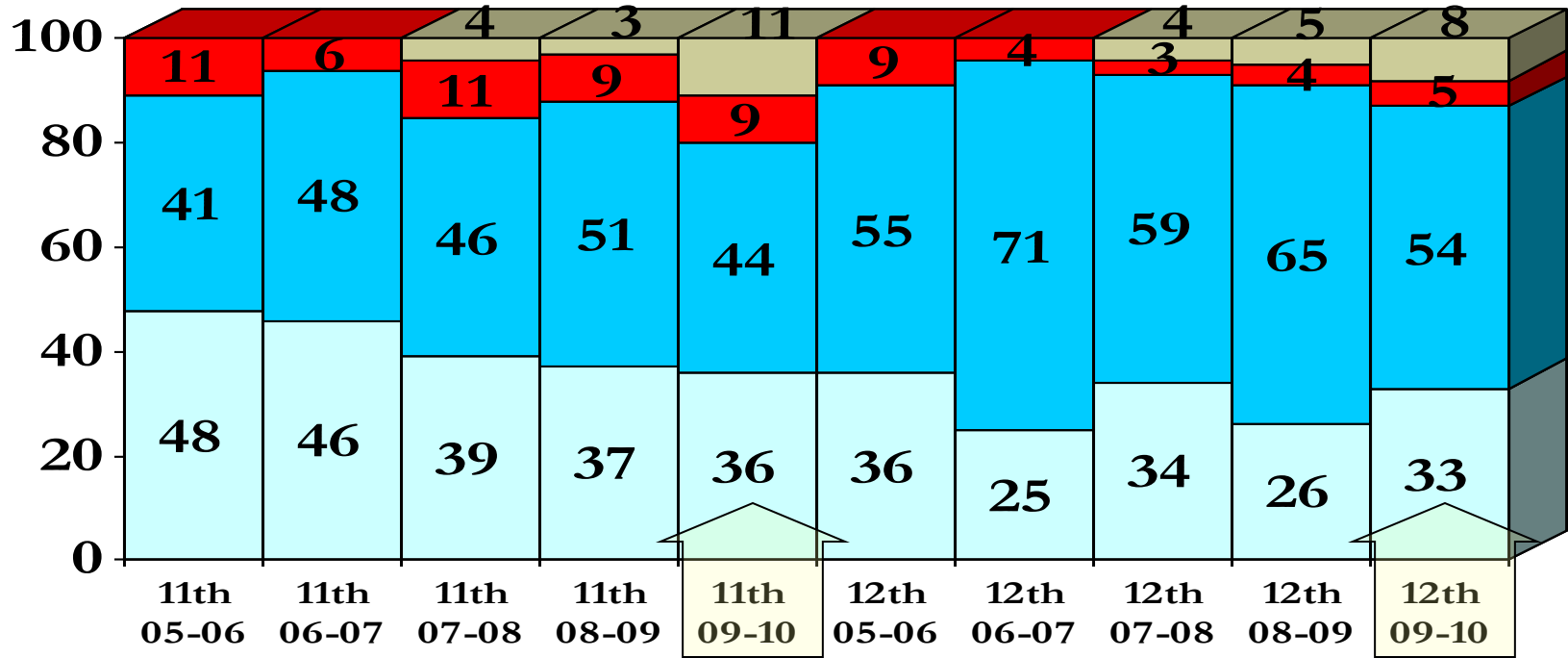
# High School Social Studies Comparison 9<sup>th</sup> & 10<sup>th</sup>

## Passing & Mastery

### 5-Year History – 3<sup>rd</sup> Quarter



# High School Social Studies Comparison 11<sup>th</sup> & 12<sup>th</sup> Passing & Mastery 5-Year History – 3<sup>rd</sup> Quarter



■ % Passing

■ % Passing with Mastery

■ % Failing

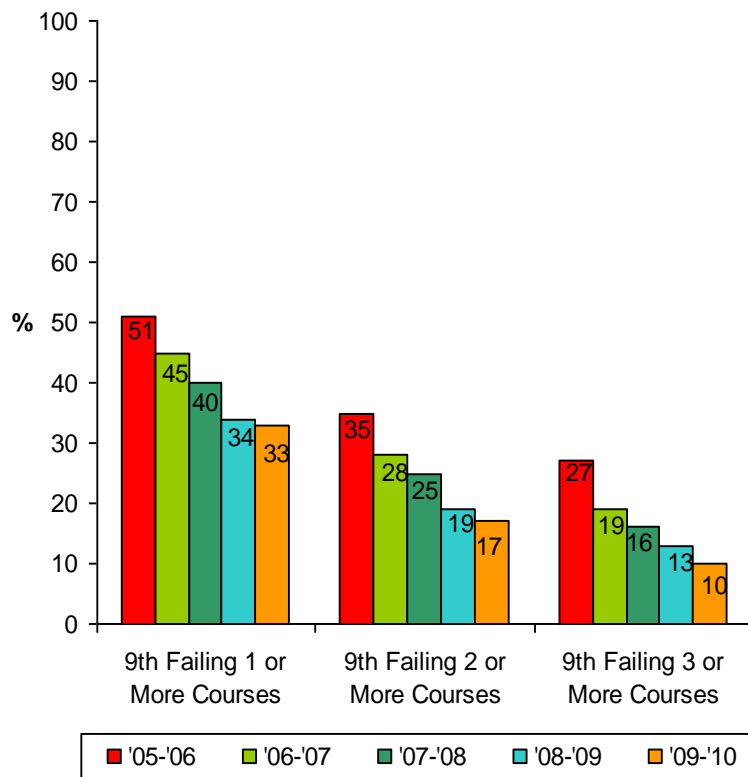
■ % Inc.

# High School Course Failure Comparison - 9<sup>th</sup> & 10<sup>th</sup>

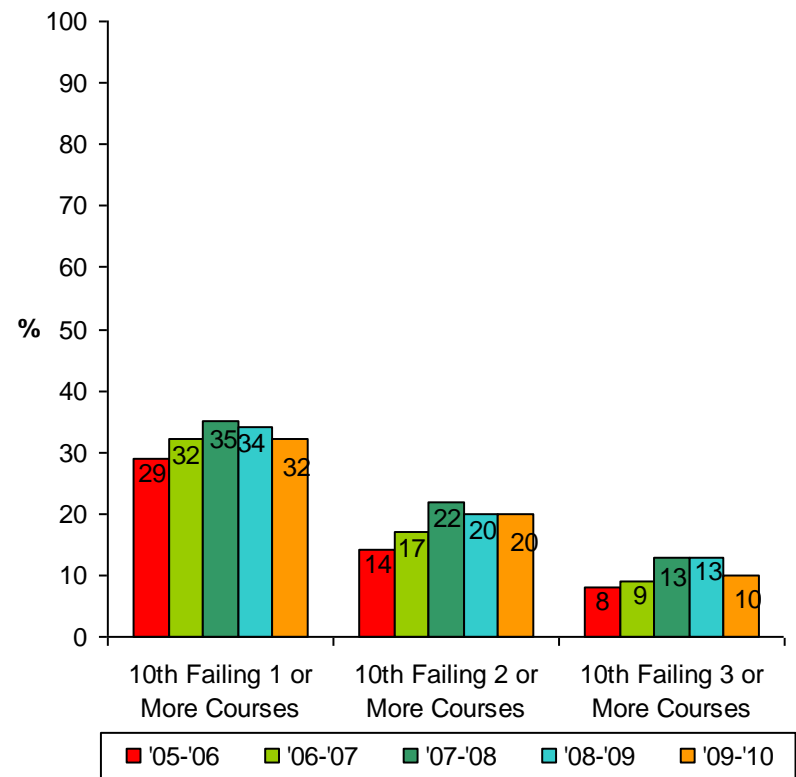
## % of Students Failing Courses

### 5-Year History – 3<sup>rd</sup> Quarter

9th Grade Student Failures



10 Grade Student Failures

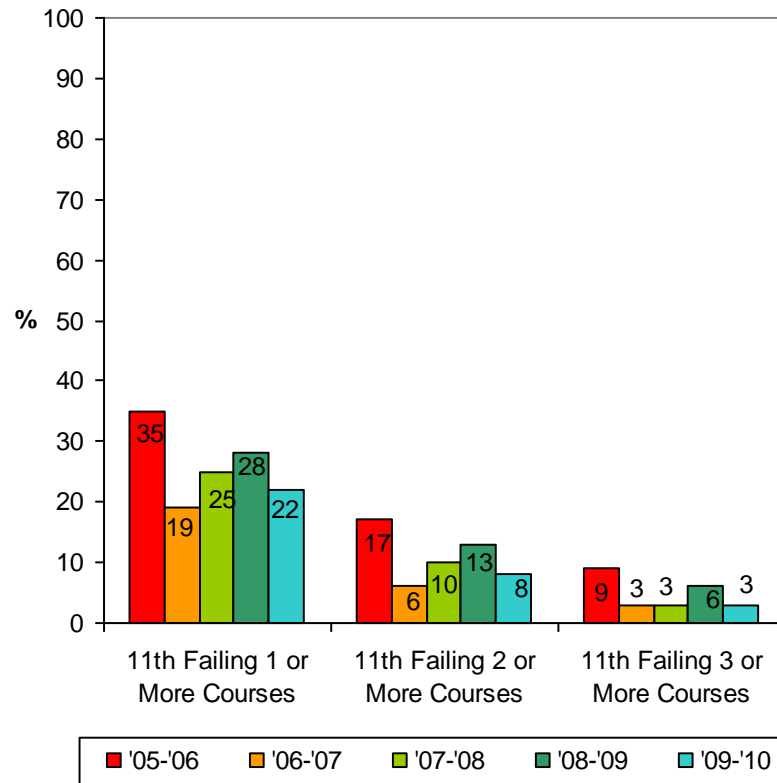


# High School Course Failure Comparison 11<sup>th</sup> & 12<sup>th</sup>

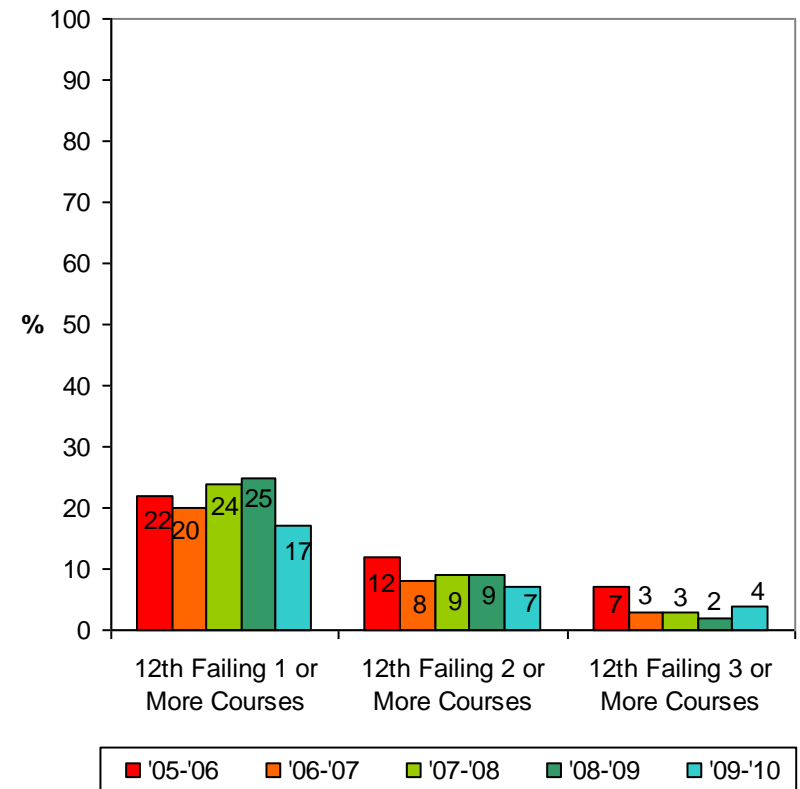
## % of Students Failing Courses

### 5-Year History – 3<sup>rd</sup> Quarter

11th Grade Student Failures

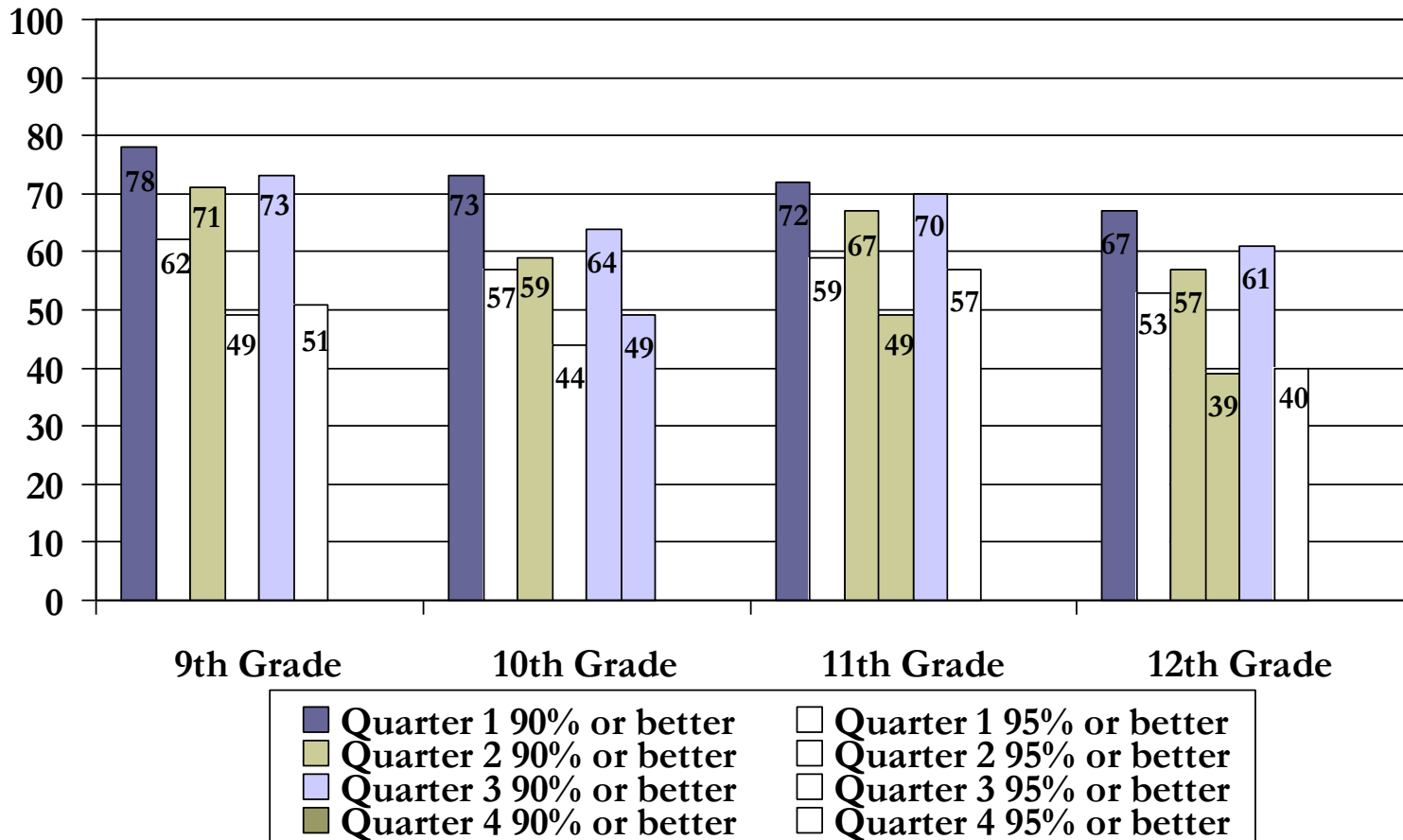


12th Grade Student Failures



# High School Attendance Comparison

## Students with High Attendance Comparison – Quarters 1– 4



# Senior Class Eligible Diploma Types

3<sup>rd</sup> Quarter 2009-10

Eligible – 203

(Includes – 2 Exchange Students)

Regents Diploma – 168 (83%)

Local Diploma – 19 (9%)

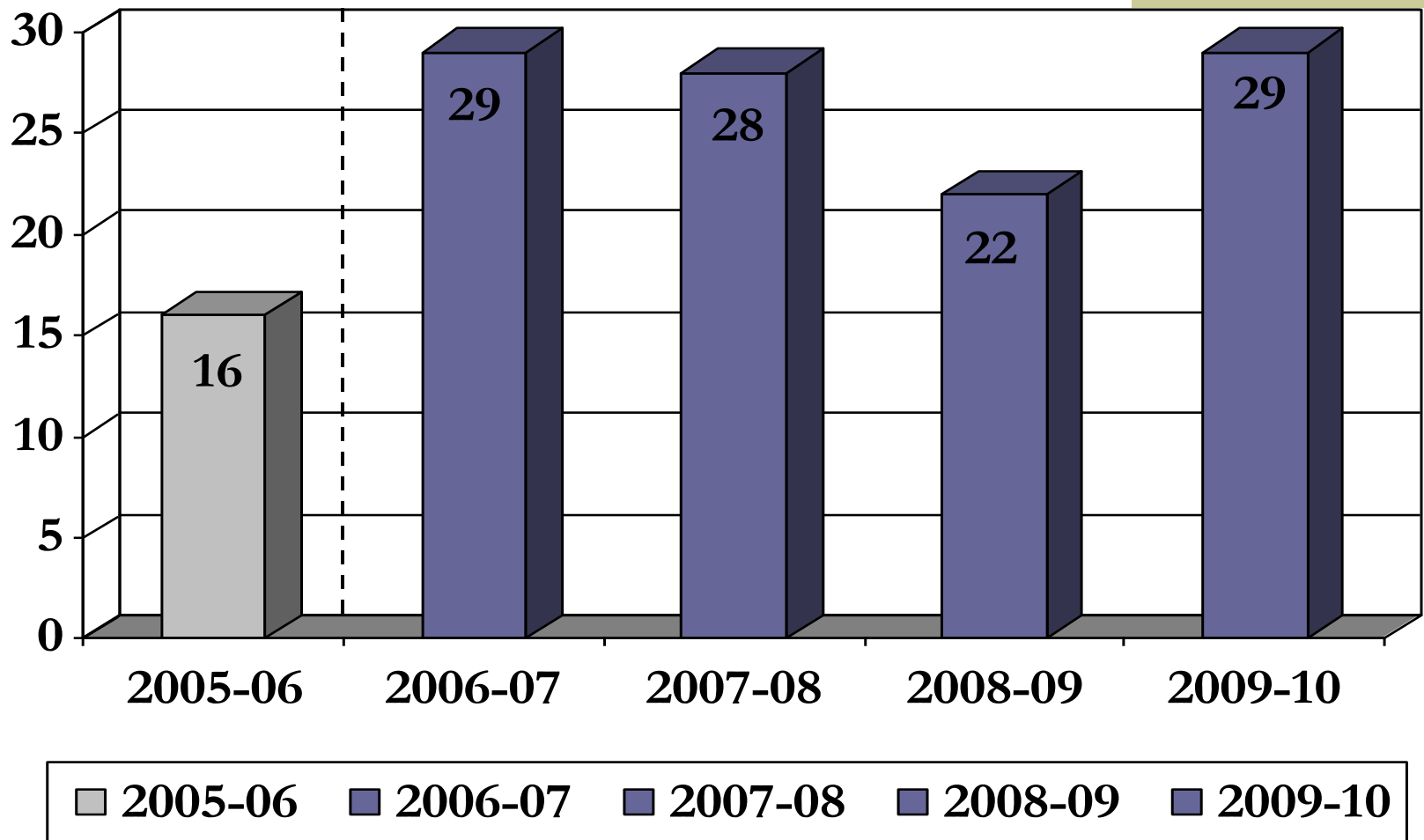
GED – 8 (4%)

IEP Diploma – 6 (3%)

Certificate of Attendance (Exchange Students) (1%)

# High School Drop-out Comparison

# of students dropping out by end of 3<sup>rd</sup> Quarter  
5-Year History



# High School Conclusions

## 2009-10 –3<sup>rd</sup> Quarter

---

- Our failure rates are up and down—on balance, about the same
- We have 74% of all JSHS students passing all of their courses compared to 61% last year at this time.
- Administrators and Department Leaders will be working especially hard with those students failing just one or two courses