

Cortland Enlarged City School District

Quarterly Academic Progress Report

March 9, 2010

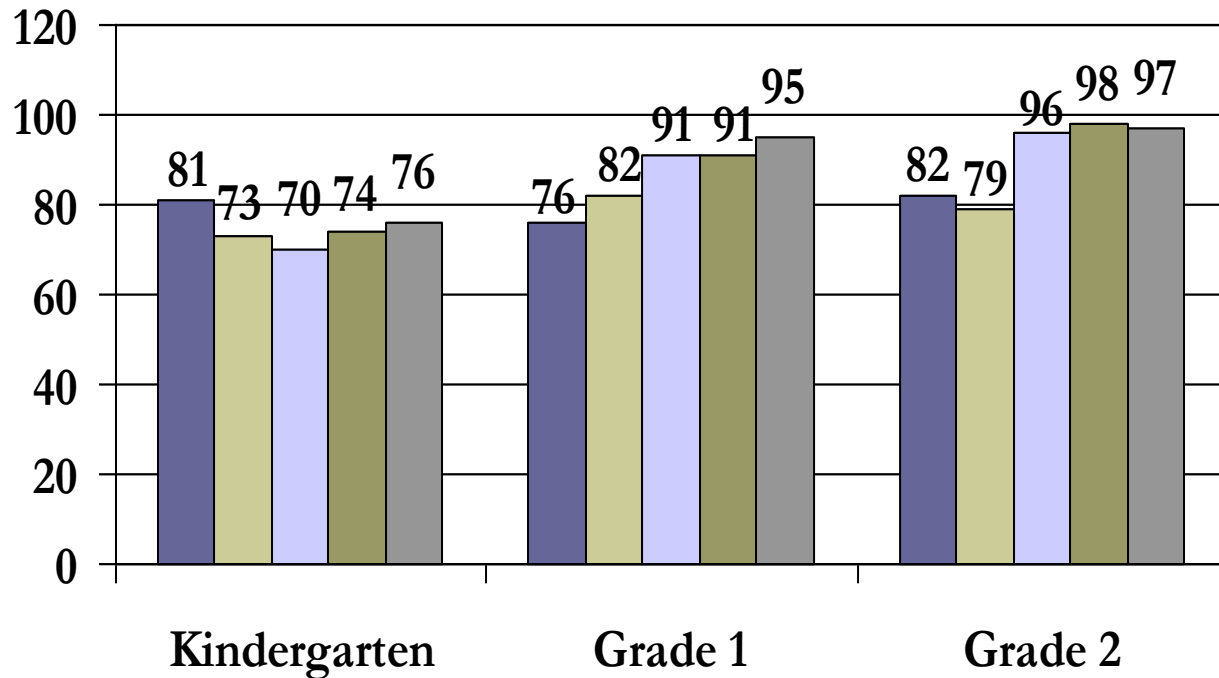
Laurence T. Spring, Superintendent

Cortland Enlarged City School District

Quarterly Academic Progress Report 2009-2010 Second Quarter Results

Elementary Literacy

Percentage of Students Demonstrating Adequate Progress
in Literacy Grade Level Standards
5-Year History – 2nd Quarter



05-06 ELA

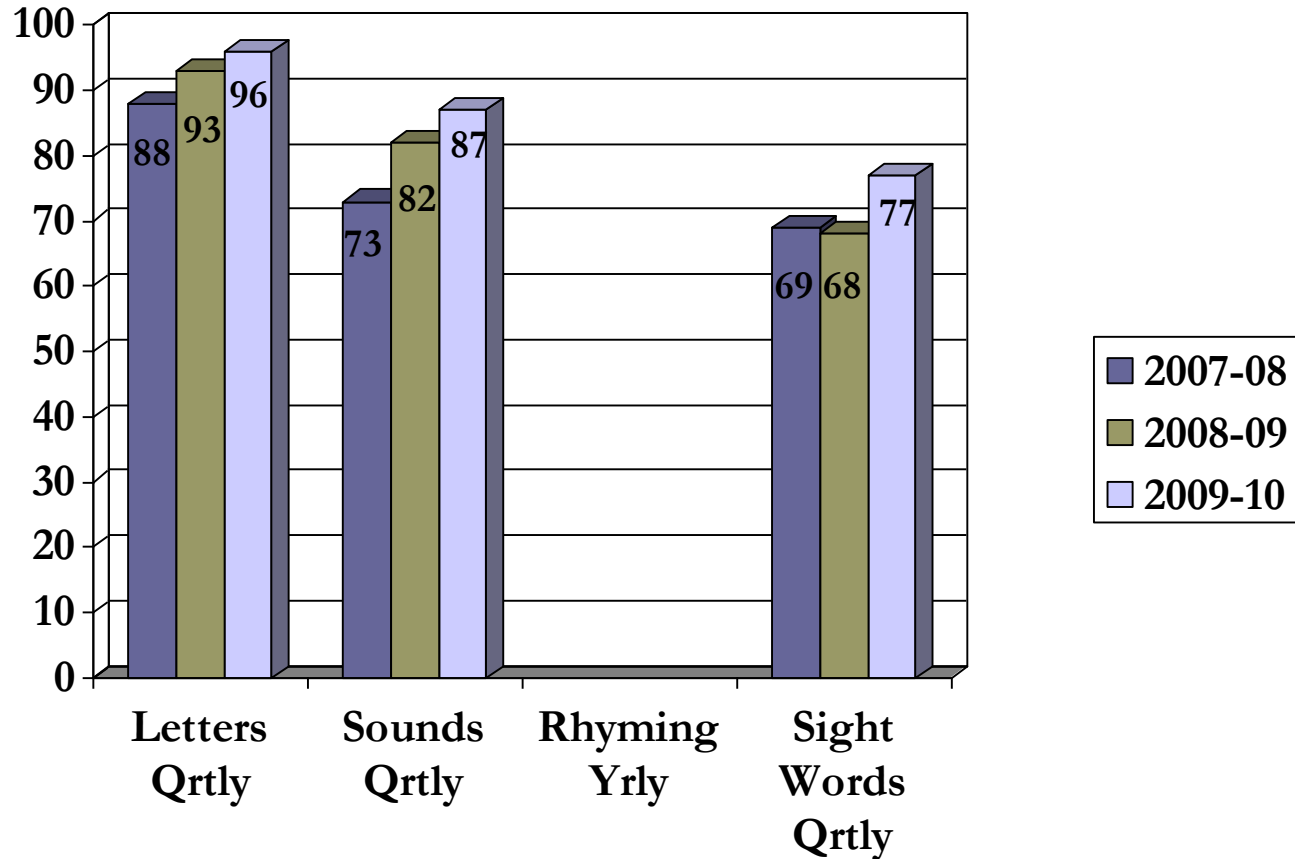
06-07 ELA

07-08 ELA

08-09 ELA

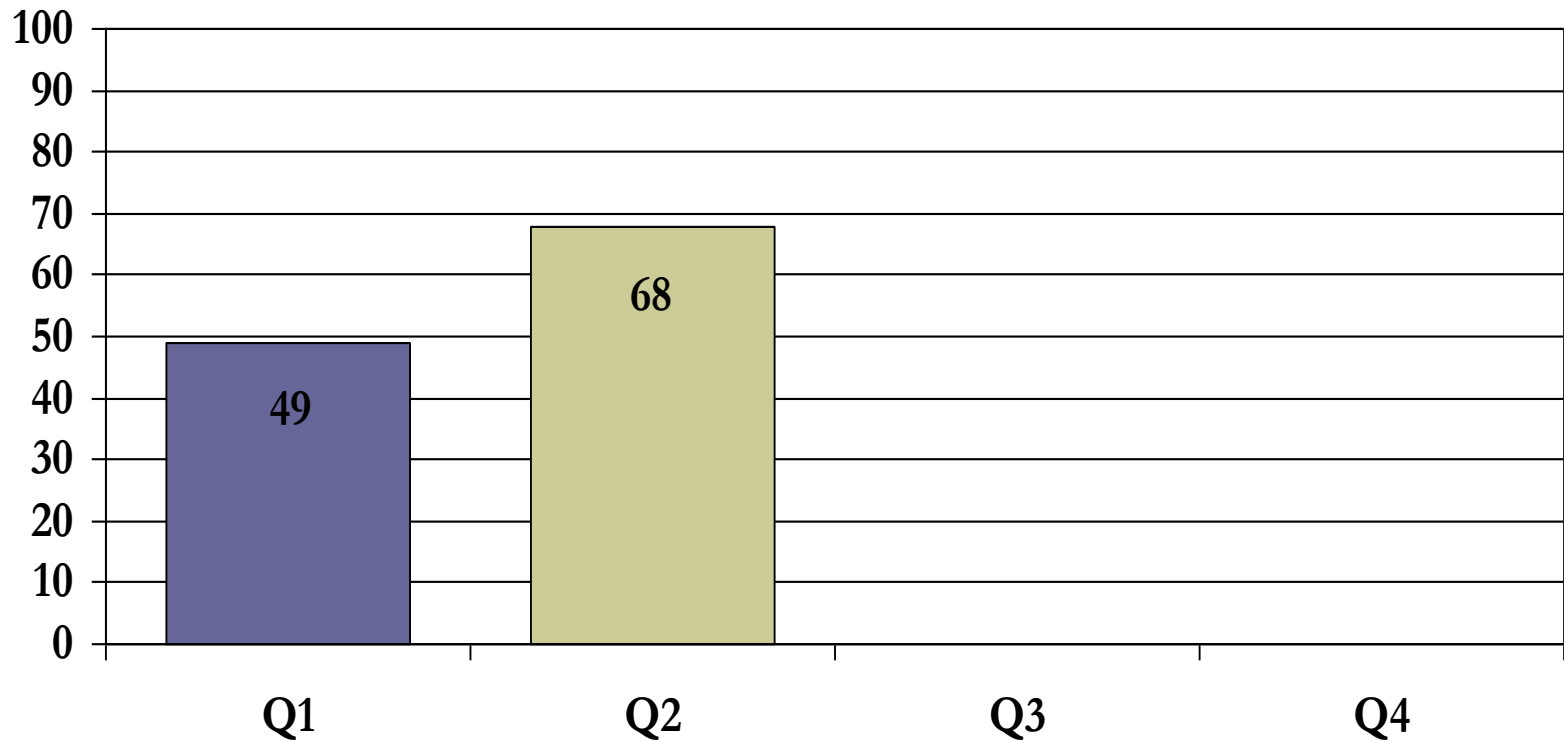
09-10 ELA

Percentage of Kindergarten Students Achieving Expected Quarterly / Yearly Proficiencies



1st Grade DRA

2nd Quarter



■ Q1 Goal - 6 or >

■ Q2 Goal - 8 or >

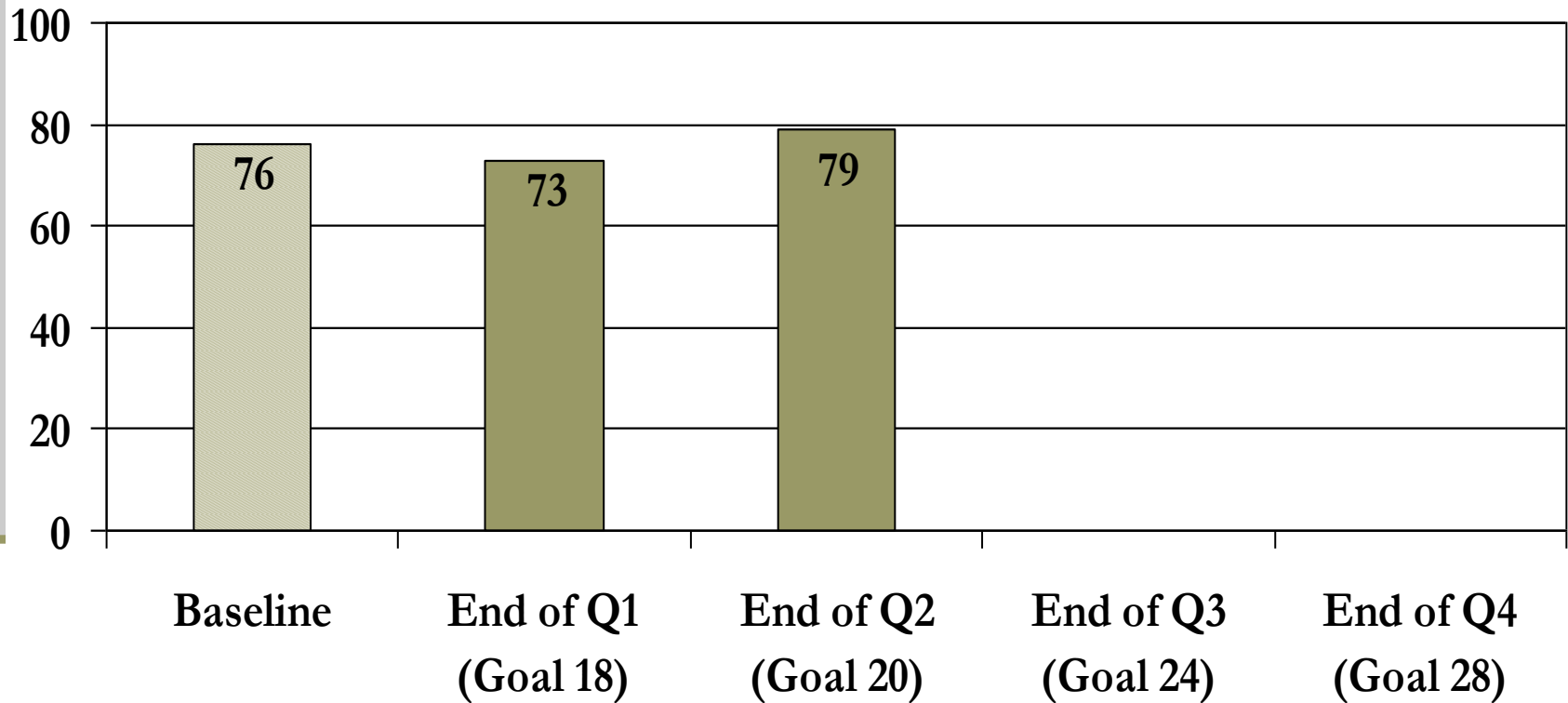
■ Q3 Goal - 12 or >

■ Q4 Goal - 16 or >

2nd Graders

% Meeting Reading & Writing Benchmarks

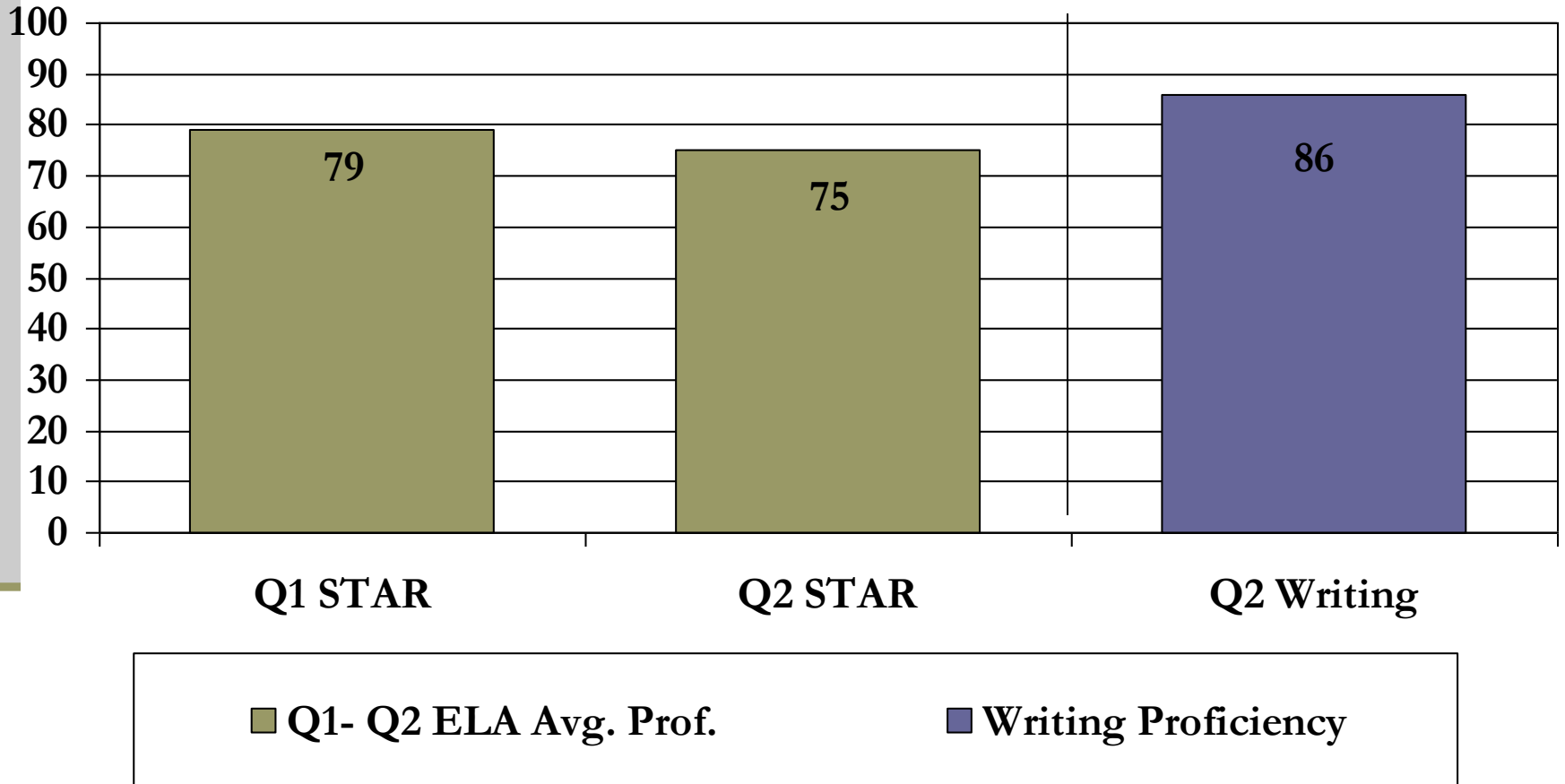
2nd Quarter



3rd Graders

% Meeting Reading & Writing Benchmarks

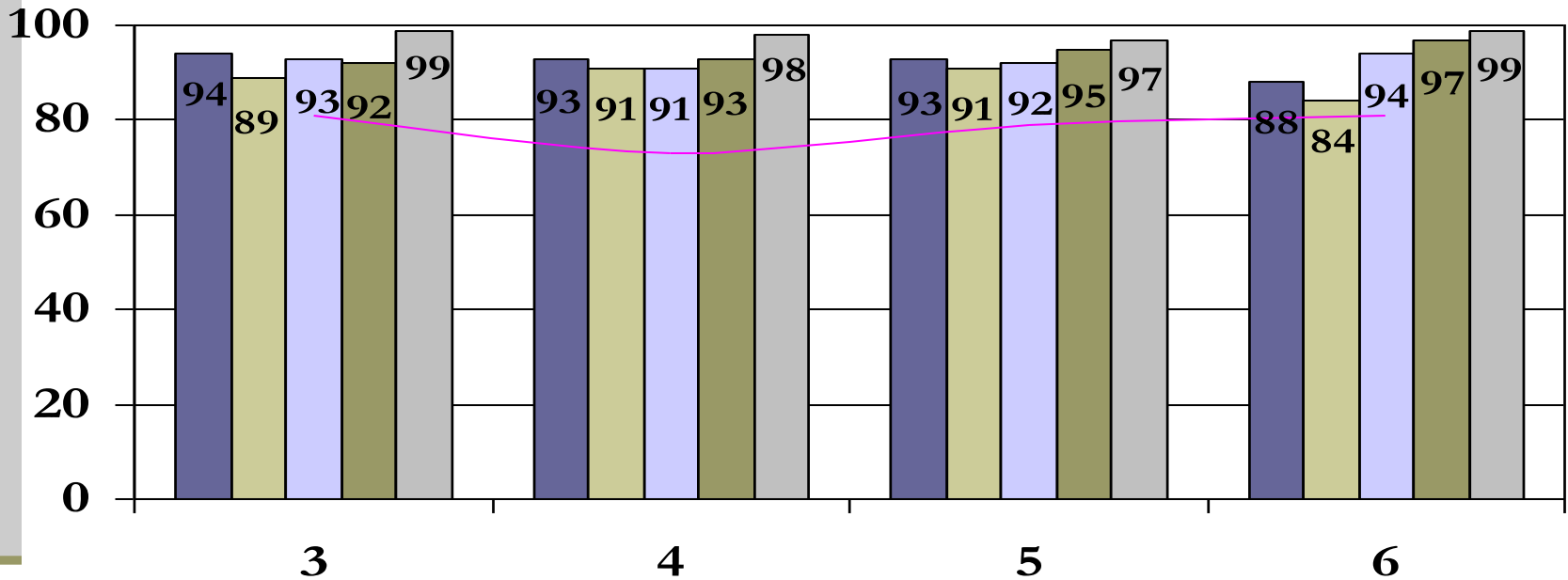
2nd Quarter



Elementary Literacy

Upper Grades Adequate Progress Comparison

5-Year History - 2nd Quarter

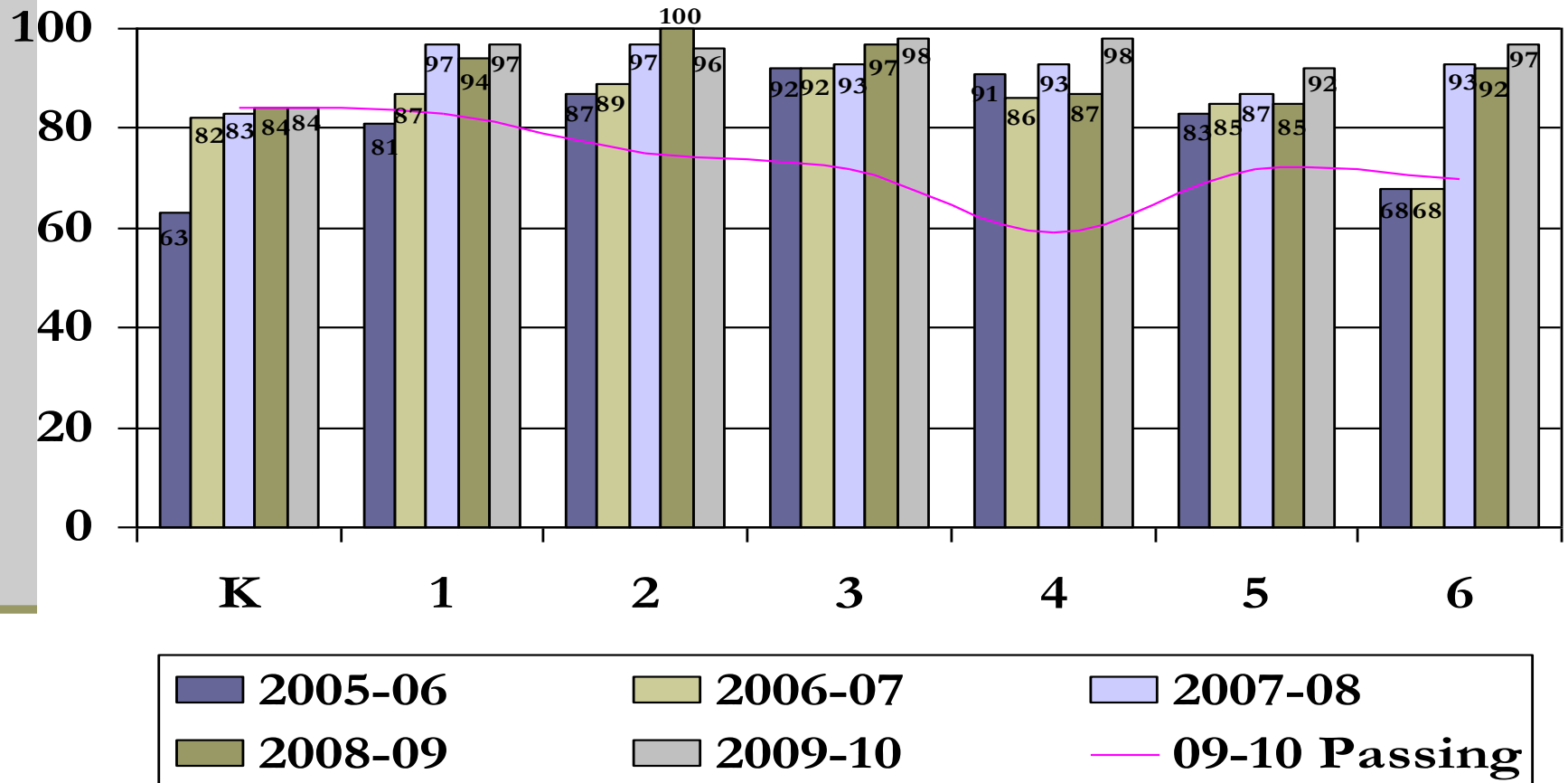


2005-06 ELA 2006-07 ELA 2007-08 ELA
2008-09 ELA 2009-10 ELA 09-10 Passing

Elementary Numeracy & Mathematics

Adequate Progress Comparison

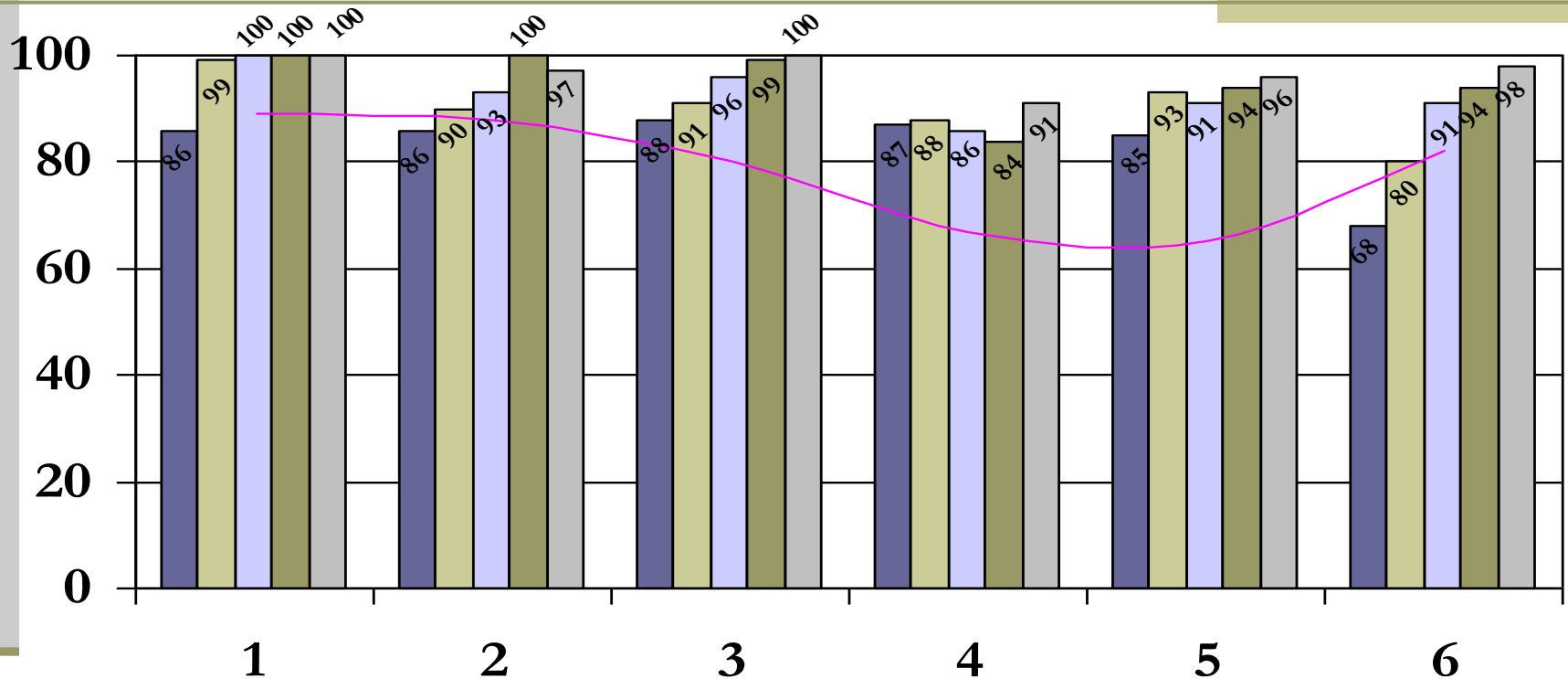
5-Year History - 2nd Quarter



Elementary Social Studies

Adequate Progress Comparison

5-Year History - 2nd Quarter



2005-06

2006-07

2007-08

2008-09

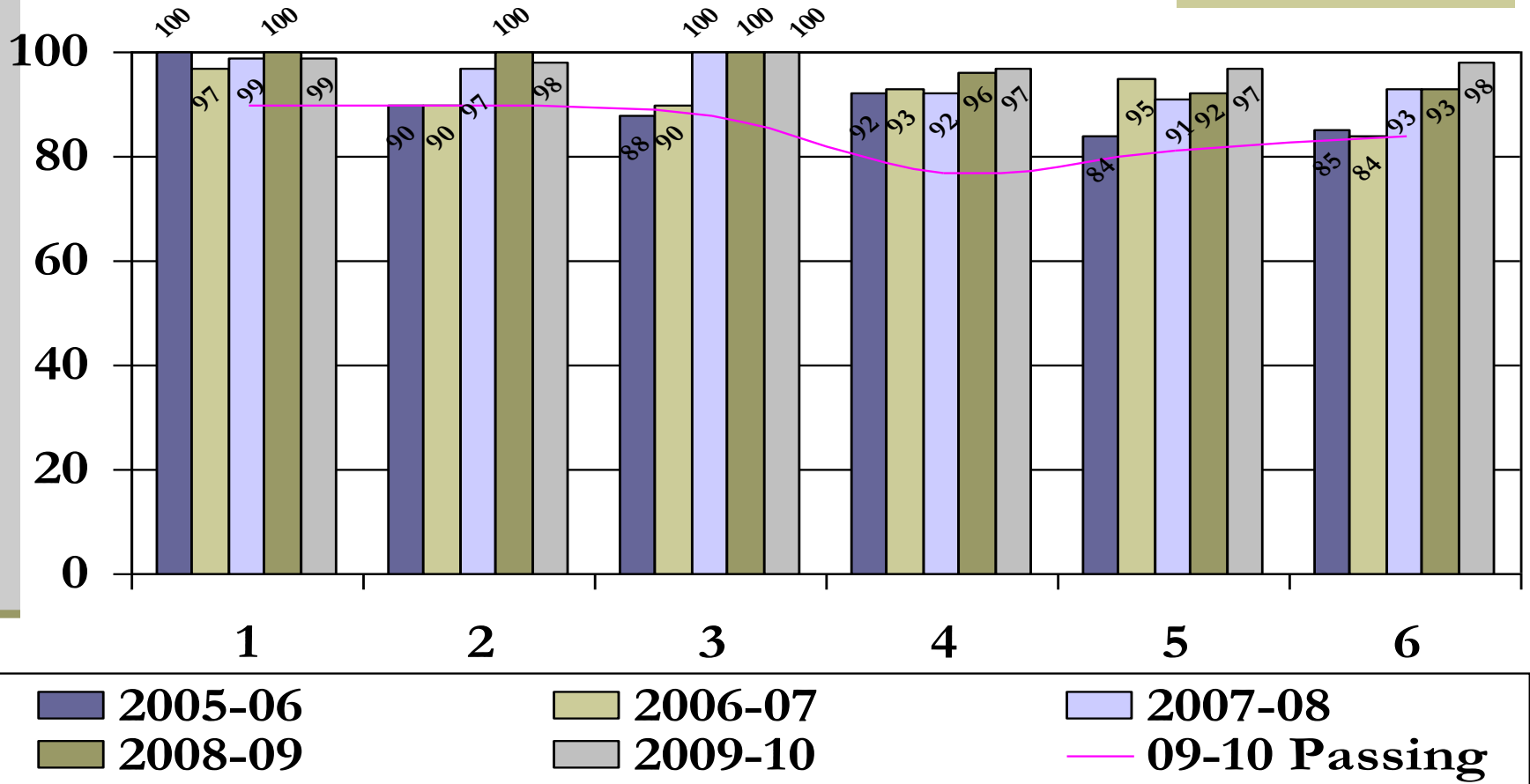
2009-10

09-10 Passing

Elementary Science & Health

Adequate Progress Comparison

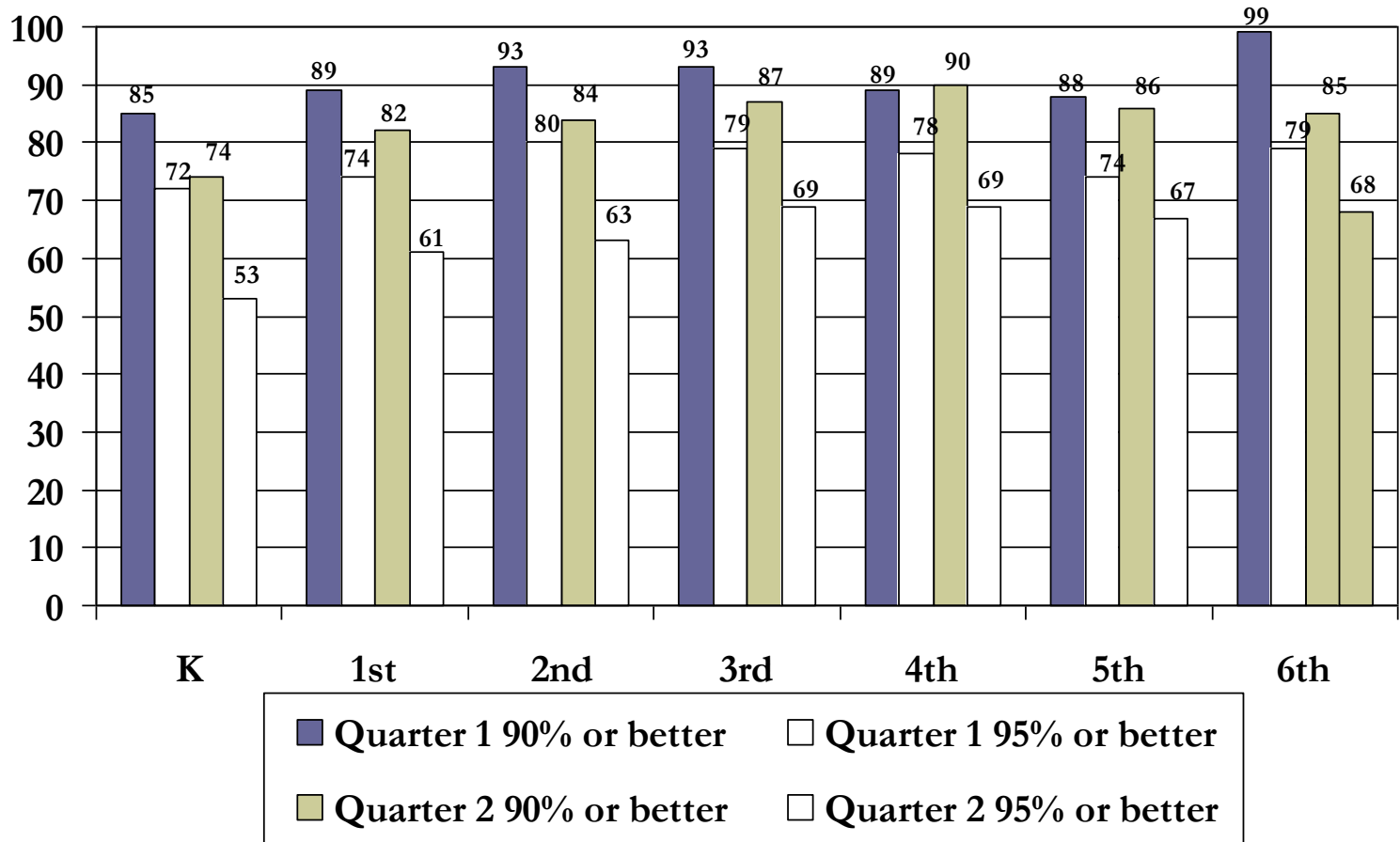
5-Year History - 2nd Quarter



Elementary Attendance

Percentage of Students with High Attendance

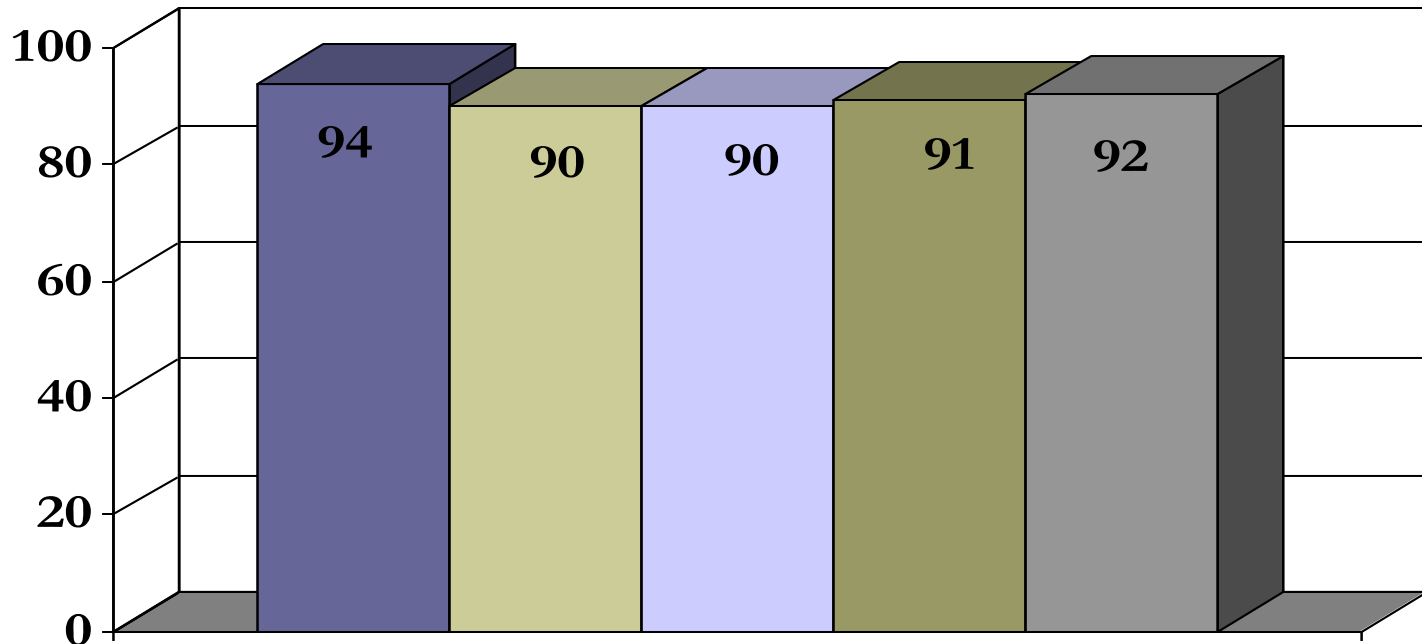
2nd Quarter



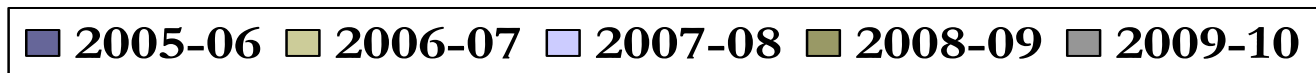
Elementary Social Studies State Testing

Adequate Progress Comparison

5-Year History – 2nd Quarter



5th grade Social Studies State Scores



Elementary Conclusions

2009–2010 - 2nd Quarter

- Reports are provided electronically to administrators, and all teachers
- A new trend with upper elementary grades has emerged that reverses the previous trend of academic “drop-off” in the upper grades
- Attendance rates continue to be a concern
- With a growing familiarity and new detail to data, buildings and grade levels apply the data by:
 - Identifying at-risk students earlier and more accurately with common assessments to focus efforts and resources for interventions
 - Engaging in discussions in grade levels, staff meetings etc. based on accurate, common student assessments
 - Reinforcing prior “gut feelings” with objective reinforcement and assessments that target specific issues
 - Support through IST

Academic Progress Report

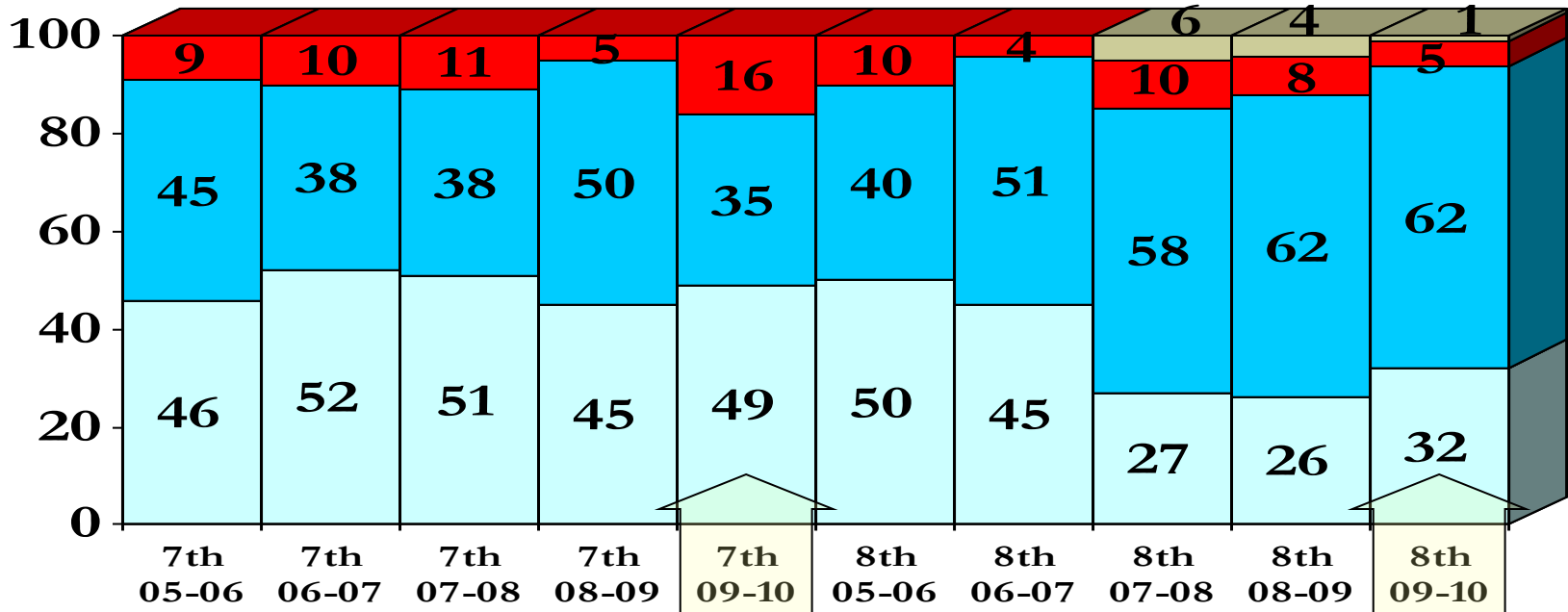
Grades 7 & 8

- In the Junior High, students successfully completing core courses along with attendance trends begin to give us a picture of academic success for the year.
- Academic reports also indicate the percentage of students that have reached mastery in a core subject area (85% or higher).
- Data from the second quarter of the last three years is included for reference.

Junior High School ELA Comparison

Passing & Mastery

5-Year History - 2nd Quarter



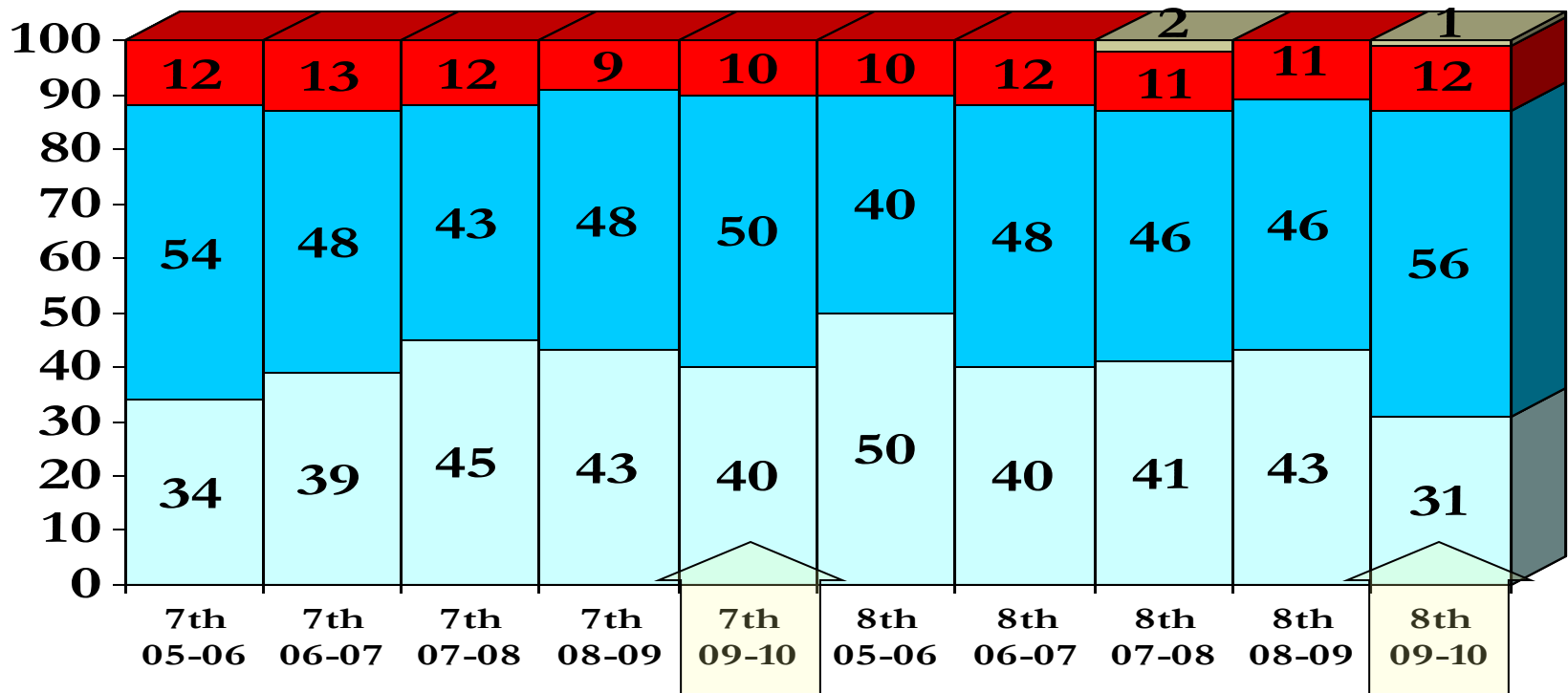
■ % Passing
■ % Failing

■ % Passing with Mastery
■ % Inc.

Junior High School Math Comparison

Passing & Mastery

5-Year History - 2nd Quarter

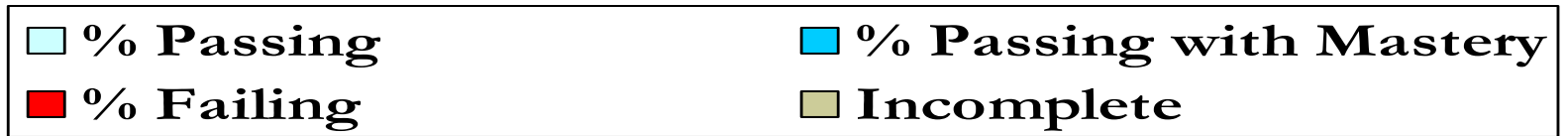
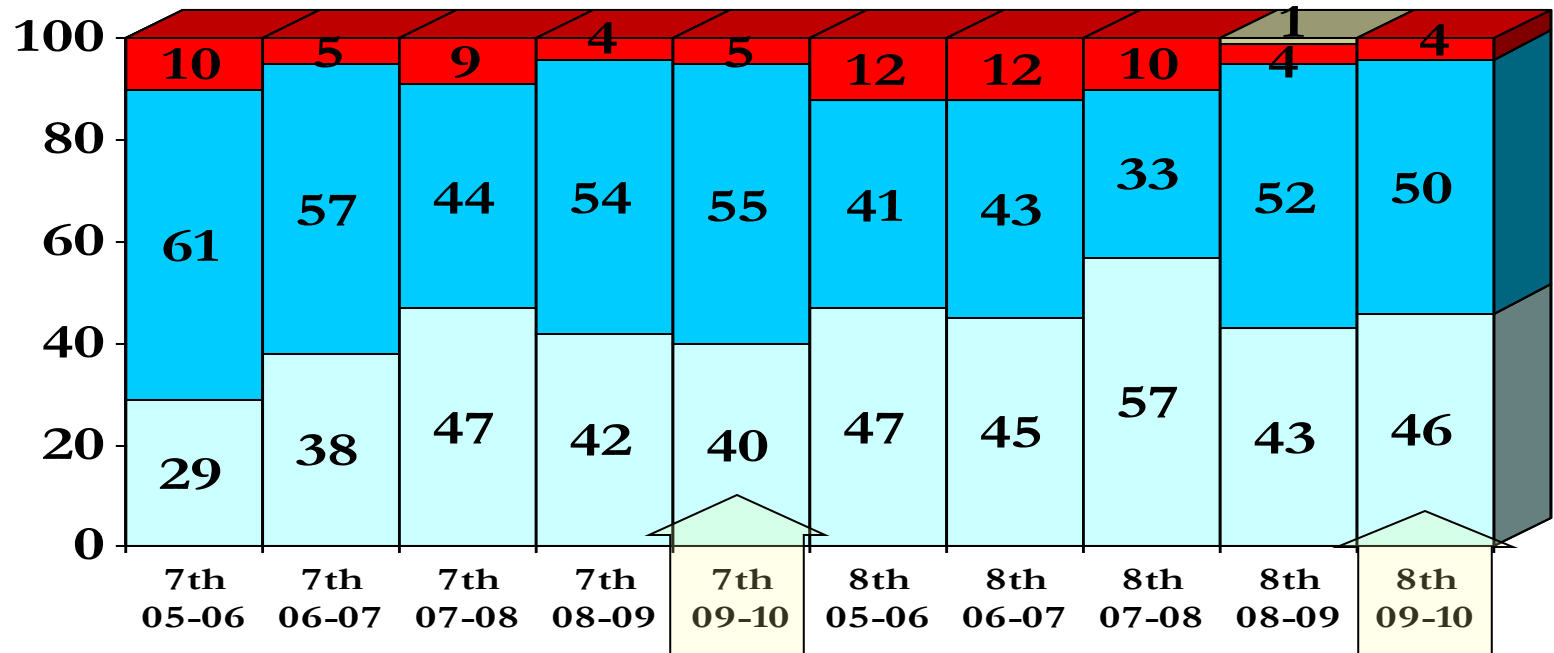


■ % Passing
 ■ % Passing with Mastery
 ■ % Failing
 ■ Inc %

Junior High School Science Comparison

Passing & Mastery

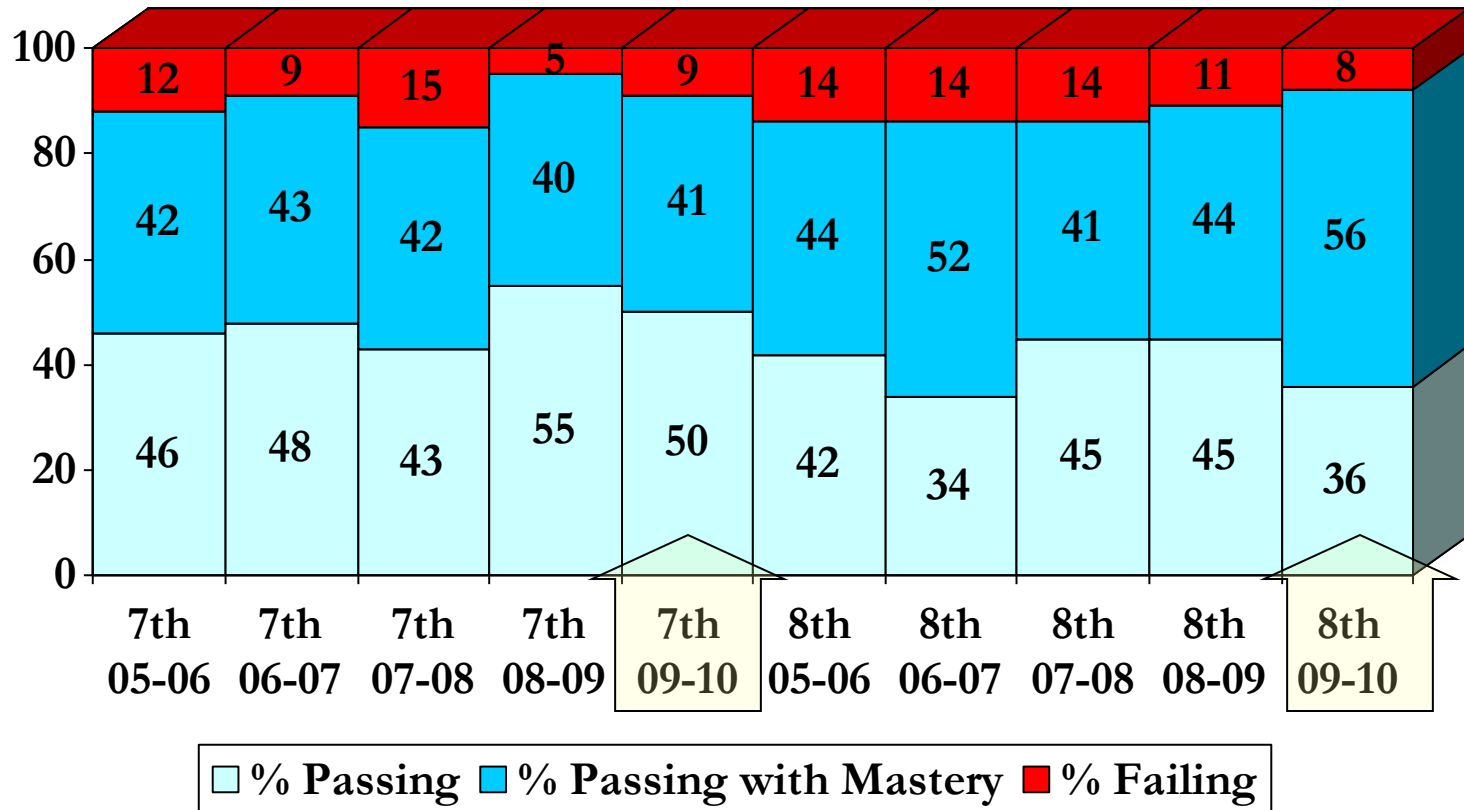
5-Year History - 2nd Quarter



Junior High School Social Studies Comparison

Passing & Mastery

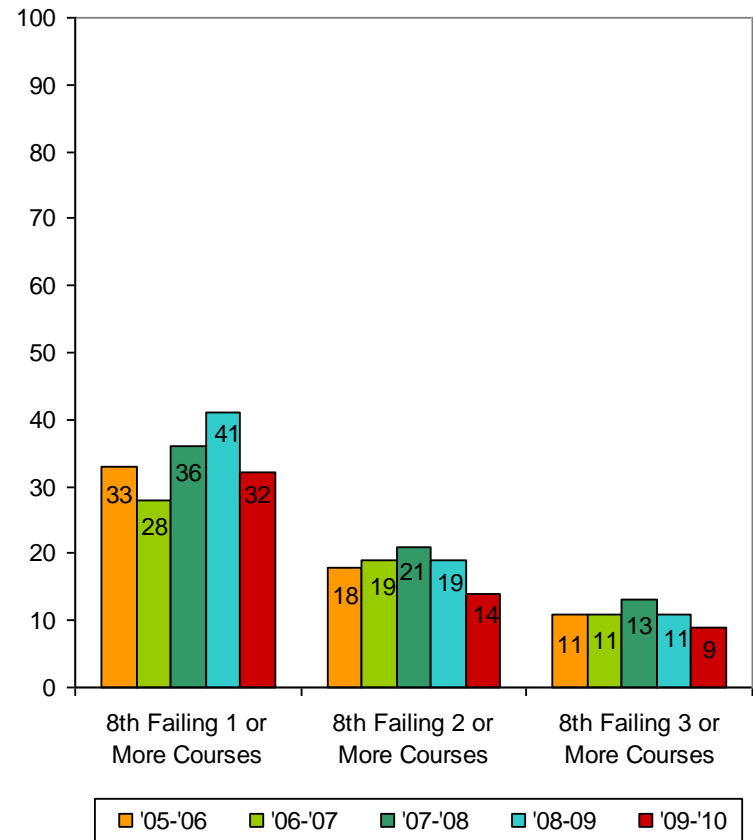
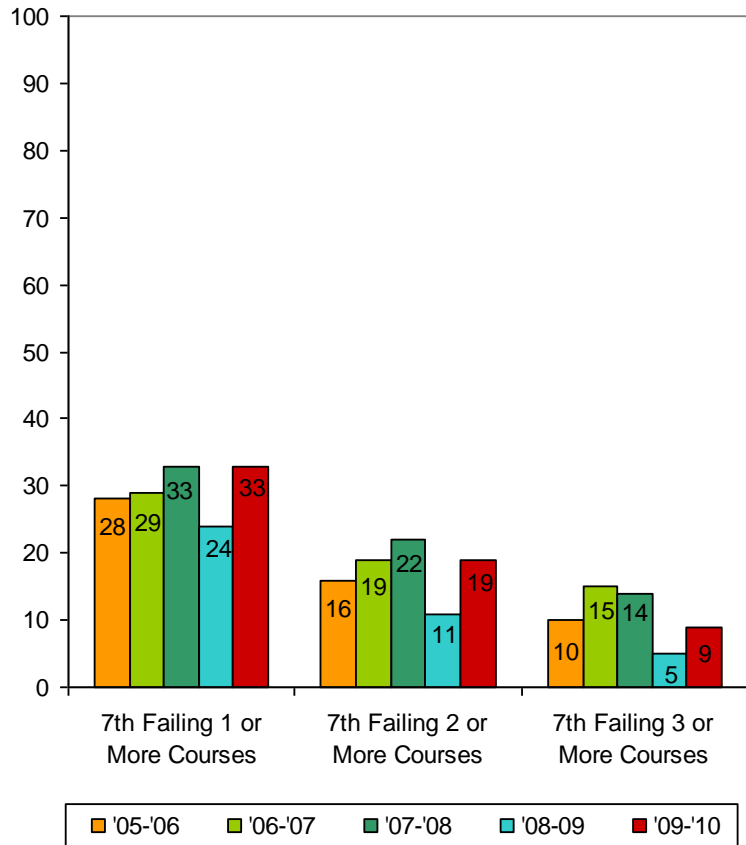
5-Year History - 2nd Quarter



Junior High Course Failure Comparison

% of Students Failing Courses

5-Year History - 2nd Quarter



Junior High Conclusions

2009–2010 - 2nd Quarter

- Junior High administration will be looking at failure rates with special attention to the 7th grade.
- There are some particular areas where we see failure spikes and we need to do more investigation in these areas.
- Of great concern is the dramatic increase in the number of 7th grade students who are failing courses.

Academic Progress Report

Grades 9 - 12

- The following data is from core high school academic courses, overall passing levels on courses by grade level, and general trends in attendance

Marking Period 2

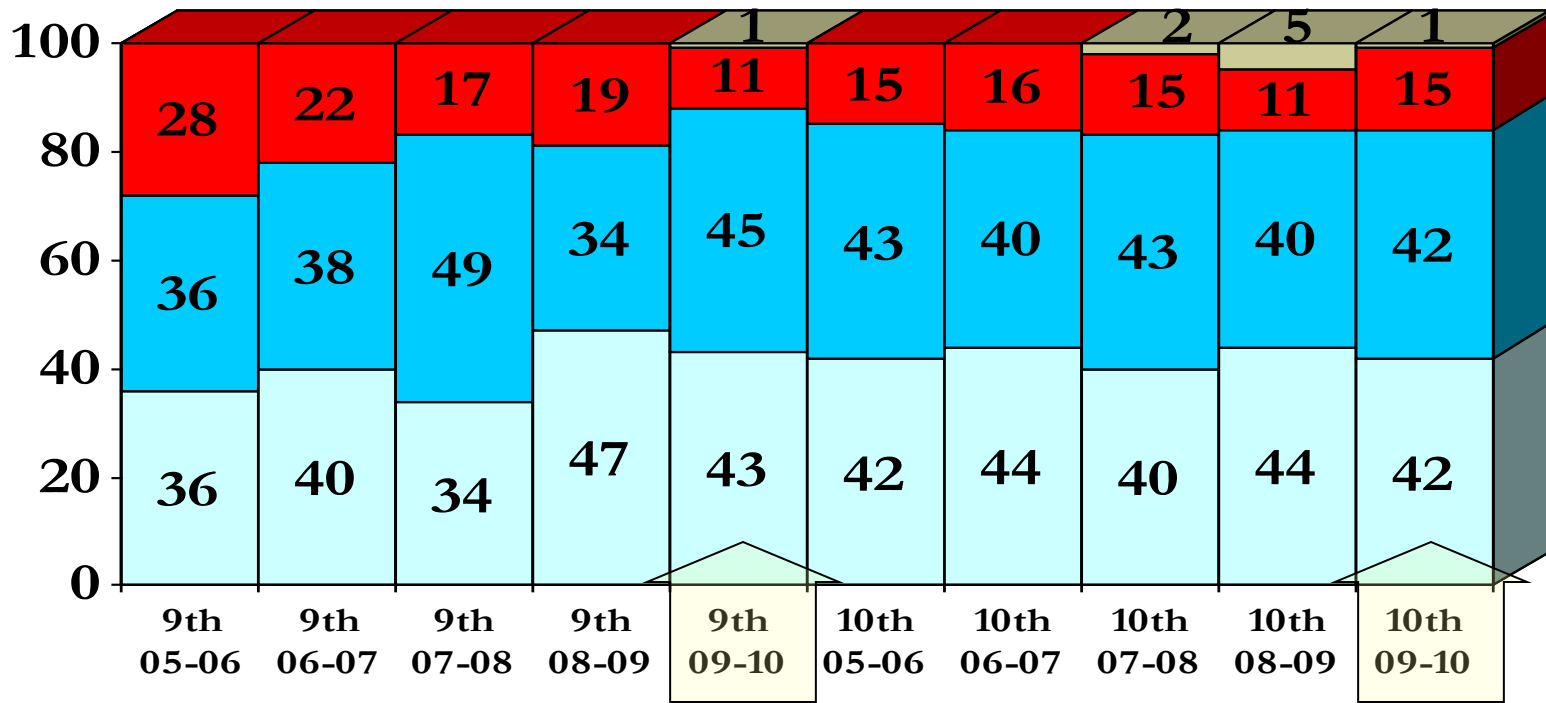
English

Language Arts

High School ELA Comparison 9th & 10th

Passing & Mastery

5-Year History - 2nd Quarter



□ % Passing

■ % Passing with Mastery

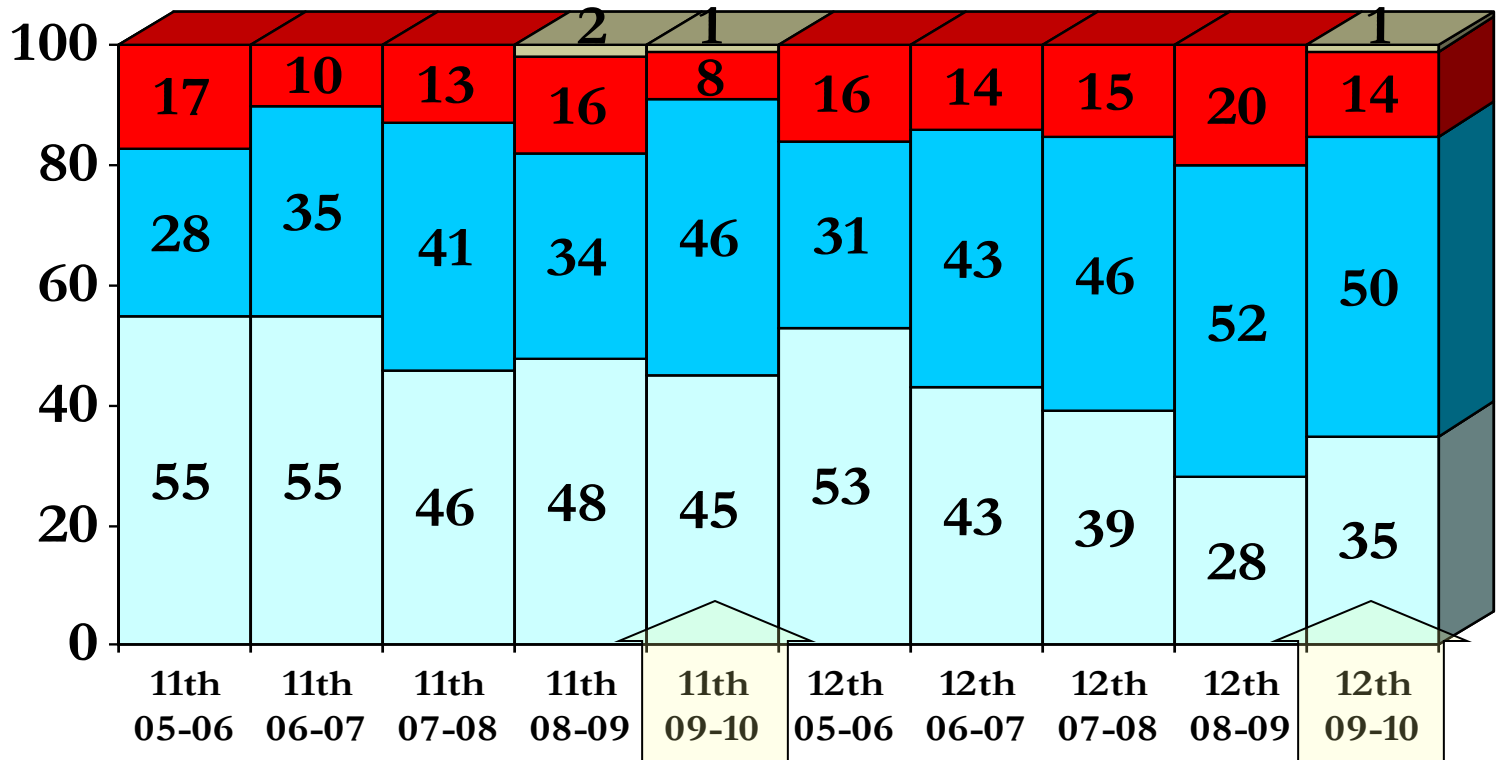
■ % Failing

■ % Incomplete

High School ELA Comparison 11th & 12th

Passing & Mastery

5-Year History - 2nd Quarter



■ % Passing

■ % Passing with Mastery

■ % Failing

■ Incomplete

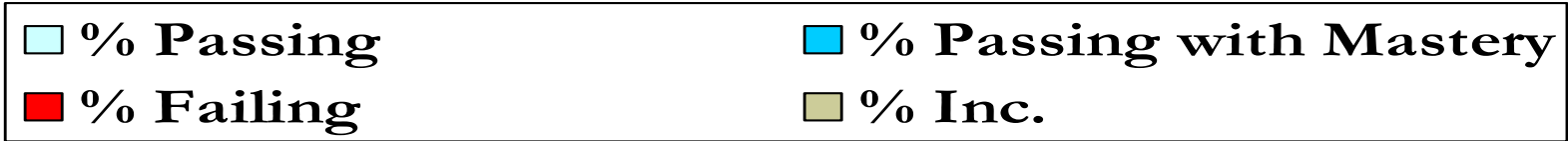
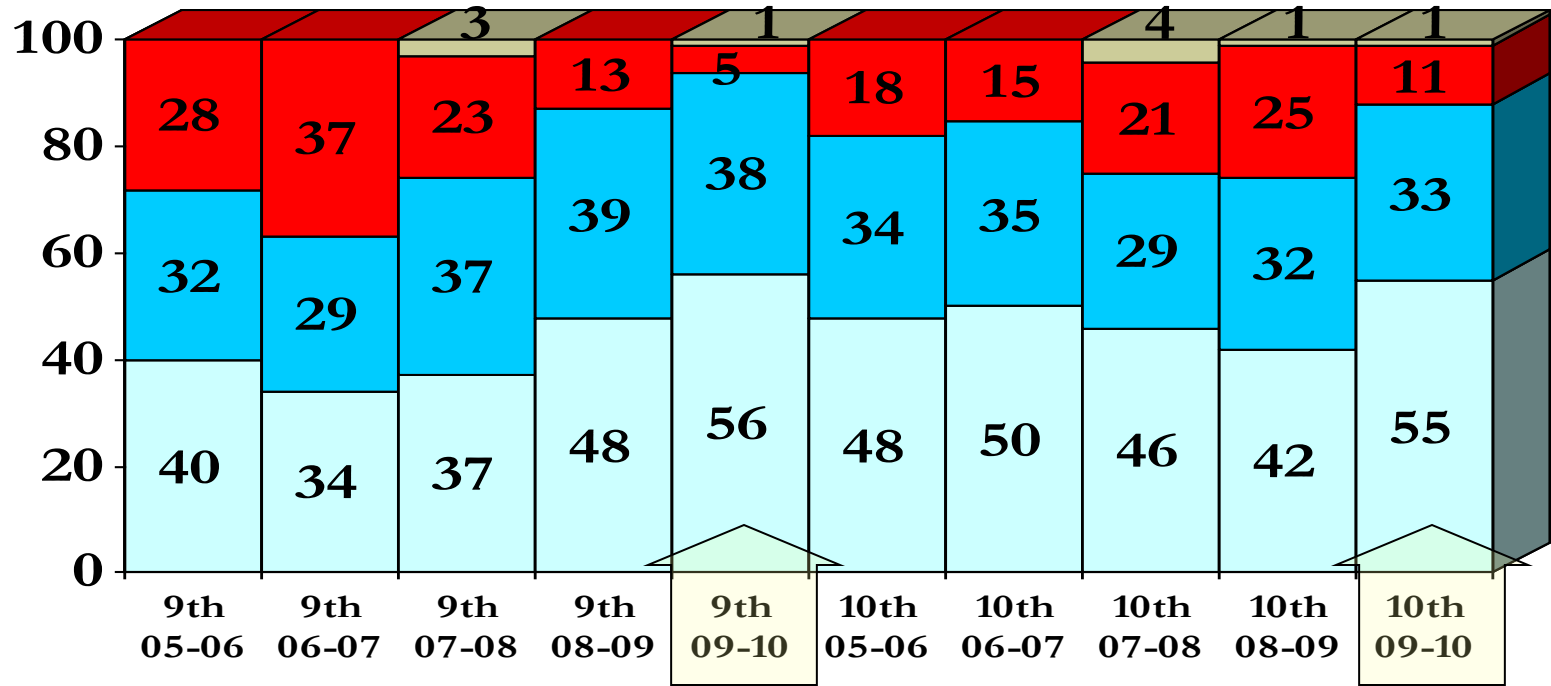
Marking Period 2

Math

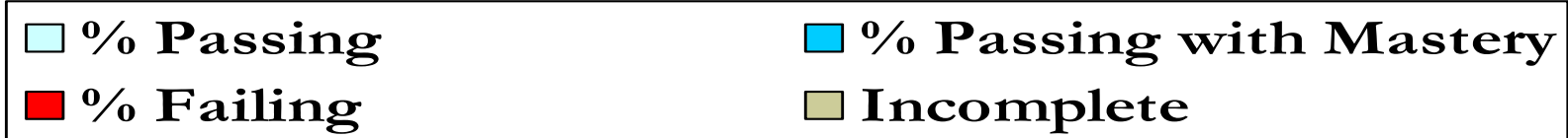
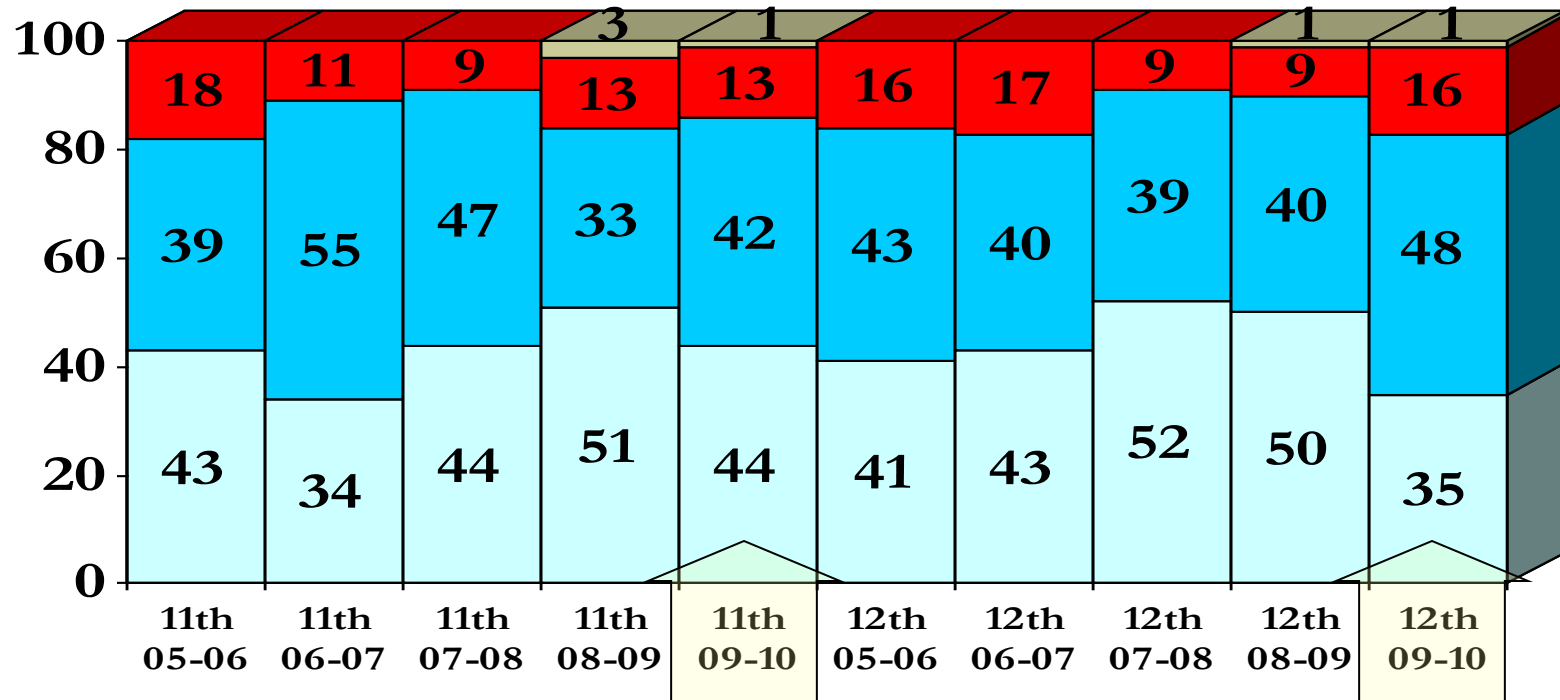
High School Math Comparison 9th & 10th

Passing & Mastery

5-Year History - 2nd Quarter



High School Math Comparison 11th & 12th Passing & Mastery 5-Year History



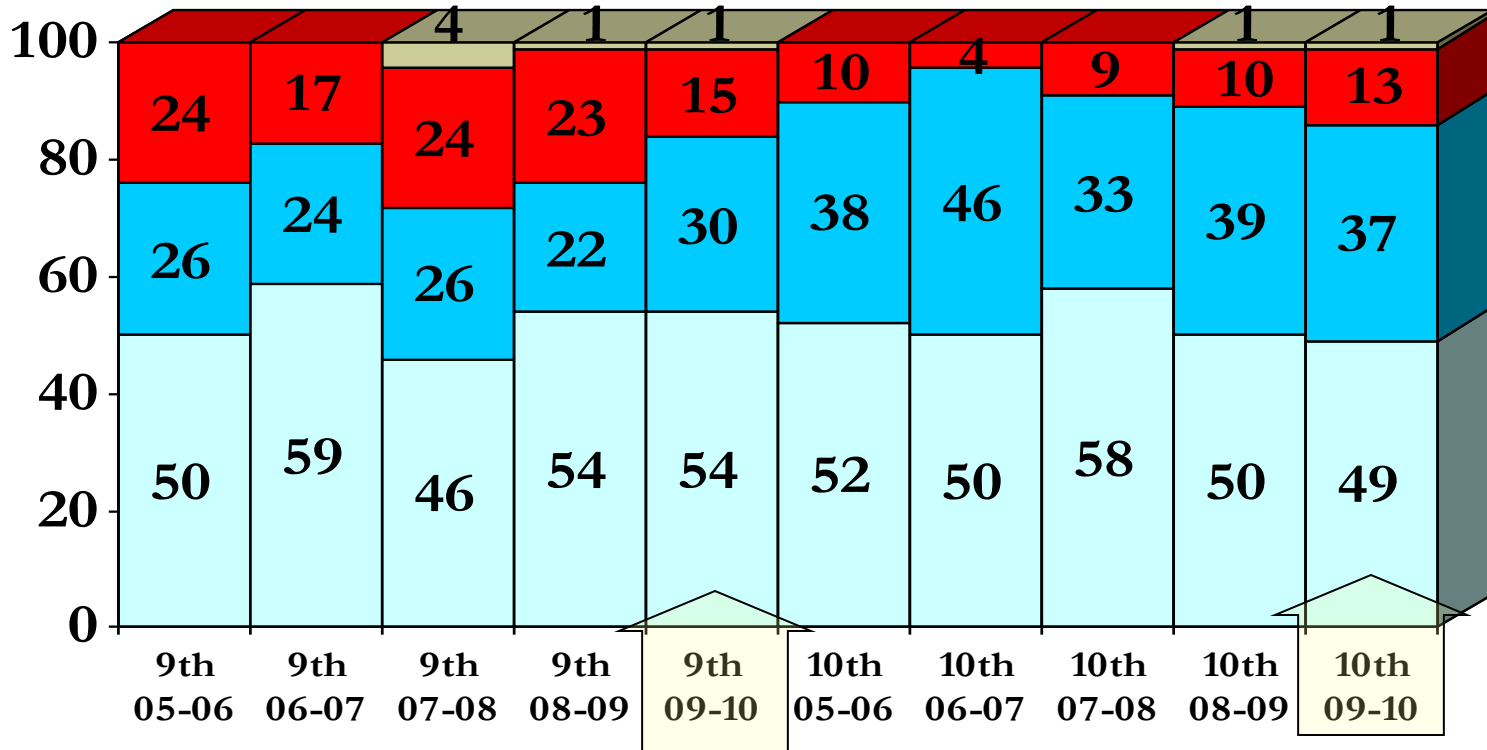
Marking Period 2

Science

High School Science Comparison 9th & 10th

Passing & Mastery

5-Year History - 2nd Quarter



□ % Passing

■ % Failing

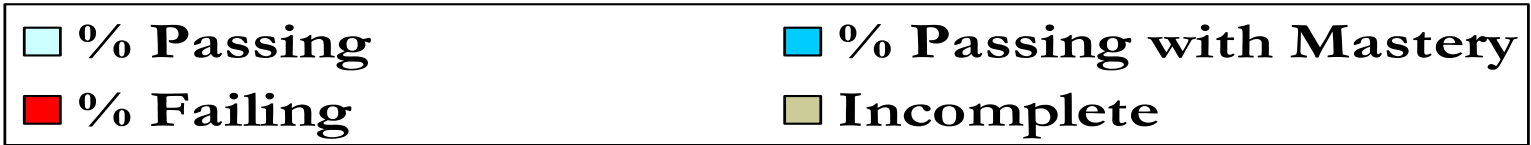
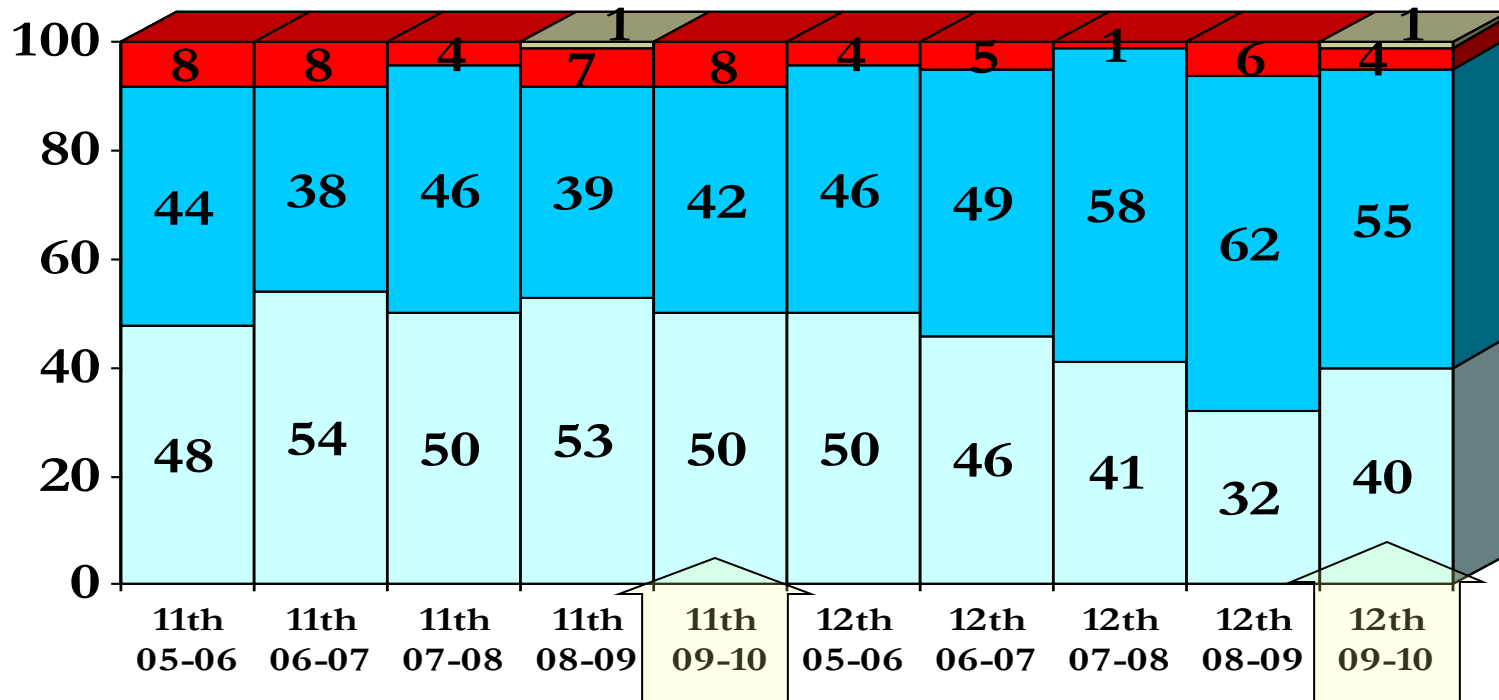
■ % Passing with Mastery

■ % Incomplete

High School Science Comparison 11th & 12th

Passing & Mastery

5-Year History - 2nd Quarter



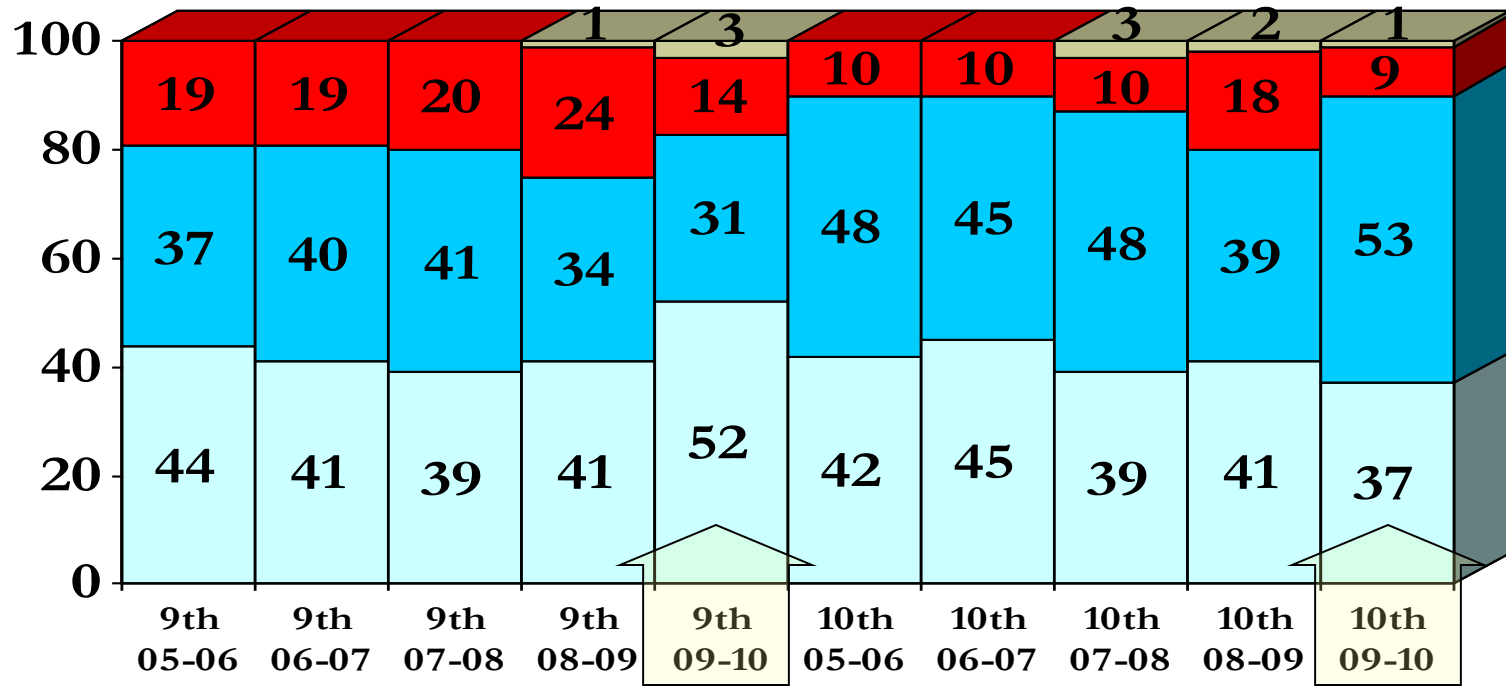
Marking Period 2

Social Studies

High School Social Studies Comparison 9th & 10th

Passing & Mastery

5-Year History - 2nd Quarter



■ % Passing

■ % Passing with Mastery

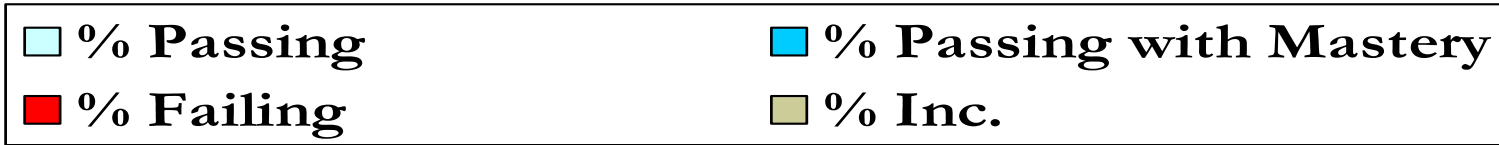
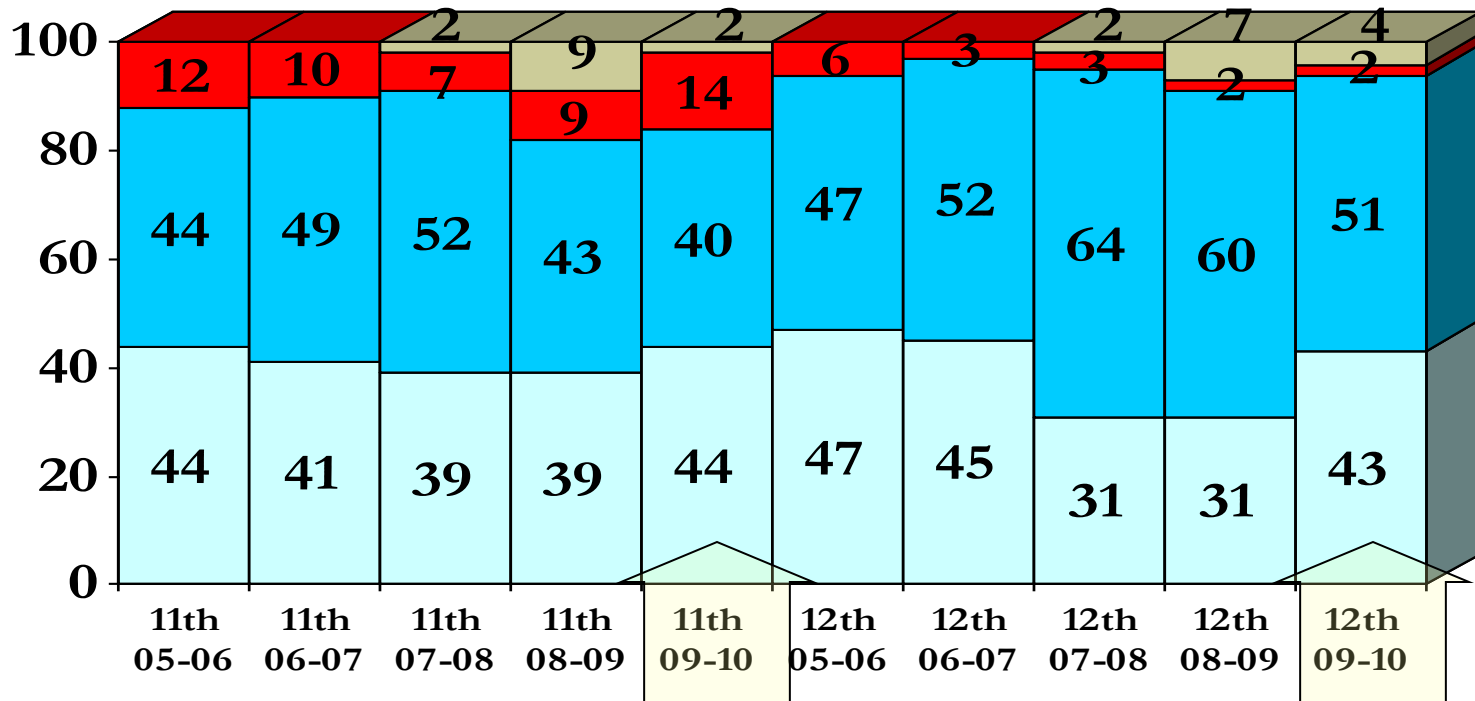
■ % Failing

■ % Incomplete

High School Social Studies Comparison 11th & 12th

Passing & Mastery

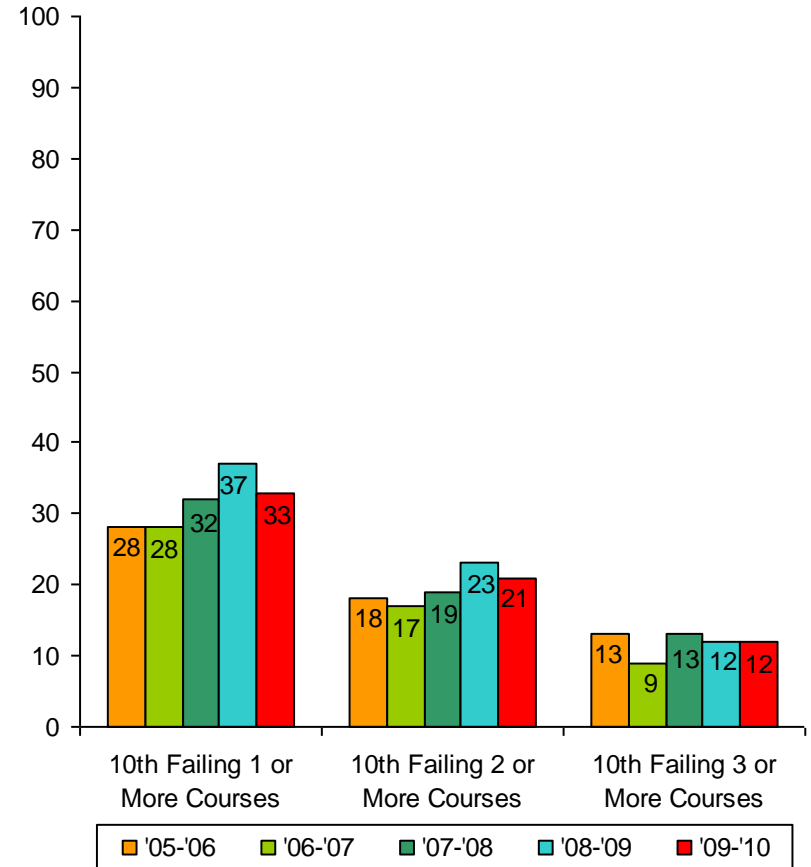
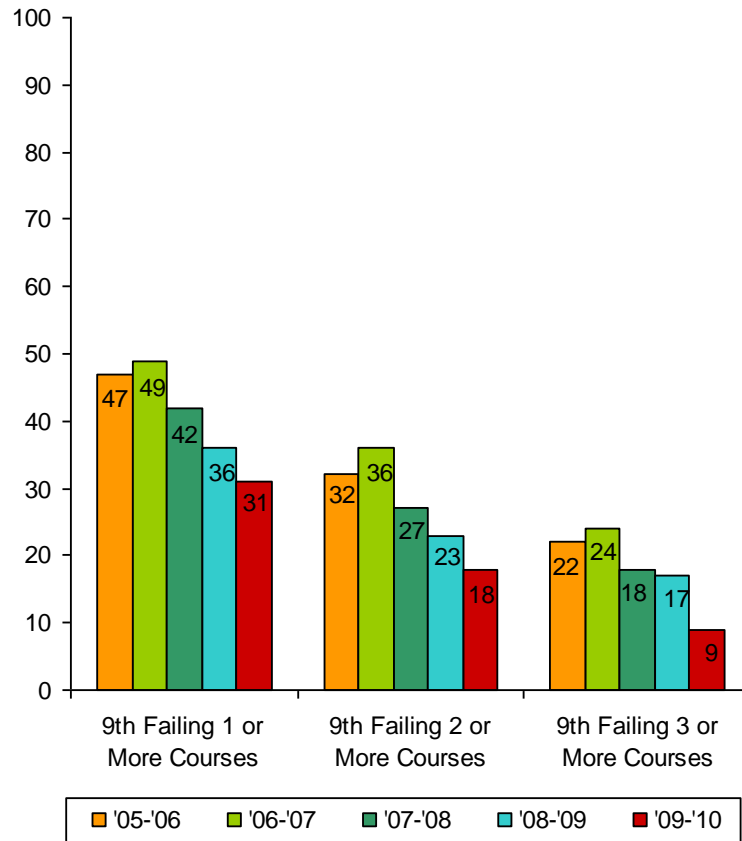
5-Year History - 2nd Quarter



High School Course Failure Comparison - 9th & 10th

% of Students Failing Courses

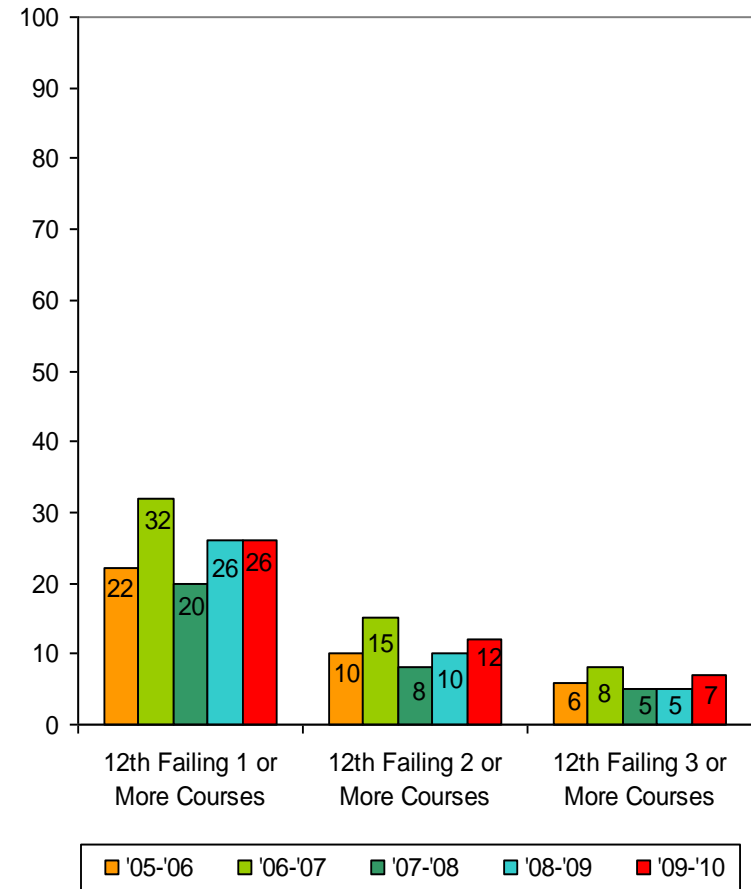
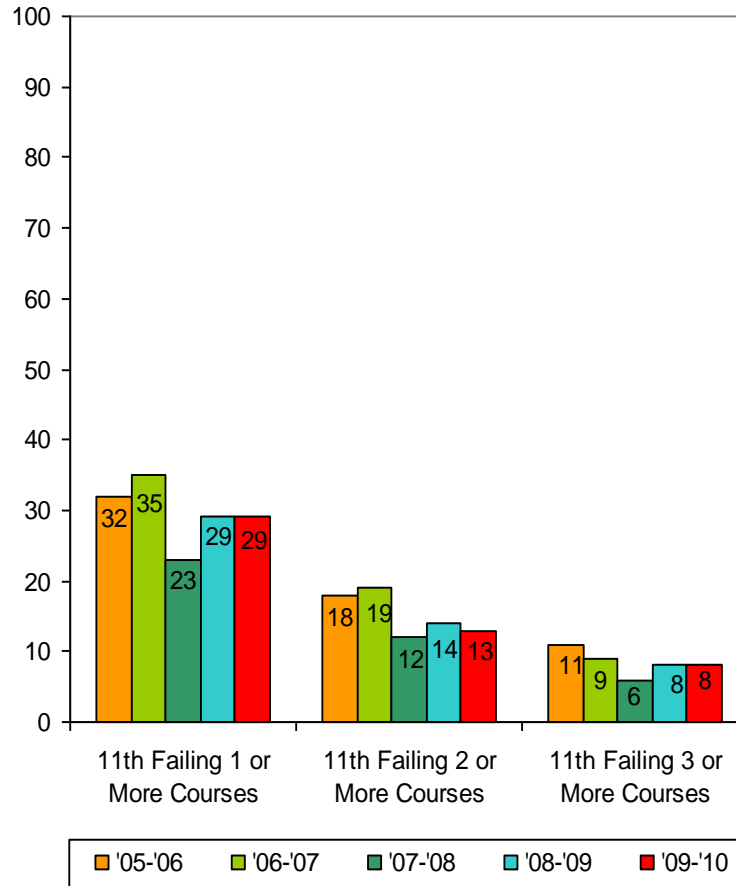
5-Year History - 2nd Quarter



High School Course Failure Comparison 11th & 12th

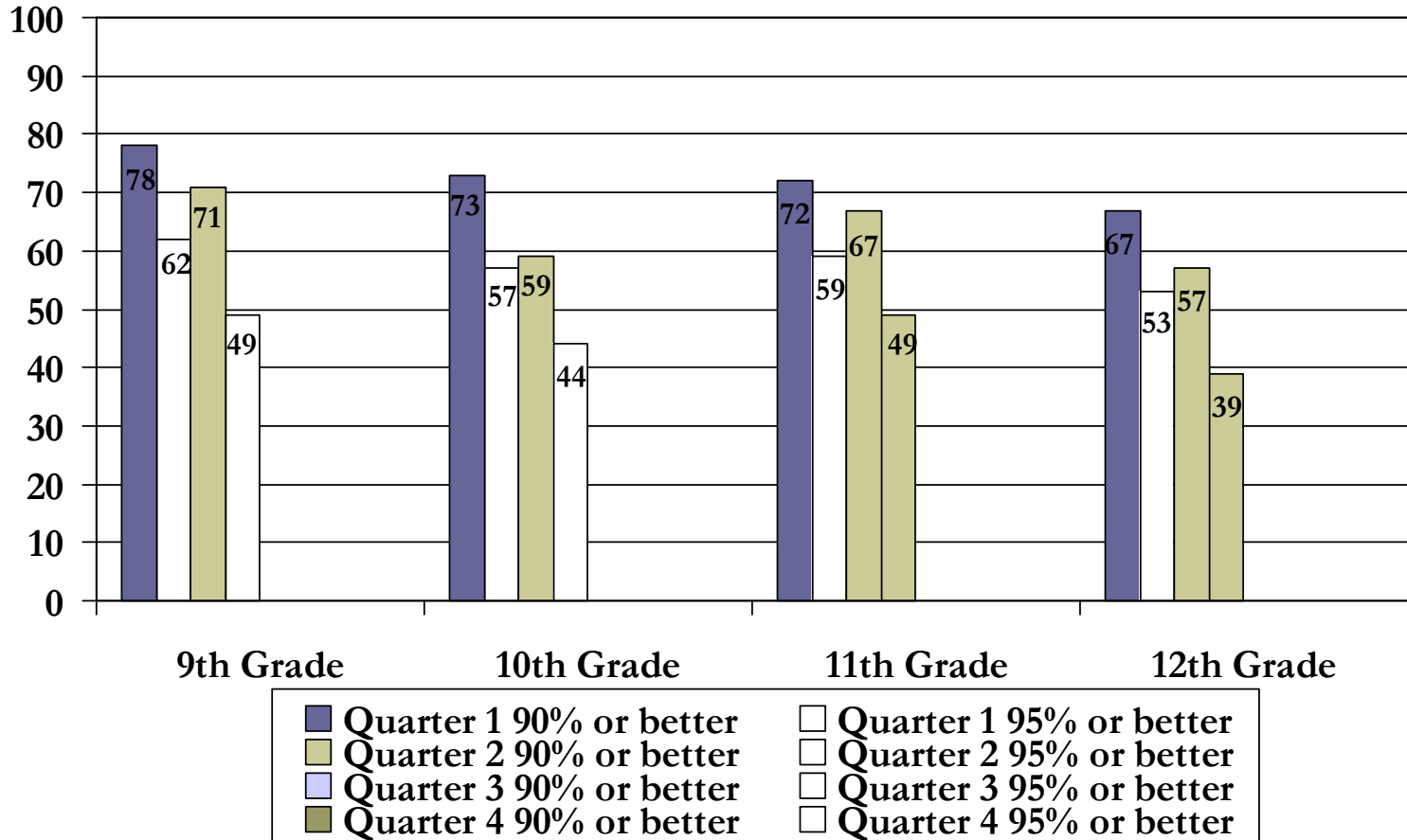
% of Students Failing Courses

5-Year History - 2nd Quarter



High School Attendance Comparison

Students with High Attendance Comparison – Quarters 1–4



Senior Class Eligible Diploma Types

2009-10

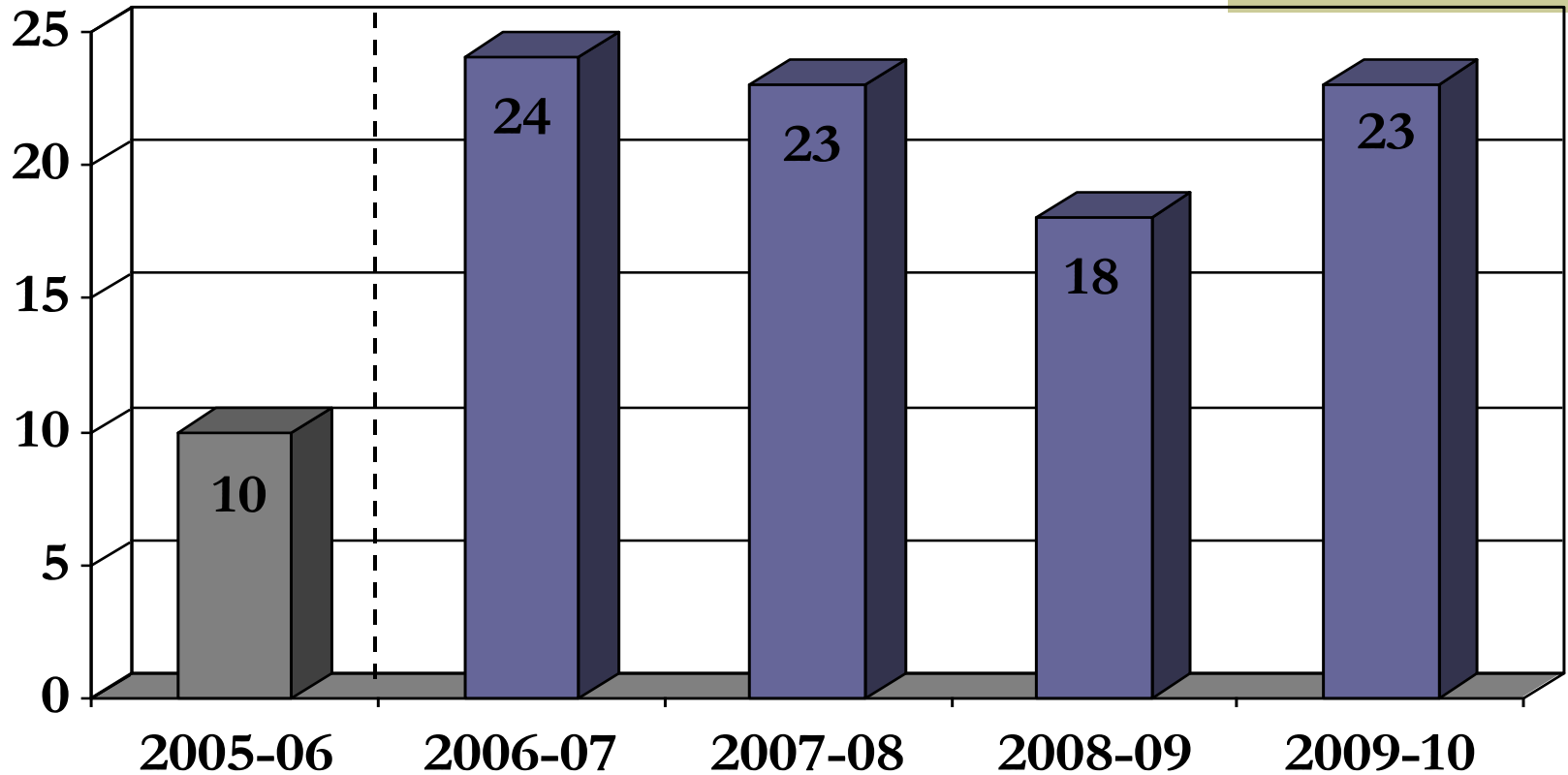
Eligible – 201

(Includes 2 Exchange Students)

| | |
|--|-------|
| Advanced Designation with Honors – 20 (10%) | } 82% |
| Advanced Designation – 69 (34%) | |
| Regents Diploma – 77 (38%) | |
| Local Diploma – 20 (10%) | |
| GED – 7 (4%) | |
| IEP Diploma – 6 (3%) | |
| Certificate of Attendance (Exchange Students) – 2 (1%) | |

High School Drop-out Comparison

of students dropping out by end of 2nd Quarter
5-Year History



High School Conclusions

2009-10 – 2nd Quarter

- Our failure rates are up and down—on balance, a little better
- We have 71% of all JSHS students passing all of their courses compared to 61% at this point in time last year
- Administrators and Department Leaders will be working especially hard with those students failing just one or two courses
- JSHS staff will be taking on a building-wide initiative to work on literacy skills with all students.